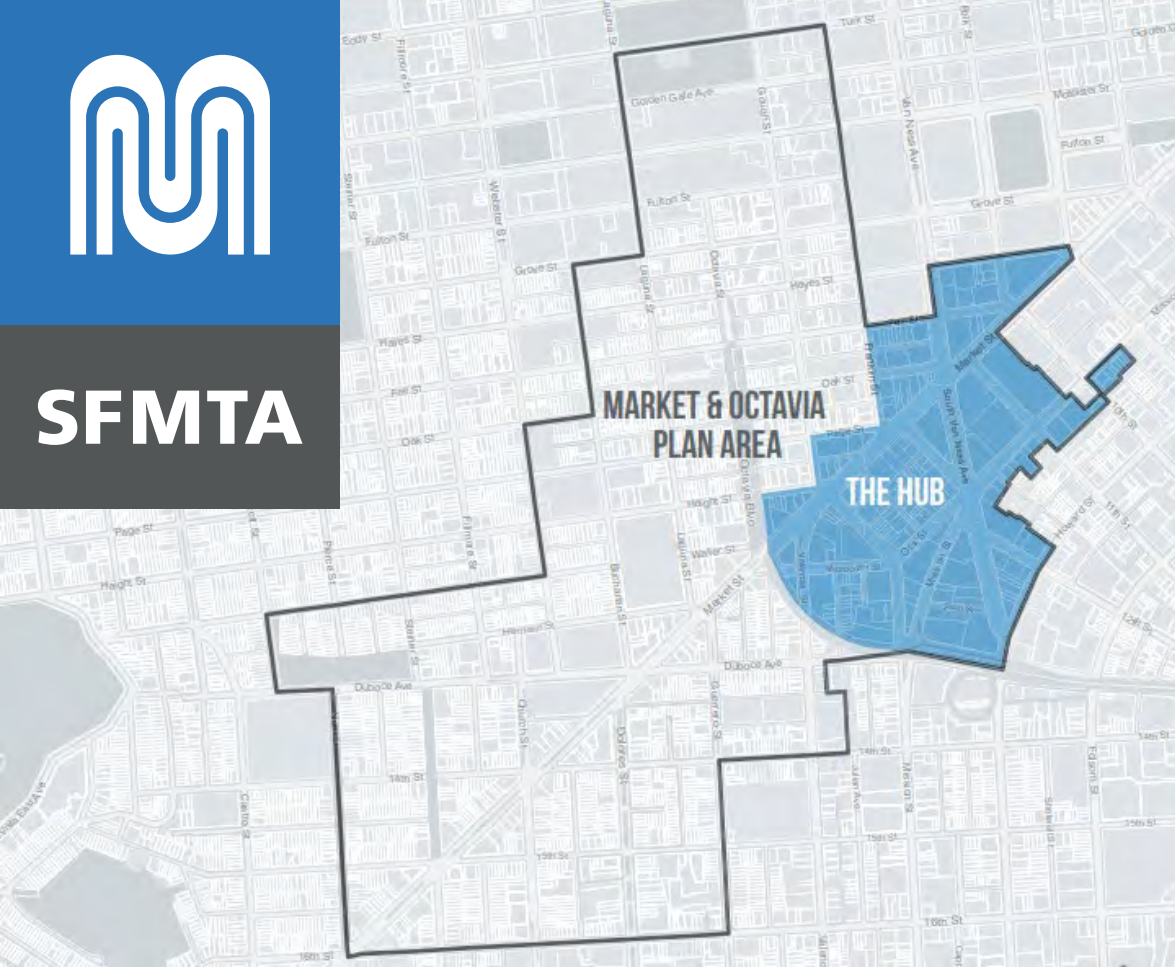




SFMTA

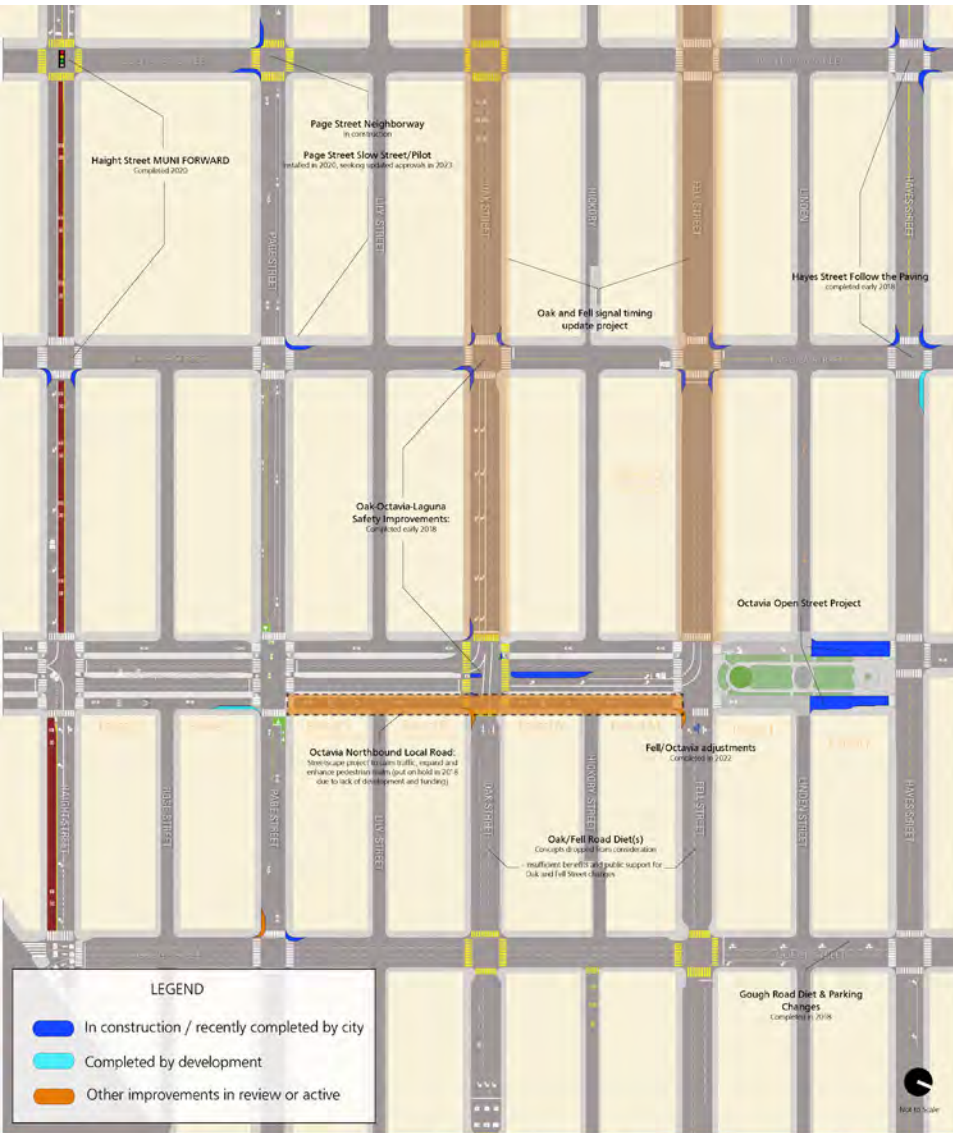


Market/Octavia Transportation Projects Update

Market/Octavia Community Advisory Committee (MOCAC)

March 2023

Market/Octavia



➤ Recently-Completed Projects:

- Comprehensive daylighting/crosswalks
- Oak/Octavia/Laguna Project (2018)
- Hayes Street Follow the Paving (2018)
- Octavia Open Street (2019)
- Haight Street Muni Forward (2020)
- Page Bikeway Pilot (2020)
- Fell/Octavia lane adjustments (2022)

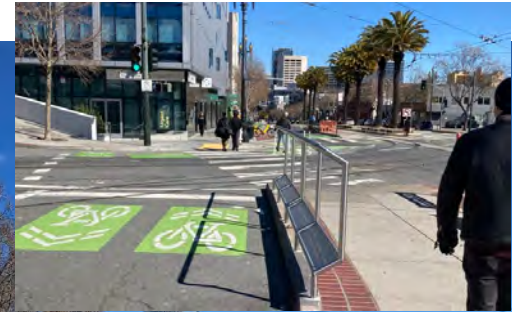
➤ Active Projects:

- **Upper Market Street**
- **Page Street Neighborway / Slow Street**
- **13th Street Protected Bike Lanes***
- **Oak/Fell signal timing***

* No major updates since Nov 2022

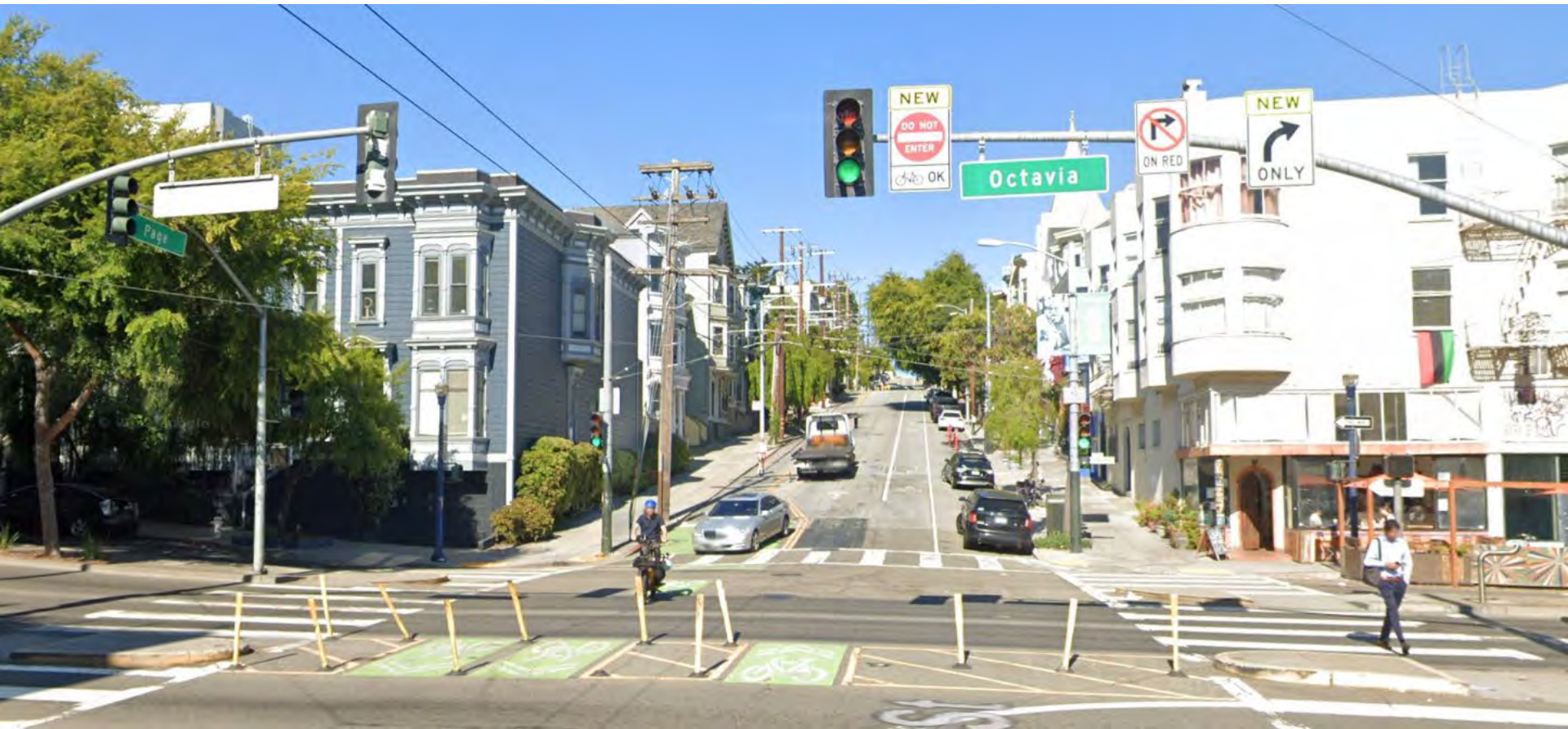
Upper Market Safety Project

- Substantially completed this past month
- Market-Octavia and final construction through April 2023
- Data collection and evaluation spring/summer 2023



Page Slow Street / Neighborway

- Adopted as a Slow Street in January 2023
- Neighborway construction progress after long delays
- Evaluation and outreach to inform future capital changes (Octavia to Stanyan)



Potential / Upcoming Projects



- **Oak/Fell bulbouts at Buchanan & Webster**
- **Octavia & Fell Intersection**
- **Octavia Blvd Enhancement (local lanes)**
- **Market & Gough**

Octavia Blvd Enhancement

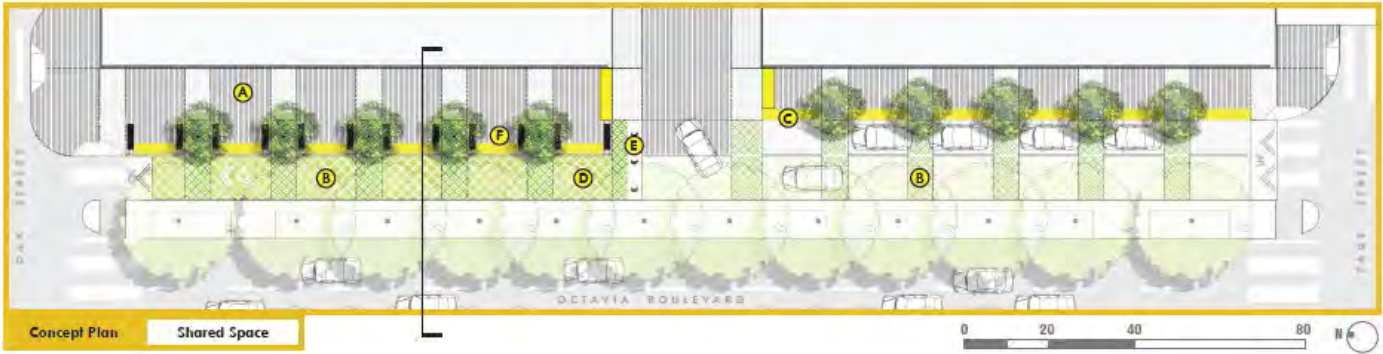
SHARED SPACE



DESIGN NARRATIVE

The Shared Space concept maximizes pedestrian space by utilizing temporary road closure barriers such as removable bollards to create an open street design that can be closed to vehicular traffic for special events throughout the year. In this schema, the northern half of the block could become a 40ft. wide social space that is literally an extension of the adjacent Patricia's Green park space. Permeable paving textures and curbless road profile creates a local feel while enhancing the public realm to create an exciting new shared streetscape for all to enjoy.

- A** **TEXTURE**
Incorporate a variety of textures on the permeable ground plane to create a pedestrian scale experience.
- B** **PERMEABLE PAVING**
Bergarten border presents an opportunity for informal seating.
- C** **CURBLESS**
A curbless shared space takes the roadway priority from the vehicle and incorporates more pedestrian use.
- D** **OPEN STREETS**
Street open public spaces that could be used for more than just a vehicular transportation network. Temporary street closures allows for park programming to continue beyond the park boundaries of Patricia's Green.
- E** **REMOVABLE BOLLARDS**
Street closures along local roadways could be made possible through the implementation of removable bollards or other temporary closure barrier elements.
- F** **EXTEND THE PARK**
The new landscape proposal area would expand upon the success of Patricia's Green by bringing more pedestrian space and successful park elements into the neighborhood.



Concept Plan Shared Space

