

## Active & Recent Projects

### SoMa & East Cut

#### Projects in Progress

- Gene Friend Rec Center

#### Projects in Planning

- Rachele Sullivan Park (11<sup>th</sup> & Natoma)

#### Acquisitions and Future Open Spaces

- 240 6<sup>th</sup> street: Gene Friend Rec Center Extension

#### Projects ON HOLD

- Pelican Park (Transbay Block 3)

#### Completed Projects

- Victoria Manalo Draves Park
- Guy Place Mini Park
- South Park



# *Projects in Progress*

---



# Gene Friend Recreation Center



## Improvements Include:

- Indoor space 1.5 x larger
- 2 indoor courts
- 2 multi-purpose rooms
- Larger exercise room
- All new playground, outdoor court & other amenities

Corner of Harriet and Folsom Streets



<b>Total Project Budget</b>	<b>\$59.3 million</b>
SoMa Development Fees, received	\$25 million
Other Development Fees, received	\$2.8 million
<i>Impact Fees, pending*</i>	<i>\$1 million</i>
2020 Health & Recovery Bond	\$30 million
TPL In-Kind Grant	\$0.5 million

\* 2020 Health and Recovery Bond Project Contingency as bridge funding

Planning  
Summer 2014

Design  
Spring 2022

Construction  
Spring 2024

Opening  
Fall 2026



PM: Melinda Sullivan  
melinda.sullivan@sfgov.org

Project website: [bit.ly/genefriendproject](https://bit.ly/genefriendproject)



# Gene Friend Recreation Center

**BEFORE**



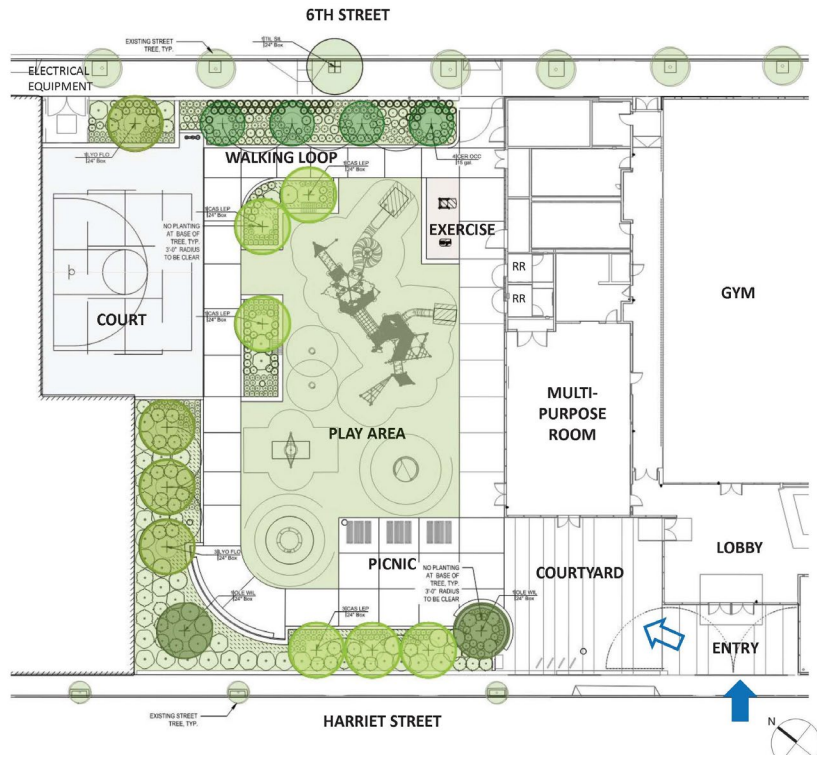
View from 6<sup>th</sup> street looking east

**AFTER**



Corner of Folsom and 6<sup>th</sup> streets

# Gene Friend Recreation Center



View of Playground with Gene Friend Rec Center in Background



PM: Melinda Sullivan  
melinda.sullivan@sfgov.org

Project website: [bit.ly/genefriendproject](http://bit.ly/genefriendproject)



# Gene Friend Recreation Center



Demolition of the old rec center, in progress (Spring 2024)



The graded lot that is soon to become the new Gene Friend Recreation Center South of Market (Sam Whiting/The Chronicle).



PM: Melinda Sullivan  
melinda.sullivan@sfgov.org

Project website: [bit.ly/genefriendproject](https://bit.ly/genefriendproject)





## Barrio Fiesta

-----  
**Cece Carpio**

**Art Proposal for the  
 Gene Friend Recreation Center**



Previous work sample and close-up painting style example  
 View of gym from 8<sup>th</sup> and Folsom Streets



View of gym from Harriet St

*Barrio Fiesta* translates to a neighborhood celebration bringing communities together where everyone is welcome as guests and active participants. San Francisco's SOMA district was one of my first stomping grounds after migrating to the United States at twelve years old. My experience of SOMA through the decades is remarkably similar to a *Barrio Fiesta*, allowing me to explore all aspects of convergence. Personally rooted in my culture and the Bay Area, I understand this design opportunity is part storytelling and part building décor- a signature amenity that puts Gene Friend Recreation Center and *Barrio Fiesta* on the map.

This design intertwines historical, present-day, and futuristic figures to capture the vision and spirit of the SOMA neighborhood. It includes everyday people enacting evolved traditions and cultural practices celebrating the vibrancy of the SOMA district. It weaves together recognizable faces- well-known individuals, suggested by Gene Friend stakeholders -along with representations of veterans, elders, youth, Indigenous migrants, community builders, and advocates to showcase the diversity and vitality of the SOMA community. Some of the portraits depicted will change based on interviews that will be conducted with SF SOMA Community members for a more in-depth community engagement process.

The artwork's background colors are inspired by pre-colonial textiles from various regions in the Philippines. Motif designs within the end pillars that are also integrated throughout the layout are rendered patterns found in textiles and wood carvings. Due to the architectural size and design of the building, this artwork design intends to fully utilize all available space for maximum impact and visibility. A rendered Gene Friend building is inserted in the background to reflect and converge the lively activities that happen inside and outside of the center.



Philippine textile inspirations



Contemporary Barrio Fiesta at SF SOMA district: Un(covered) SF

View of artwork on north-facing wall of gym



## Public Art Integration

- Barrio Fiesta by artist Cece Carpio for large gymnasium
- Currently working with community to refine concept design and finalize later this year
- Selection process for hallway art to commence Fall 2024
- For questions and to provide input, please contact Arts Commission Project Manager, Arianne Gelardin: [Arianne.Gelardin@sfgov.org](mailto:Arianne.Gelardin@sfgov.org)





# *Projects in Planning*

---



# Rachele Sullivan Park (11<sup>th</sup> & Natoma Park)



Rent Revenue	\$1.18 million
IPIC, received	\$1.51 million
IPIC, pending	\$10.1 million



PM: Alex Schuknecht  
alex.schuknecht@sfgov.org

Project Website: <https://sfrecpark.org/1635/Rachele-Sullivan-Park-Project>



# Rachele Sullivan Park (11<sup>th</sup> & Natoma Park)

## SITE PLAN

### ACTIVE

Spaces that support physical health and wellness activate the park entrance and provide a buffer against busy 11th Street.

- (a) Half basketball court (supports multiple uses)
- (b) Adult fitness area

### GARDEN

Situated in the prime sun zone of the site, lush planting beds and winding paths frame and connect a variety of intimate spaces with individual and social seating.

- (c) Garden planting
- (d) Group seating areas
- (e) Quiet individual seating areas
- (f) Garden shade structure

### PLAY

A nature exploration area links the school-age children's play area with the surrounding park plantings

- (g) School-age childrens' play area
- (h) All-ages nature exploration area

### OTHER ELEMENTS

- (i) Dog relief area
- (j) Recreation & Parks Dept Maintenance Shed
- (k) Community plaza
- (l) Terraced seating

### GATES & FENCING

- 11' tall art fence + 10' wide entry gate
- 8' tall park fence + RPD maintenance gates
- 8' louvered screening fence



## CALL FOR ARTISTS!

### 11TH AND NATOMA PARK PROJECT ARTIST-DESIGNED PERIMETER FENCE PANELS RFO

DEADLINE TO SUBMIT QUALIFICATIONS:  
MAY 1, 2024 BY 11:59 PM



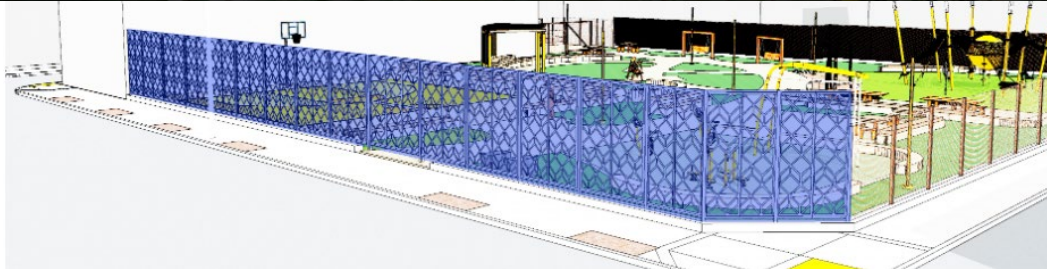
## INFO/RESOURCES

• [BIT.LY/11THNATOMARFQ2024](https://bit.ly/11thNatomaRfQ2024)

- THE SAN FRANCISCO ARTS COMMISSION INVITES ARTISTS AND ARTIST TEAMS RESIDING IN THE UNITED STATES TO SUBMIT QUALIFICATIONS FOR ARTIST-DESIGNED FENCE PANELS AS PART OF THE 11TH AND NATOMA PARK PROJECT.
- SAN FRANCISCO RECREATION AND PARKS PLANS TO INSTALL A POWDER-COATED ALUMINUM PERIMETER FENCE AND ENTRY GATE ALONG 11TH STREET, WHICH PROVIDES AN OPPORTUNITY FOR THE INTEGRATION OF A PERMANENT PUBLIC ARTWORK
- THE BUDGET FOR ARTWORK IS \$25,000, INCLUSIVE OF ALL ARTIST'S FEES, AS WELL AS ASSOCIATED EXPENSES FOR DESIGN AND CONSULTATION DURING FABRICATION AND INSTALLATION.
  - ARTIST CONTRACT BUDGET DOES NOT INCLUDE COSTS ASSOCIATED WITH TRAVEL.



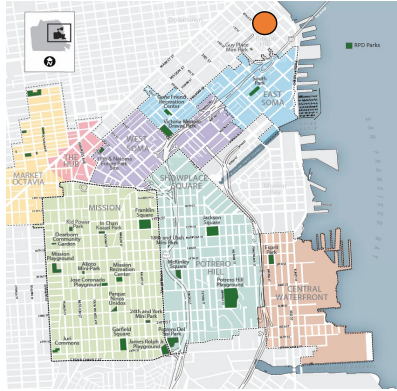
SCAN QR CODE OR VISIT [BIT.LY/SFACRFQ](https://bit.ly/sfacrfq)  
TO LEARN MORE AND APPLY



# *Projects ON HOLD*

---





## Improvements Include

- Stewardship building
  - Restroom
  - Community and RPD storage spaces
- Children’s Play Area with picnic tables
- Nature Exploration Area
- Two decks with seating and a large plaza with flexible seating
- Dog relief area
- Meadow planting area and tree grove areas
- Public Art

**Construction Budget  
(estimate)**

**\$21 million**



Planning  
Aug 2020

Design  
In Process

Bid/Award  
TBD

Construction  
TBD

Opening  
TBD



PM: Monica Scott  
monica.scott@sfgov.org

Project website: <https://sfrecpark.org/1562/Transbay-Block-3-Park>



# *Acquisitions & Future Open Spaces*

---



# 240 6<sup>th</sup> St. Potential Acquisition



## Open Space

- RPD properties
- Other Public Open Spaces

## Acquisition Property

- 240 6<sup>th</sup> St





## 240 6<sup>th</sup> St. Potential Acquisition



View from 6th Street (above) and view from Harriet Street (below)



- Adjacent to Gene Friend Rec Center
- Two-story commercial building
- 9,625 square feet (0.22 acres)
- First floor: vacant
- Existing tenant on second floor (automotive shop)

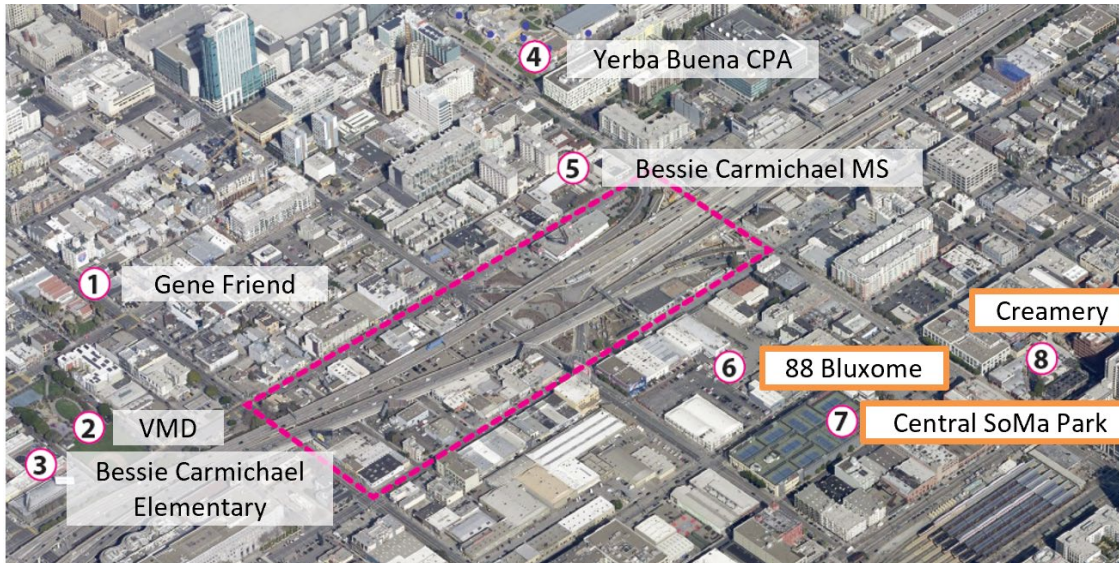


# Potential Future Open Spaces in SoMa



## 88 Bluxome – Gene Friend Annex Pool

Developer-funded community center & underground pool



## AB 857 Under Freeway Parcels

~10 acres of Caltrans-owned land under SoMa freeways

# *Completed Projects*

---

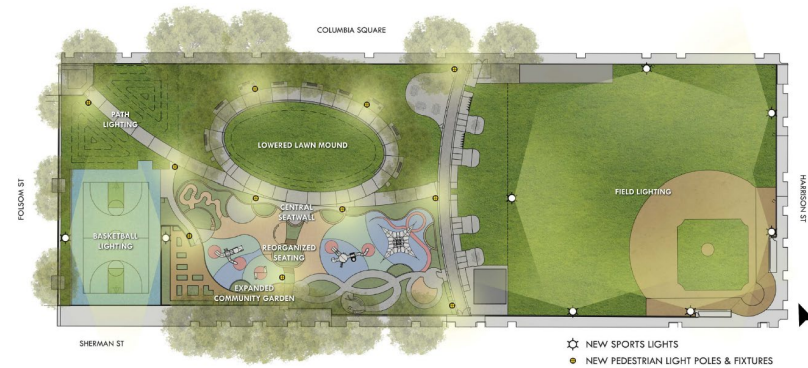


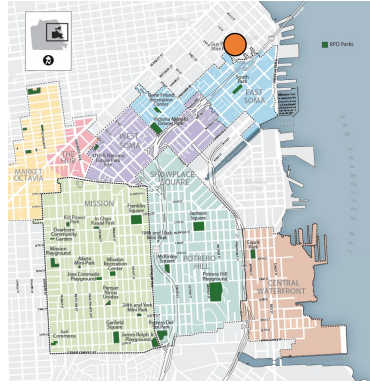


### Improvements Included:

- Sports lighting added at ballfield & court; upgraded pathway lighting
- Additional seating and improved circulation at the playground
- Expansion of the community garden with added planters
- Access upgrades throughout
- Security cameras added

Total Project Budget	\$2.6 million
POPOS In-lieu Fees (Intercontinental Hotel)	\$2.6 million





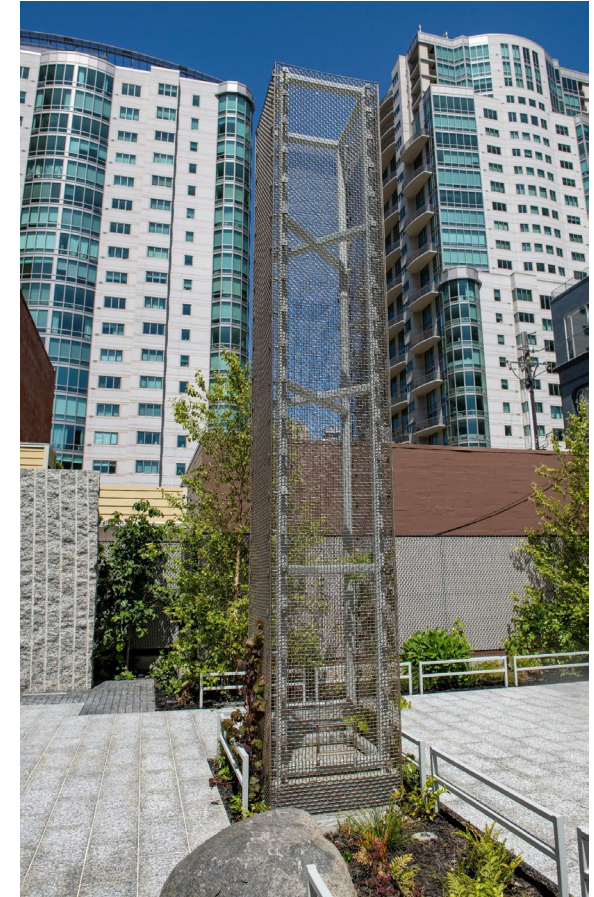
### Improvements Included:

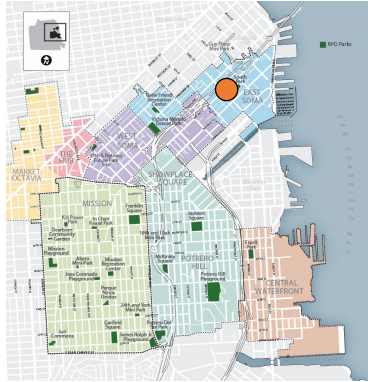
- 3 outdoor “rooms”
- Artist-designed fence
- Pet fountain and permeable dog relief area

Total Project Budget	\$5.3 million
Impact Fees	\$5.24 million
Addback	\$0.06 million



Original Conditions





<b>Total Project Budget</b>	<b>\$4 million</b>
<b>Impact Fees</b>	<b>\$1.5 million</b>





# Thank You

