

San Francisco Recreation & Parks Department

SOMA CAC

RPD Update

October 24, 2023



Inspire, Connect, Play!

Active & Recent Projects

SoMa & East Cut

Projects in Progress

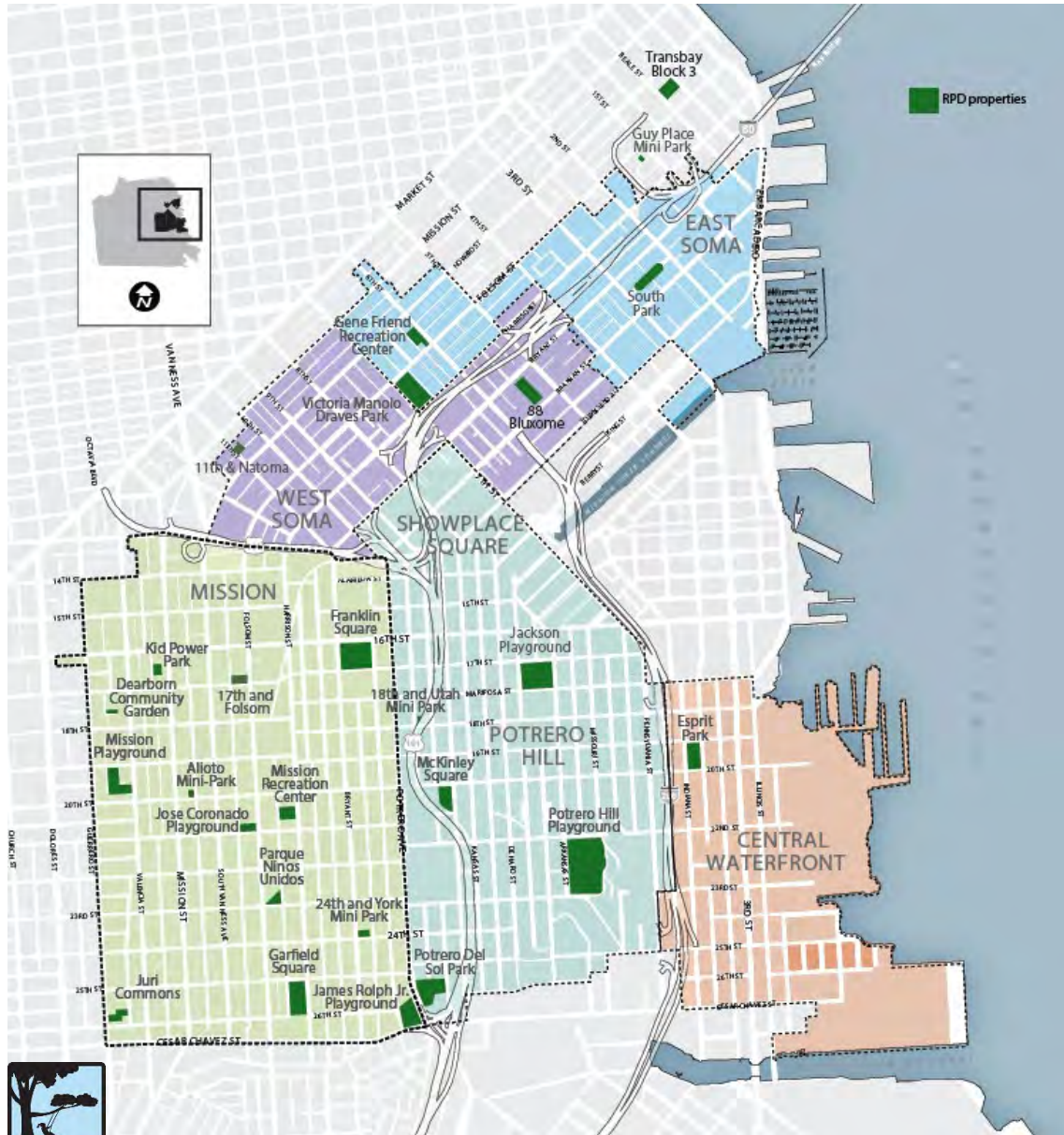
- Gene Friend Rec Center
- Pelican Park (Transbay Block 3)

Projects in Planning

- 11th & Natoma
- Potential New Open Spaces

Completed Projects

- Victoria Manalo Draves Park
- Guy Place Mini Park
- South Park



Projects in Progress



Gene Friend Recreation Center

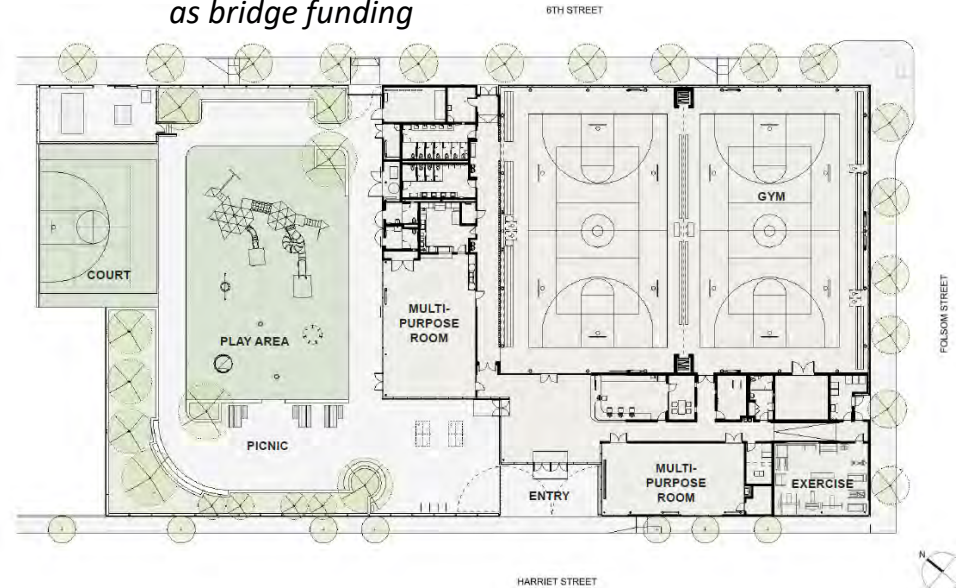


Improvements Include:

- Indoor space 1.5 x larger
- 2 indoor courts
- 2 multi-purpose rooms
- Larger exercise room
- All new playground, outdoor court & other amenities

Total Project Budget	\$59.3 million
Development Fees, received	\$24.8 million
<i>Impact Fees, pending*</i>	<i>\$4 million</i>
2020 Health & Recovery Bond	\$30 million
TPL In-Kind Grant	\$0.5 million

** 2020 Health and Recovery Bond Project Contingency as bridge funding*



Planning
August 2014

Design
Spring 2022

Construction
Early 2024

Opening
Early 2026



PM: Melinda Sullivan
melinda.sullivan@sfgov.org

Project website: <https://sfrecpark.org/1143/Gene-Friend-Recreation-Center>



Gene Friend Recreation Center

BEFORE



AFTER



Pelican Park (Transbay Block 3 Park)



Improvements Include

- Stewardship building
 - Restroom
 - Community and RPD storage spaces
- Children’s Play Area with picnic tables
- Nature Exploration Area
- Two decks with seating and a large plaza with flexible seating
- Dog relief area
- Meadow planting area and tree grove areas
- Public Art

Construction Budget (estimate)	\$21 million
---------------------------------------	---------------------



PM: Monica Scott
monica.scott@sfgov.org

Project website: <https://sfrecpark.org/1562/Transbay-Block-3-Park>



Pelican Park (Transbay Block 3 Park)



Bird's Eye View Looking Northeast Towards Main St



View from Upper Deck



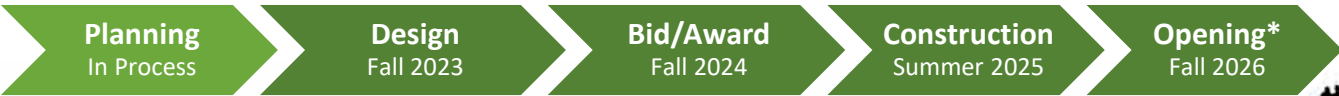
Projects in Planning



11th & Natoma Park Development



General Fund	\$0.97 million
IPIC, received	\$4.5 million
IPIC, pending	\$7.1 million



PM: Alex Schuknecht
alex.schuknecht@sfgov.org

Project Website: <https://sfrecpark.org/1635/11th-Natoma-Park-Project>

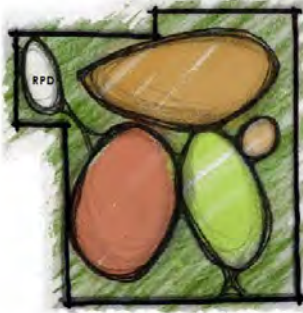


11th & Natoma Park Development

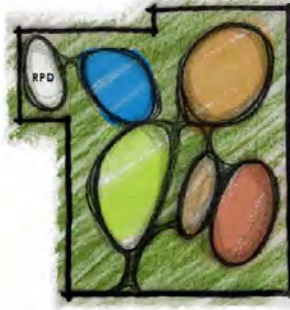
CONCEPT DIAGRAMS

Most Second Choice Votes

Most First Choice Votes



THE PLAZA



THE COMMONS



THE GARDEN

THE PLAZA

THE COMMONS

THE GARDEN



Planning
In Process

Design
Fall 2023

Bid/Award
Fall 2024

Construction
Summer 2025

Opening*
Fall 2026

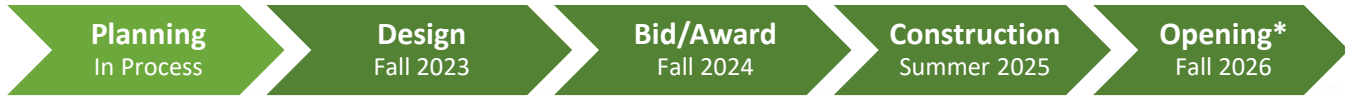
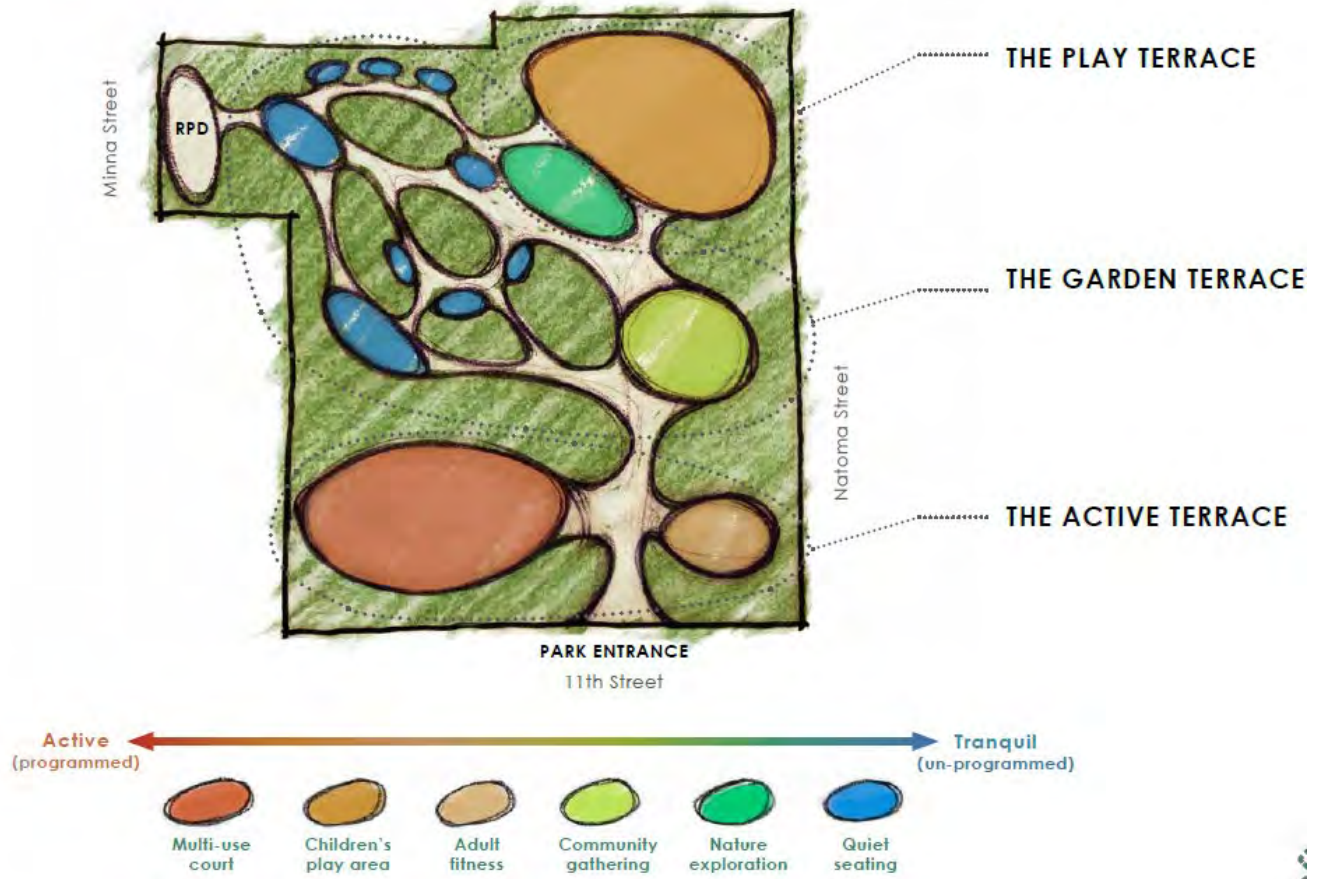


PM: Alex Schuknecht
alex.schuknecht@sfgov.org

Project Website: <https://sfrecpark.org/1635/11th-Natoma-Park-Project>



SYNTHESIZED CONCEPT: THE TERRACES



POTENTIAL FUTURE OPEN SPACES IN SOMA



1133 Mission/633 Minna Potential Acquisition
2 sites, currently used as a parking lot, 8k sqft



240 6th Street Potential Acquisition
Commercial building adjacent to Gene Friend, 9,6k sqft



88 Bluxome – Gene Friend Annex Pool
Developer-funded community center & underground pool



AB 857 Under Freeway Parcels
~10 acres of Caltrans-owned land under SoMa freeways

Completed Projects





Improvements Included:

- Sports lighting added at ballfield & court; upgraded pathway lighting
- Additional seating and improved circulation at the playground
- Expansion of the community garden with added planters
- Access upgrades throughout
- Security cameras added

Total Project Budget

\$2.6 million

POPOS In-lieu Fees
(Intercontinental Hotel)

\$2.6 million



★ NEW SPORTS LIGHTS
● NEW PEDESTRIAN LIGHT POLES & FIXTURES





Improvements Included:

- 3 outdoor “rooms”
- Artist-designed fence
- Pet fountain and permeable dog relief area

Total Project Budget	\$5.3 million
Impact Fees	\$5.24 million
Addback	\$0.06 million



Original Conditions





Total Project Budget	\$4 million
Impact Fees	\$1.5 million





Thank You

