

San Francisco Recreation & Parks Department

# SoMa CAC

RPD Update

*September 13, 2022*



Inspire, Connect, Play!

## Active & Recent Projects

### SoMa & East Cut

#### *Open to the Public*

- Victoria Manalo Draves Park

#### *Projects in Progress*

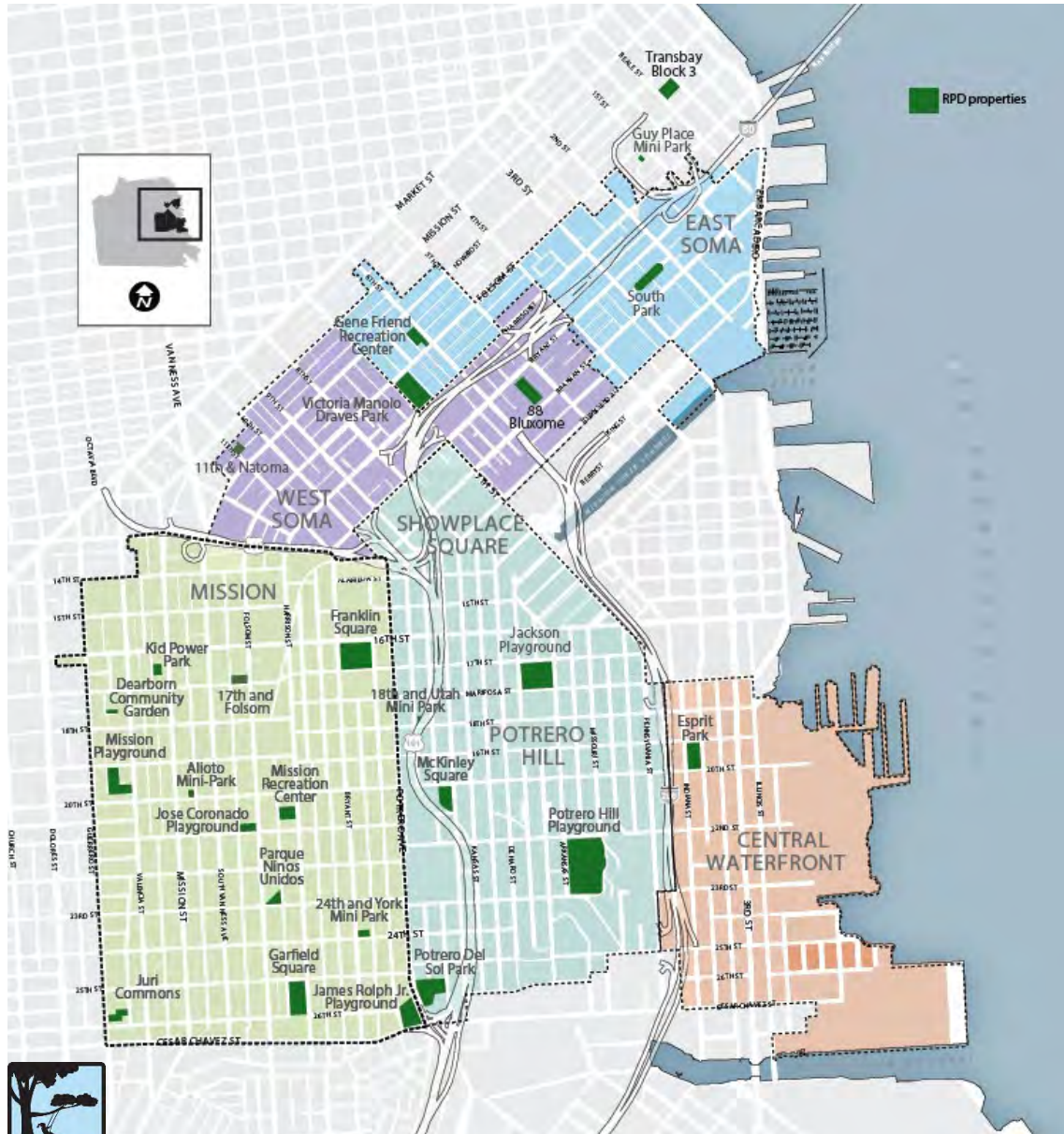
- Gene Friend Rec Center
- Transbay Parcel 3

#### *Planning Efforts*

- 11th & Natoma
- 88 Bluxome
- 1133 Mission/633 Minna
- Acquisition Analysis
- Under-freeway Parcels

#### *Completed Projects*

- Guy Place Mini Park
- South Park



# *Open to the Public*

---





**Improvements Include:**

- Sports lighting added at ballfield & court; upgraded pathway lighting
- Additional seating and improved circulation at the playground
- Expansion of the community garden with added planters
- Access upgrades throughout
- Security cameras added

<b>Total Project Budget</b>	<b>\$2,600,000</b>
POPOS In-lieu Fees (Intercontinental Hotel)	\$2,600,000



# *Projects in Progress*

---





## Improvements Include:

- Indoor space 1.5 x larger
- 2 indoor courts
- 2 multi-purpose rooms
- Larger exercise room
- All new playground, outdoor court & other amenities

<b>Total Project Budget</b>	<b>\$59,320,800</b>
Impact Fees, received	\$3,650,300
<i>Impact Fees, pending</i>	<i>\$25,150,000</i>
2020 Health & Recovery Bond	\$30,000,000
TPL In-Kind Grant	\$520,500



Planning  
August 2014

Design  
Spring 2022

Construction  
Summer 2023

Opening  
Summer 2025



**BEFORE**



**AFTER**

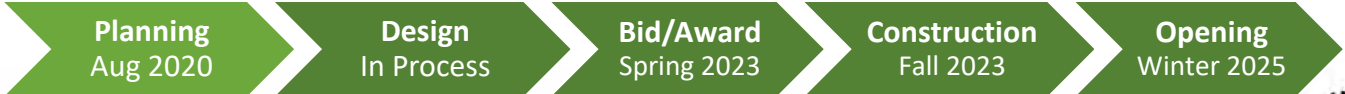




## Improvements Include

- Stewardship building
  - Restroom
  - Community and RPD storage spaces
- Children’s Play Area with picnic tables
- Nature Exploration Area
- Two decks with seating and a large plaza
- Dog relief area
- Meadow planting area and tree grove areas
- Public Art

<b>Construction Budget (estimate)</b>	<b>\$21,000,000</b>
---------------------------------------	---------------------







**Bird's Eye View Looking Northeast Towards Main St**



**View from Upper Deck**



# *Planning Efforts*

---



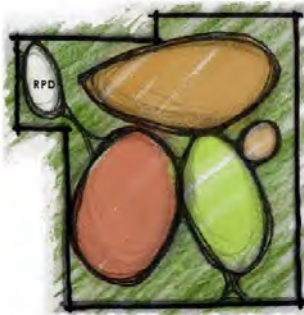


Open Space Acquisition Fund	\$275,000
Impact Fees (EN & MO)	\$11,800,000

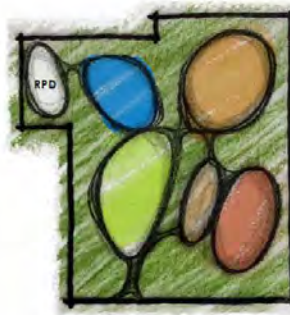


draft

## CONCEPT DIAGRAMS



THE PLAZA



THE COMMONS



THE GARDEN

## THE PLAZA



## THE COMMONS



## THE GARDEN



Planning  
In Process

Design  
TBD

Bid/Award  
TBD

Construction  
TBD

Opening  
TBD





## Improvements likely to include:

- **Development currently on-hold**
- New facility to be constructed by developer and dedicated to RPD upon completion
- First floor community center
- Underground pool, including a children and senior pool and a 6-lane pool



Planning  
Aug 2020

Design  
In Process

Approvals  
TBD

Construction  
TBD

Opening  
TBD



# 1133 Mission/633 Minna Potential Acquisition



- Two sites: 0.14-acre (6,150 sf) parcel on Mission St. and 0.04-acre (1,875 sf) parcel on Minna St between 7<sup>th</sup> & 8<sup>th</sup> streets
- Currently used as a parking lot
- Accessible from Mission St. (northeast) and Minna St. on (southeast) and bounded by buildings on two sides
- Suitable for both passive and active recreation uses
- Staff currently exploring the site



Planning  
In Process

Design  
TBD

Bid/Award  
TBD





Construction  
TBD

Opening  
TBD

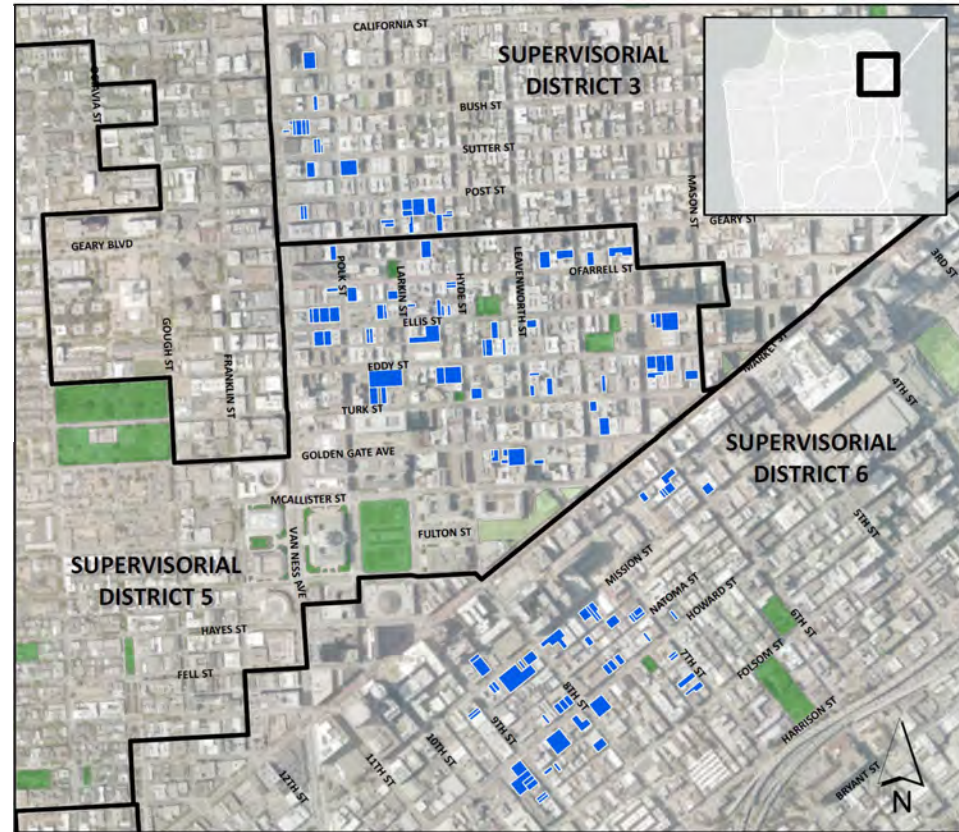


# Acquisition Analysis



-  Potential Sites
-  RPD Parks
-  Non RPD Parks
-  Supervisorial District Boundary

- RPD staff have been working with community members and SF RED to identify our next acquisition opportunity in the TL/Lower Polk/SOMA area
- Like the D6 effort in 2014, we have contracted a broker to prepare a list of properties for consideration
- 120 properties are under review & analysis to identify most desirable properties



Planning  
In Process

Design  
TBD

Bid/Award  
TBD

Construction  
TBD

Opening  
TBD



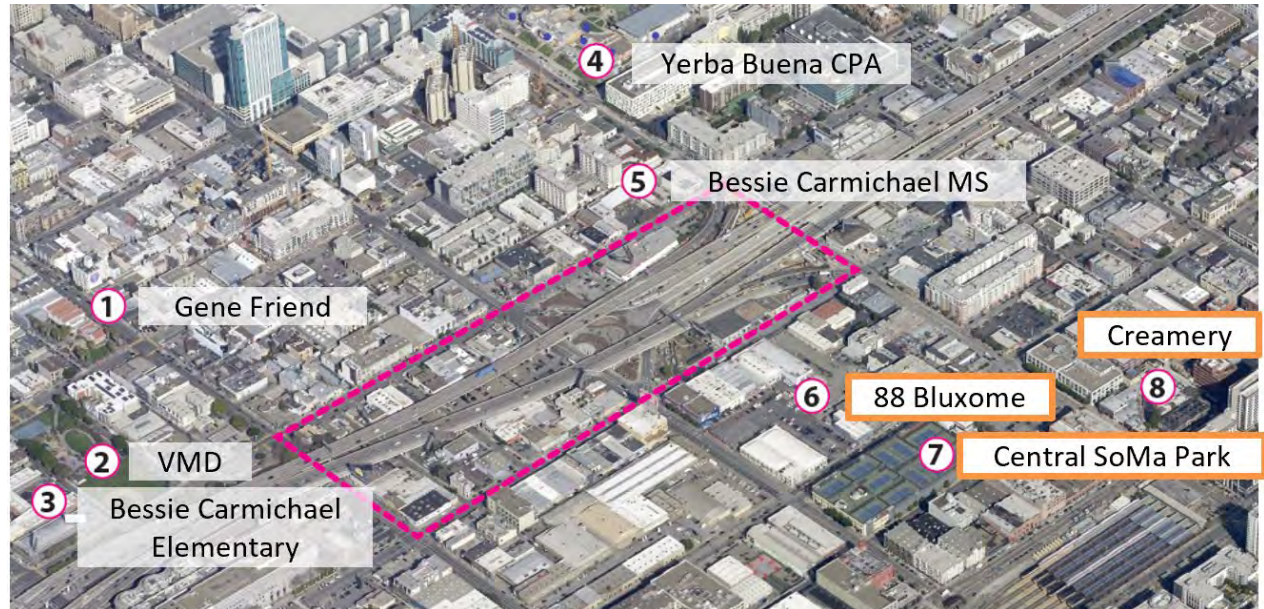
# AB 857 Under Freeway Parcels



- ~10 acres of Caltrans-owned under-freeway land available in central SoMa through AB 857
- Near-term potential for ~5 acres between 4th and 5th streets
- RPD + Planning + SFE working to develop potential projects and identify funding
- Open Space Vision Plan by Harvard Summer Fellow

## Potential improvements on these parcels may include:

- Large dog run
- Bike/skate park
- Pollinator garden/native tree nursery
- Environmental initiatives
- Spillover uses for Gene Friend during construction



Planning  
August 2020

Design  
TBD

Bid/Award  
TBD

Construction  
TBD

Opening  
TBD





# *Completed Projects*

---





## Improvements Include:

- 3 outdoor “rooms”
- Artist-designed fence
- Pet fountain and permeable dog relief area

Total Project Budget	\$5,300,000
Impact Fees	\$5,240,000
Addback	\$60,000



Original Conditions





**Total Project Budget**

**\$4,010,000**

**Impact Fees**

**\$1,500,000**





# Thank You

