



ENVIRONMENTAL JUSTICE FRAMEWORK & GENERAL PLAN POLICIES

OVERVIEW | JANUARY 2020

Source: SF Conservation Corps & Literacy for Environmental Justice (February 2018)



LAND ACKNOWLEDGMENT

*We acknowledge that we are on the unceded ancestral homeland of the **Ramaytush Ohlone** who are the original inhabitants of the San Francisco Peninsula.*

ABOUT US: EJ FRAMEWORK TEAM



Lisa Chen

EJ Framework
Project Manager



**Shelley
Caltagirone**

Cultural Heritage
Planner



Celina Chan

Transportation
Planner



Claudia Flores

Racial & Social
Equity Plan
Manager



Danielle Ngo

Resilience &
Sustainability
Planner



Jacob Wallace

Public Service
Trainee

WHAT IS ENVIRONMENTAL JUSTICE? (US EPA Definition)

*“The **fair treatment and meaningful involvement** of all people regardless of **race, color, national origin, or income** with respect to the development, implementation, and enforcement of **environmental laws, regulations, and policies.**”*

WHAT IS ENVIRONMENTAL JUSTICE? (Our working definition)



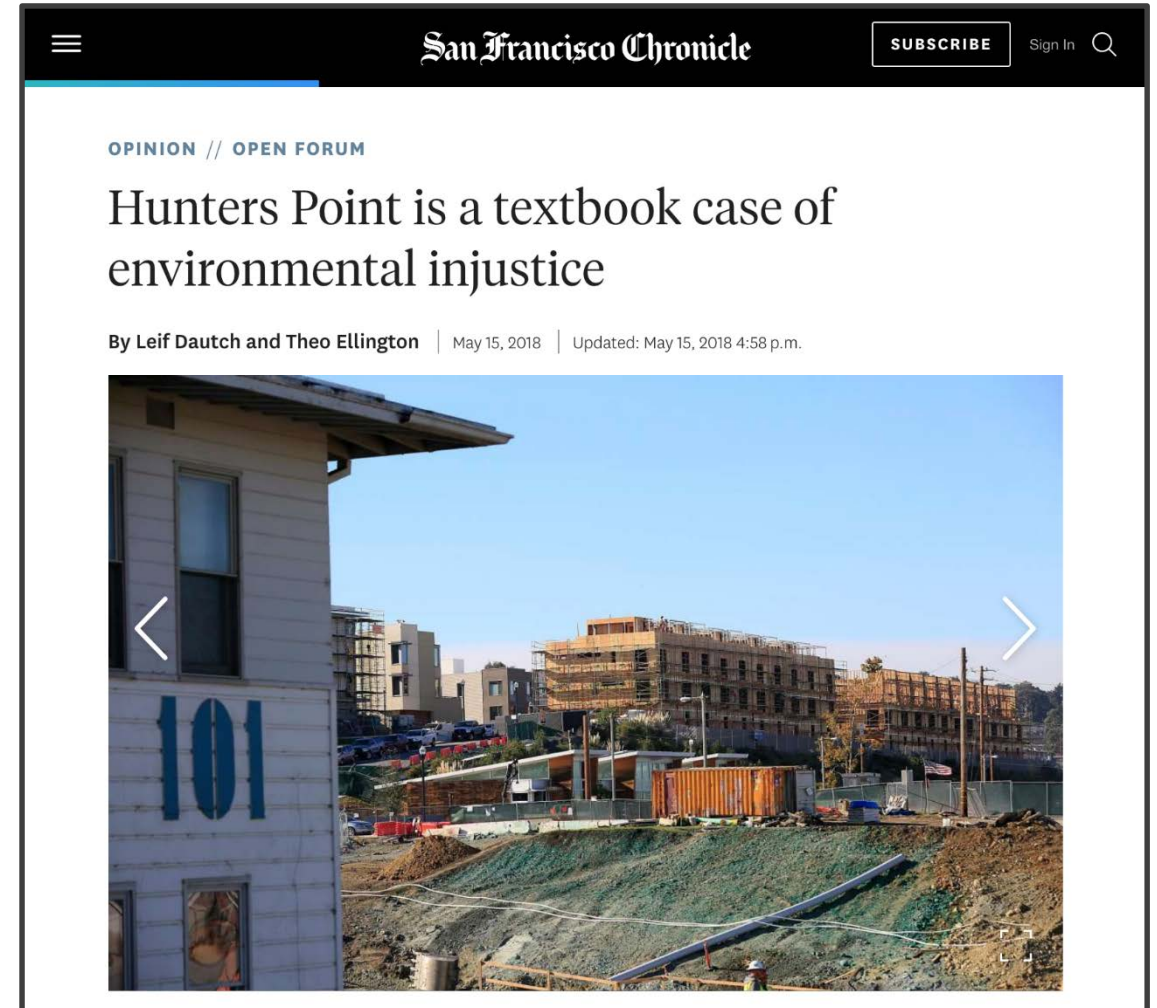
See also: [EJ Principles](#) from the First National People of Color Environmental Leadership Summit in 1991

Environmental justice is the **equitable distribution of environmental benefits and burdens** to promote **healthy communities** where all San Franciscans can thrive.

Government can foster environmental justice through processes that **amend past injustices while creating proactive, community-led solutions for the future.**

WHAT IS ENVIRONMENTAL RACISM?

Environmental racism recognizes that Black, Indigenous, and People of Color communities have **borne the brunt of environmental hazards** and have been **denied access to communities of opportunity** through intentional and systemically racist policies and actions.

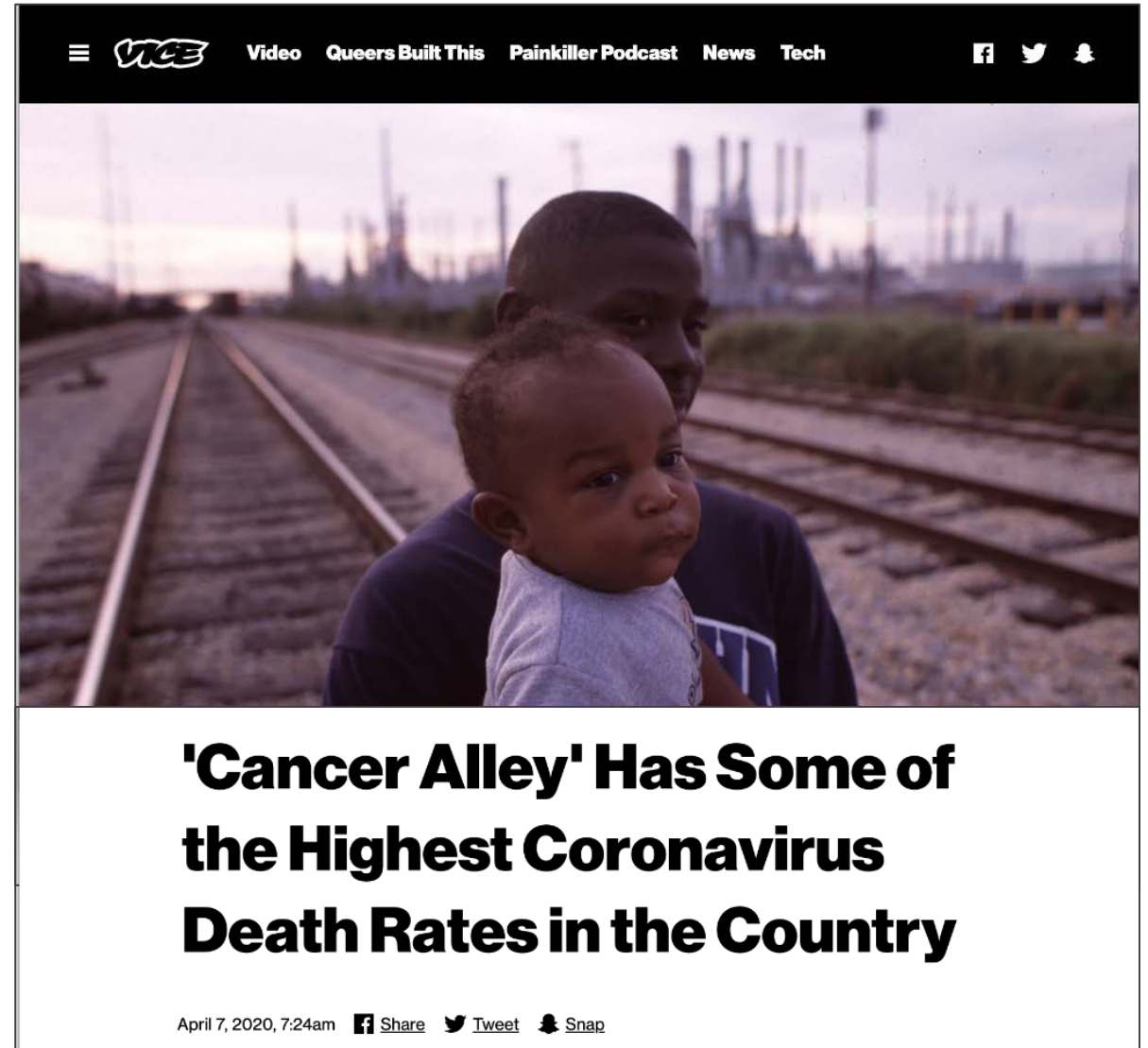


Source: SF Chronicle

WHY IS ENVIRONMENTAL JUSTICE ESPECIALLY IMPORTANT NOW?

“One thing that COVID-19 has done, it has made a lot of populations we made invisible, visible. Nursing home populations. The meatpacking industry. Prisons. Communities impacted by environmental injustice. These are communities that we’ve thrown away.”

-- Dr. Sacoby Wilson, Univ. of Maryland



Source: Vice

WHY IS ENVIRONMENTAL JUSTICE ESPECIALLY IMPORTANT NOW?



Source: Peoplesclimate.org

Environmental Justice Framework

WHY ARE WE PLANNING FOR ENVIRONMENTAL JUSTICE? WHY NOW?



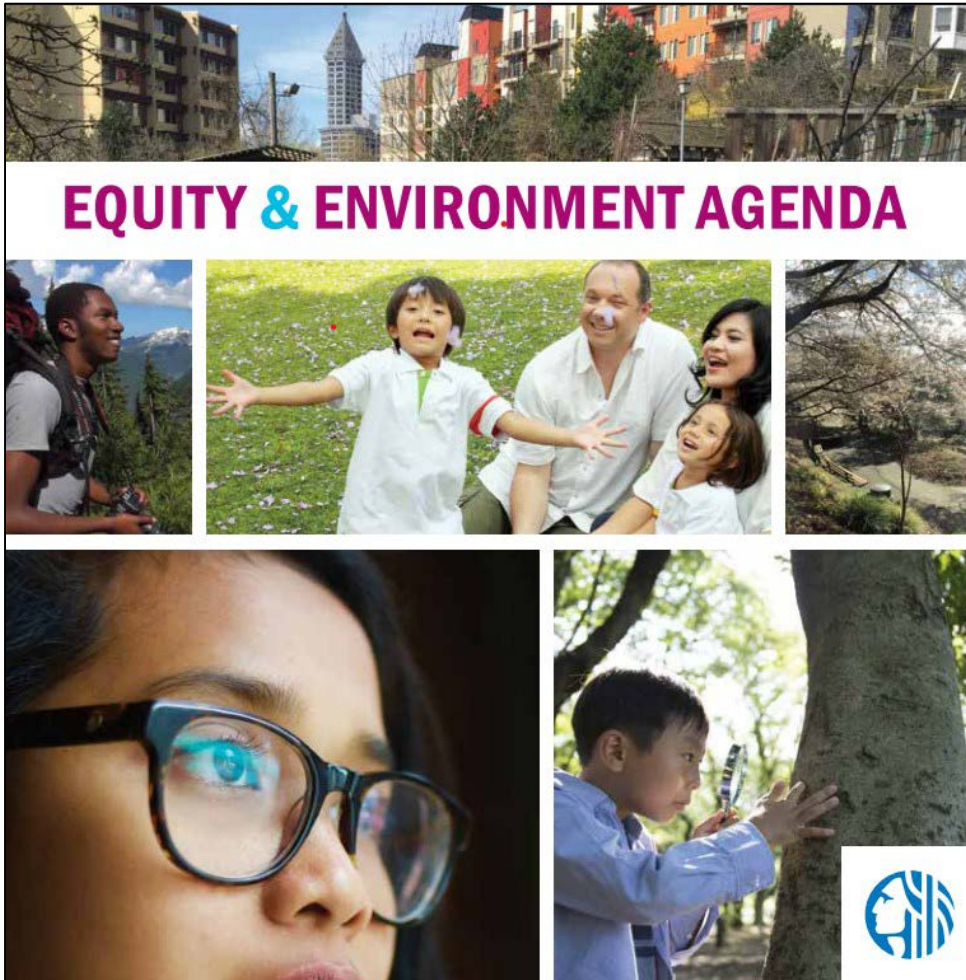
CA Senate Bill 1000 requires that we:

- Adopt a map of **Environmental Justice Communities***
- Develop environmental justice policies in the General Plan to address “**unique or compounded health risks**”

The Planning & Historic Preservation Commissions have called for General Plan amendments to address **racial & social equity**.

* Referred to as “Disadvantaged Communities” in SB1000

SAN FRANCISCO APPROACH: ENVIRONMENTAL JUSTICE FRAMEWORK



- **Environmental Justice Framework** will set vision & goals
- EJ will be incorporated across **General Plan Elements** (starting with Housing, Transportation, & Safety)
- Work is integrated with the Planning Department's **Racial & Social Equity Plan**

Seattle's "Equity & Environment Agenda" is a good example of a community-led EJ policy platform

WHAT POLICIES CAN ADDRESS ENVIRONMENTAL JUSTICE?



**CLEAN & HEALTHY
ENVIRONMENTS**



HEALTHY PUBLIC FACILITIES



HEALTHY FOOD ACCESS



**SAFE, HEALTHY &
AFFORDABLE HOMES**



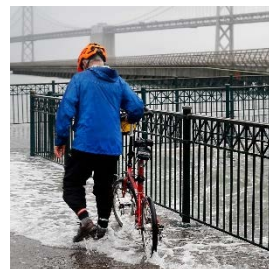
PHYSICAL ACTIVITY



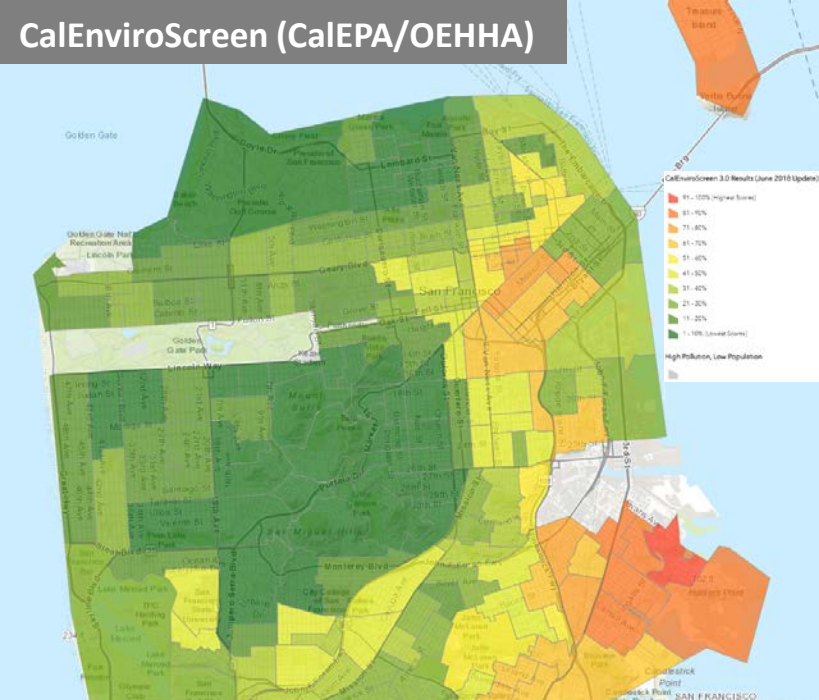
EQUITABLE & GREEN JOBS



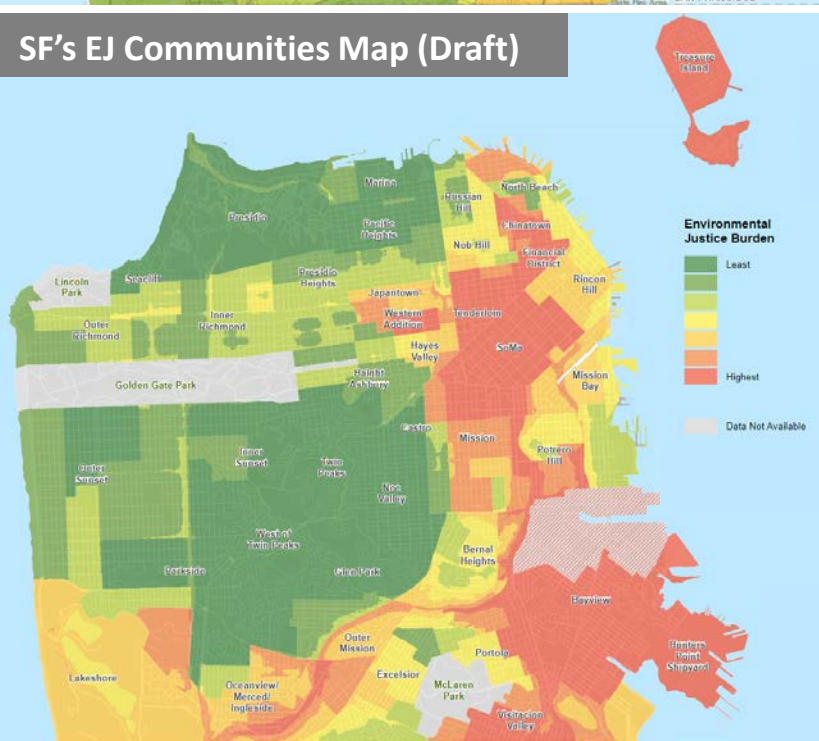
**EMPOWERED
NEIGHBORHOODS**



**CLIMATE RESILIENCE &
JUSTICE**



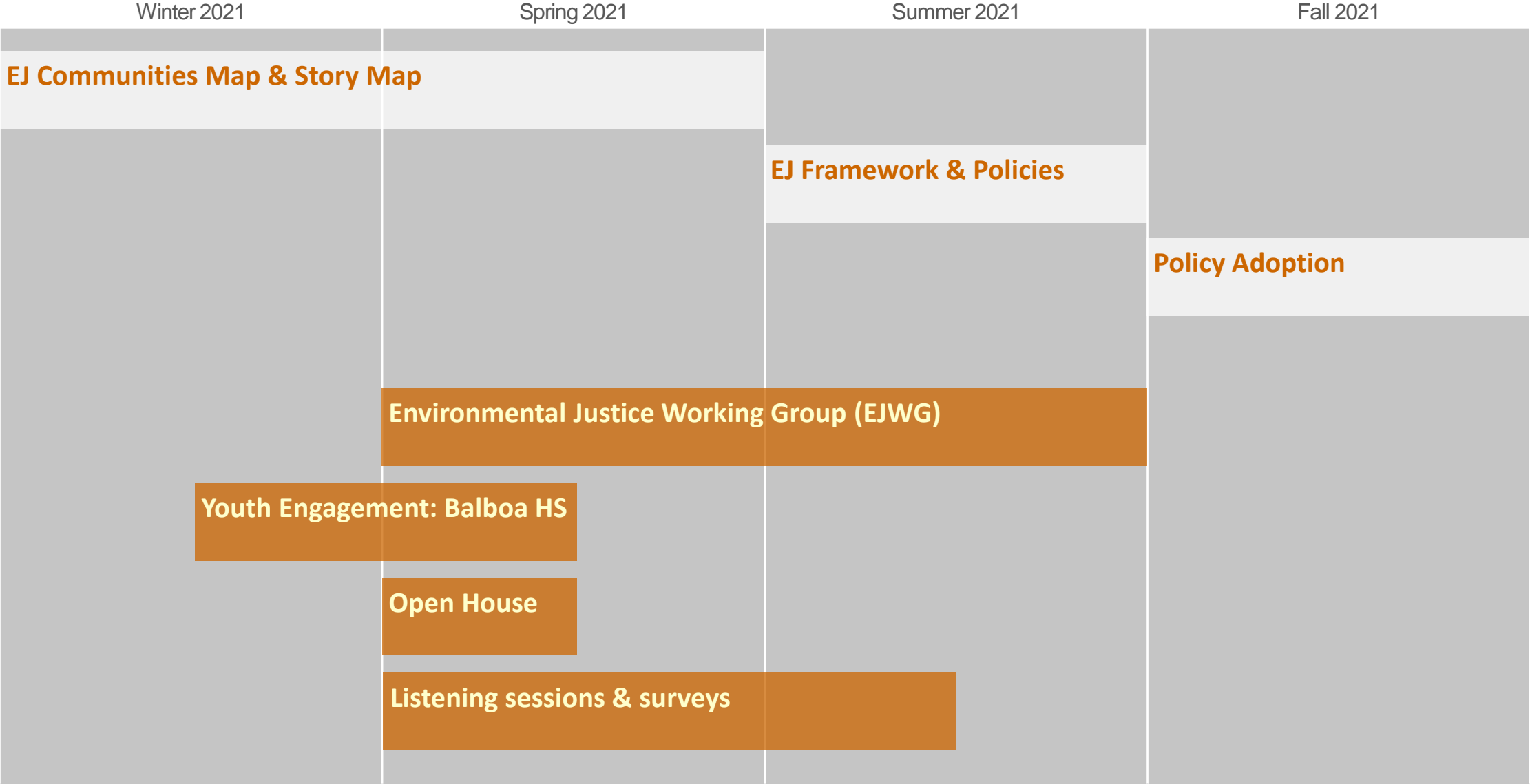
SF's EJ Communities Map (Draft)



WHERE ARE EJ COMMUNITIES LOCATED?

- SB1000 points to **CalEnviroScreen (CalEPA/OEHHA)** but communities may identify additional data
 - Combines 20 pollution, health & demographic indicators
 - Used by state agencies to prioritize grants and funding
- Our **San Francisco EJ Communities Map (draft)** includes additional local data on pollution and demographics
- We are creating an online map tool with data on other relevant EJ topics

ENVIRONMENTAL JUSTICE FRAMEWORK & GENERAL PLAN POLICIES
TIMELINE (December 2020 Draft)



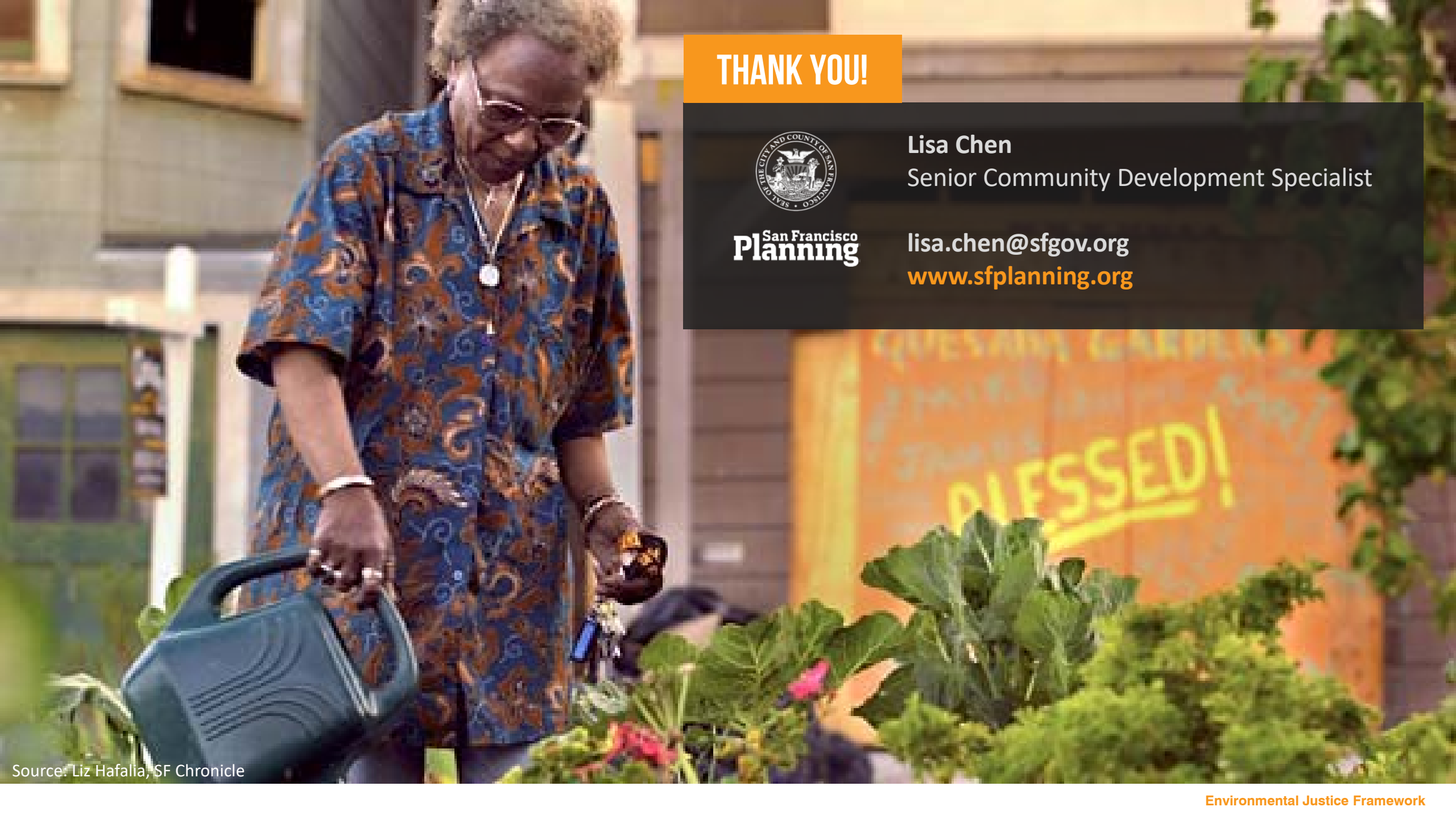
APPROACH TO COMMUNITY ENGAGEMENT

Citywide but focused on **EJ Communities**

- Launching an EJ Working Group (with community & City EJ experts)
- Broader outreach events (Open House, focus groups, surveys)
- Utilizing youth engagement opportunities
- Stipends for some participants



Source: Planning Department



THANK YOU!



San Francisco
Planning

Lisa Chen

Senior Community Development Specialist

lisa.chen@sfgov.org

www.sfplanning.org