

**WELCOME!**

# Japantown Osaka Way Upgrades

## JTF UPDATES

12/11/2024

日本町

大阪ウェイ (ブキャナン モール)

アップグレードプロジェクト

JAPANTOWN

OSAKA WAY (BUCHANAN MALL)

UPGRADES PROJECT

# PRESENTATION

- Preferred Design Recap
- Design Development
  - ◆ 65% Design Milestone
  - ◆ Design updates: Seat walls, Planting and Tree Plan
  - ◆ Lighting & Lantern Samples
- Community Outreach Updates
- Next Steps & Action Items



# PROJECT GOALS

Available Funding: \$7M

## 1 ENHANCE ACCESSIBILITY



Enhance accessibility of Osaka Way for seniors and people with disabilities and limited mobility.

## 2 RESTORE THE RUTH ASAWA FOUNTAINS



Rehabilitate the Ruth Asawa fountains that are iconic to Osaka Way.

## 3 SUPPORT THE BUSINESS COMMUNITY



Support the business community by embellishing the sense of cultural authenticity and enhancing the commercial edges of Osaka Way.

# PREFERRED DESIGN DIRECTION - OPEN HOUSE #3



1 pedestrian scale pole lighting (16ft)



2 garden gate lighting



10 lanterns (see options)



11 string lights (see options)



12 reinstall lamp posts



13 movable furnishings + storage structure



1 precast seat walls



2 restored fountains w/ new plumbing and lighting



3 cobble w/ compliant walking surface



4 stone paving w/ metal inlay accents



5 refurbished Ruth Asawa benches



6 ginkgo trees



7 cherry trees

# PREFERRED DESIGN DIRECTION - OPEN HOUSE #3



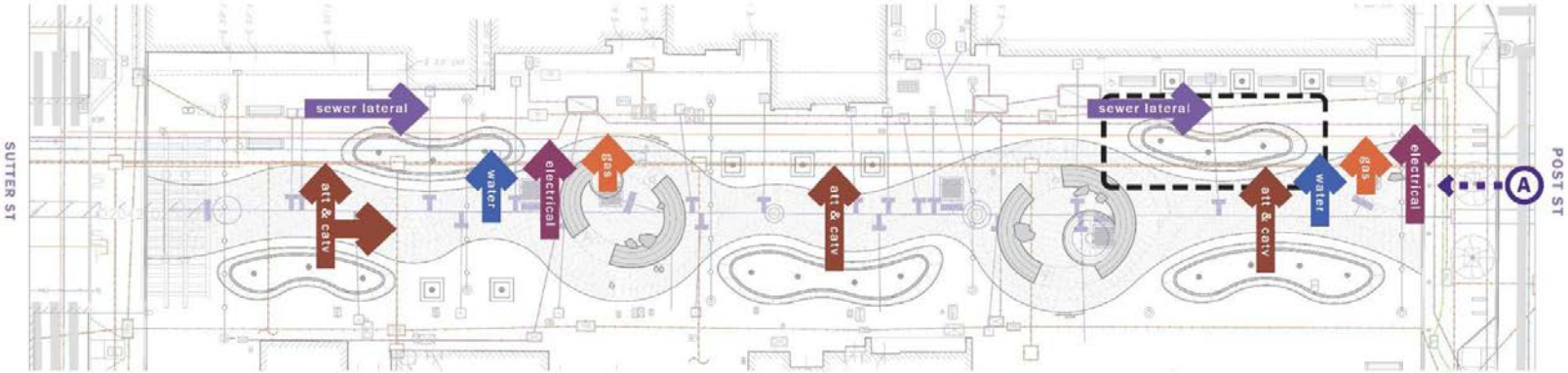
# OPTION 1: STEPPED WALLS (POST ST ENTRY)



# OPTION 1: STEPPED WALLS (SIDE ELEVATION)



# DESIGN LIMITATIONS





# UPDATED PLAN



8 pedestrian scale pole lighting (16ft)



9 garden gate lighting & entry sign



10 catenary lighting (see options)



11 36"x18" pole banners



12 reinstall (5) lamp posts



13 cherry tree plaques



1 precast seat walls



2 restored fountains w/ drainage basin, plumbing, and signage



3 ADA compliant granite cobble river



4 exposed aggregate concrete



5 refurbished Ruth Asawa benches



6 ginkgo trees



7 cherry trees

# POST ST ENTRY



# PLANTER SIDE ELEVATION



# CATENARY LIGHTING - OPTION 1A (6" AMBRIA, 30" SPACING, 12' HIGH)



# CATENARY LIGHTING - OPTION 1A (6" AMBRIA, 30" SPACING, 12' HIGH)



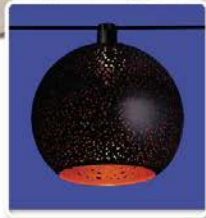
# CATENARY LIGHTING - OPTION 1B (6" AMBRIA, 30" SPACING, 12' HIGH)



# CATENARY LIGHTING - OPTION 1B (6" AMBRIA, 30" SPACING, 12' HIGH)



# CATENARY LIGHTING - OPTION 2A (12" AMBRIA, 42" SPACING, 14' HIGH)

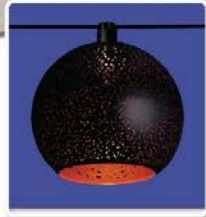




# CATENARY LIGHTING - OPTION 2A (12" AMBRIA, 42" SPACING, 14' HIGH)



# CATENARY LIGHTING - OPTION 2B (12" AMBRIA, 42" SPACING, 14' HIGH)



# CATENARY LIGHTING - OPTION 2B (12" AMBRIA, 42" SPACING, 14' HIGH)



# CATENARY LIGHTING - OPTION 3 (12" ZUME, 42" SPACING, 14' HIGH)



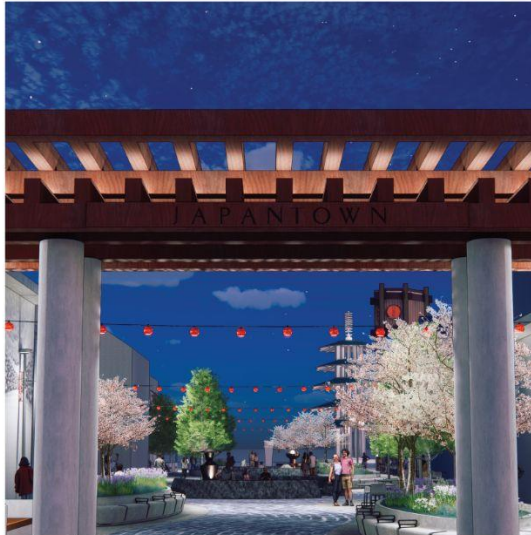
# CATENARY LIGHTING - OPTION 3 (12" ZUME, 42" SPACING, 14' HIGH)



# CATENARY LIGHTING - OPTION 3 (12" ZUME, 42" SPACING, 14' HIGH)



# CATENARY LIGHTING - OPTIONS COMPARISON



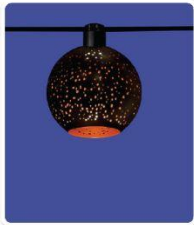
**Option 1:** 6" Ambria, 30" spacing, 12' high  
-custom metal finish color  
-adjustable temperature, but not color



**Option 2:** 12" Ambria, 42" spacing, 14' high  
-custom metal finish color  
-adjustable temperature, but not color



**Option 3:** 12" Zume, 42" spacing, 14' high  
-metal shade color options  
-adjustable color and temperature



# ALLEYS



**C** WEST ALLEY

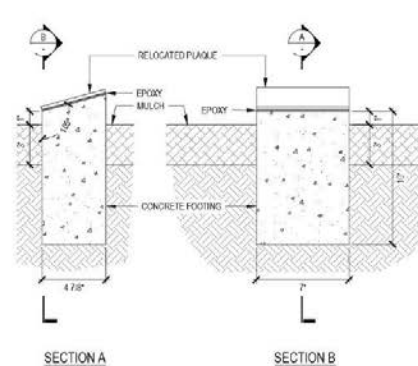
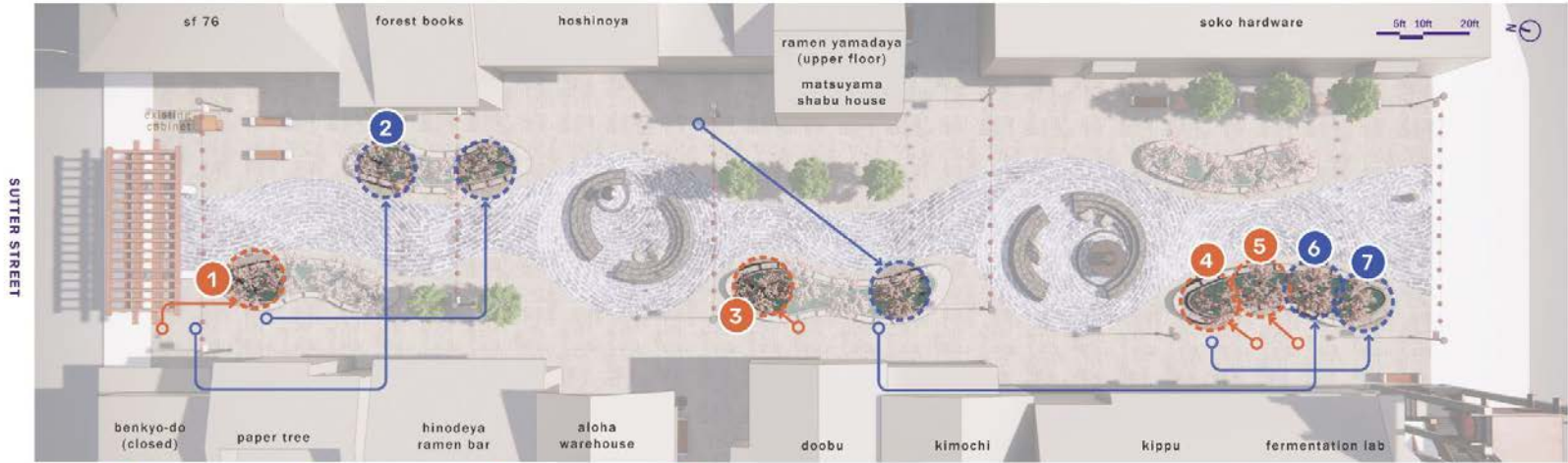


**D** EAST ALLEY

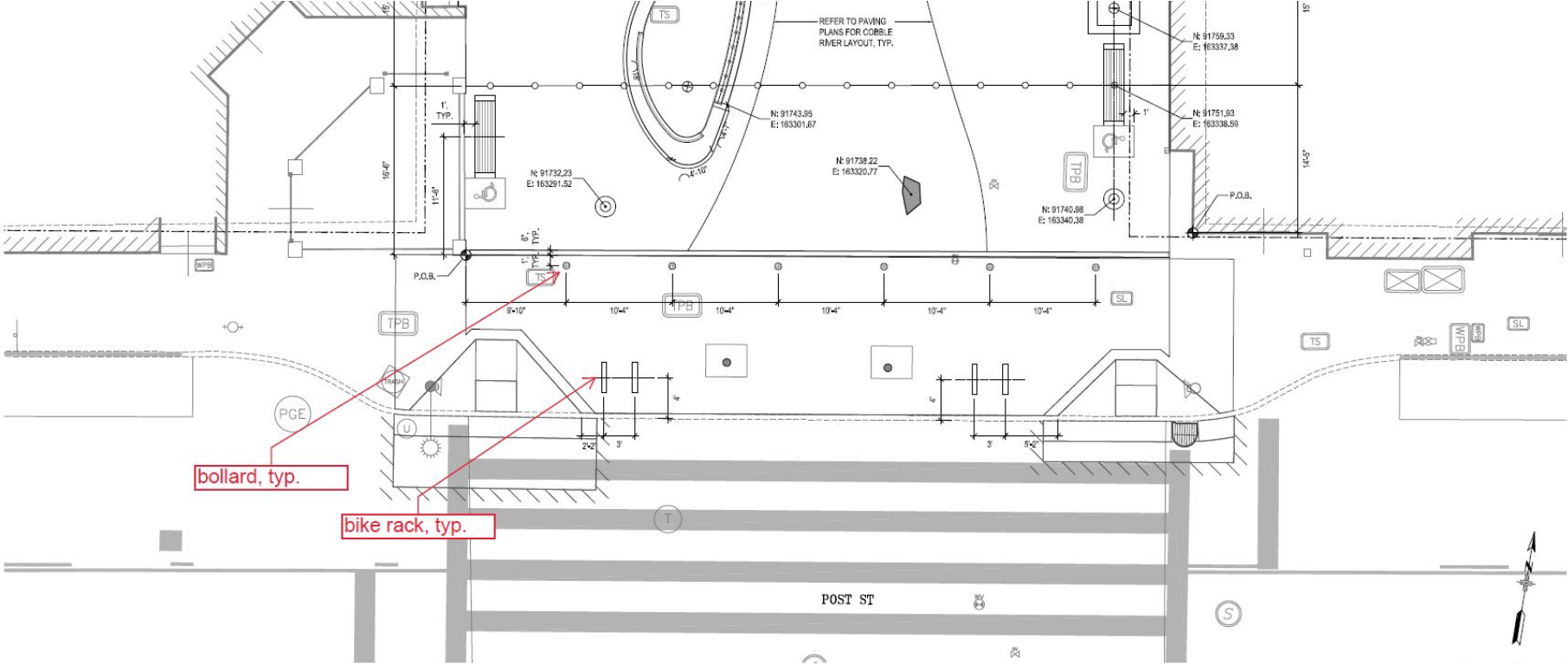




# RELOCATED CHERRY TREES & PLAQUES



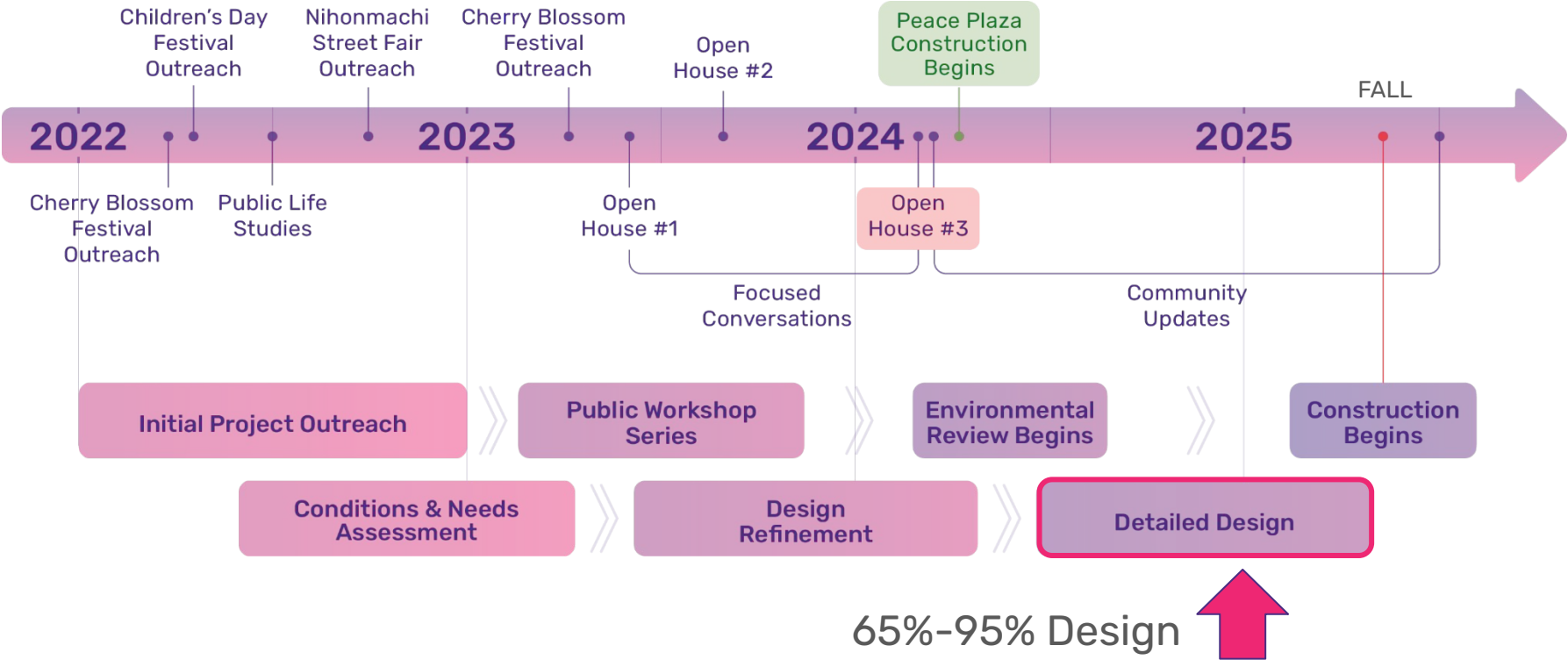
# BOLLARDS & VEHICULAR ACCESS



bollard, typ.

bike rack, typ.

# PROJECT TIMELINE



## NEXT STEPS

- Community Briefing: January 21, 2025 (to be confirmed)
- 95% Design (February 2025)
  - ◆ Design is almost complete with plans, specifications, details, final engineer's cost estimate
  - ◆ Final design/constructability reviews begin
- 100% Design (April 2025)
  - ◆ Contract document sign-off
  - ◆ Package documents for advertisement
- Construction Contract Advertisement & Bidding Process (May 2025)
  - ◆ ~6 month process
- Construction Start date: potentially Fall 2026

# QUESTIONS?



# THANK YOU!

[SFPlanning.org/JapantownBuchananMall](https://www.sfplanning.org/JapantownBuchananMall)

**María De Alva**, *Outreach and Engagement*  
San Francisco Planning  
[maria.dealva@sfgov.org](mailto:maria.dealva@sfgov.org)

**Trent Tieger**, *Project Manager*  
San Francisco Public Works  
[trent.tieger@sfdpw.org](mailto:trent.tieger@sfdpw.org)

# PREFERRED DESIGN DIRECTION - OPEN HOUSE #3



9 pedestrian scale pole lighting (16ft)



10 garden gate lighting



10 lanterns (see options)



11 string lights (see options)



12 reinstall lamp posts



13 movable furnishings + storage structure



1 precast seat walls



2 restored fountains w/ new plumbing and lighting



3 cobble w/ compliant walking surface



4 stone paving w/ metal inlay accents



5 refurbished Ruth Asawa benches



6 ginkgo trees



7 cherry trees



7 cherry trees

# UPDATED PLAN



8 pedestrian scale pole lighting (16ft)



9 garden gate lighting & entry sign



10 catenary lighting (see options)



11 36"x18" pole banners



12 reinstall (5) lamp posts



13 cherry tree plaques



1 precast seat walls



2 restored fountains w/ drainage basin, plumbing, and signage



3 ADA compliant granite cobble river



4 exposed aggregate concrete



5 refurbished Ruth Asawa benches



6 ginkgo trees



7 cherry trees