



SF GATEWAY

Agenda

Objective

Informational Update on SF Gateway

Project Refresh

Design Overview

Guiding Principles

What We've Heard

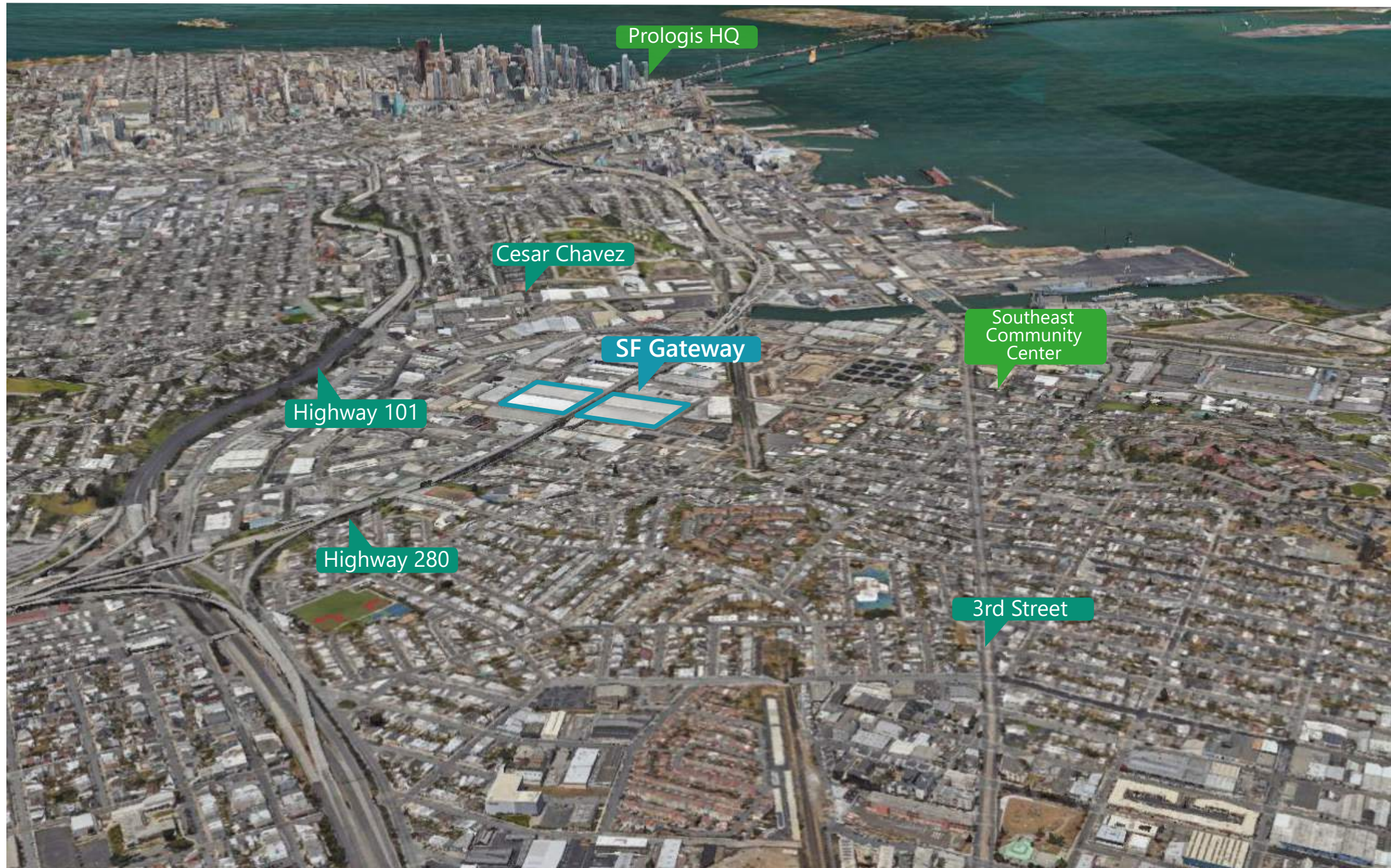
Project Timeline Status & What is Next

EIR Status

City Approvals Process

Community Engagement

SF GATEWAY : WHERE WE ARE



Aerial Location Map



Existing Conditions

SF GATEWAY : PROJECT OVERVIEW

Over 1 million SF of innovative multi-level PDR space for a variety of users

Innovative rooftop featuring largest solar array in the city

35,000 SF of dedicated street level maker space, plus 8,000 SF of cafe and retail space for local business

Streetscape improvements on Toland, McKinnon, Kirkwood, Rankin and Selby to improve safety and connectivity of the neighborhood

2,000 full time jobs supported by project operation

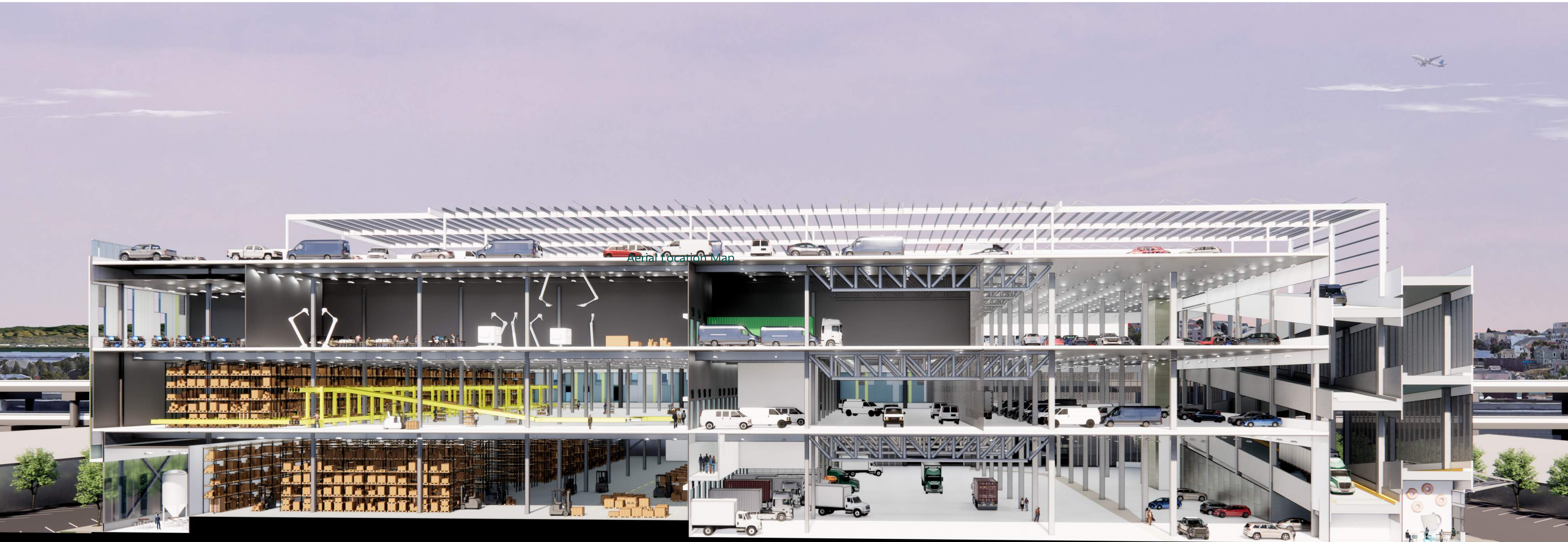
2,125 construction jobs created in addition to substantial workforce training and hiring programs

Vehicle charging facilities to transition to a cleaner electric future

Partnerships with local artists to create and showcase works of art within the project

Over 980,000 SF of PDR support area including service/staging yards and vehicle circulation

SF GATEWAY DESIGN : CONCEPT SECTION



SF GATEWAY : PROJECT OVERVIEW



SF GATEWAY : GUIDING PRINCIPLES



GOOD JOBS

Generating good PDR jobs and helping our neighborhoods recover



COMMUNITY FOCUS

Investing in the Bayview Hunters Point community and forming long term partnerships



INNOVATIVE PDR

Committing to the development of modern, sustainable and responsible PDR

SF GATEWAY : WHAT WE'VE HEARD

Commitment

demonstrate long term engagement and well-informed community benefits that will support the Bayview Hunters Point community for years to come

Accountability

provide specific methods of accountability to ensure commitments made to community are delivered

Local Jobs

- prioritize local residents for construction and operational jobs
- set specific goals for BVHP residents, LBEs, and hyperlocal contractors
- support strong workforce training programs

Environment & Resilience

- improve wellness of workers and community
- support transition to a cleaner, electrified future
- improve resilience of project, surroundings and City supply chain

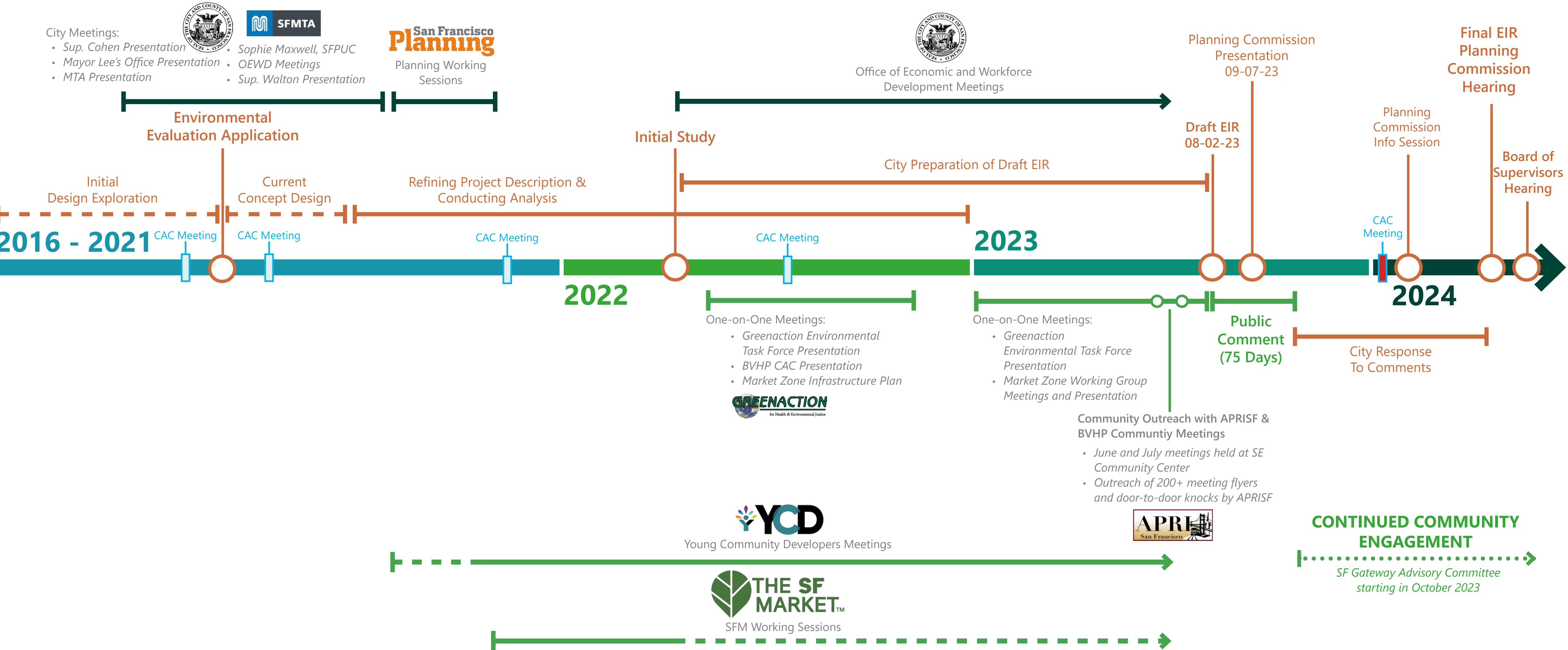
Transportation & Infrastructure

- improve safety of neighborhood and connect to the broader network through new infrastructure and streetscape improvements
- unlock underutilized capacity to improve flow of traffic and pedestrians in and around project

Local Business & Community Support

- Foster local entrepreneurship opportunities
- Engage in long-term collaboration with local businesses, artists and PDR partners to support community
- Invest in strategies that improve the economic stability and growth of the BVHP community

SF GATEWAY : WHERE WE'VE BEEN



SF GATEWAY : EIR OVERVIEW

Draft Environmental Impact Report (EIR) published in August 2023

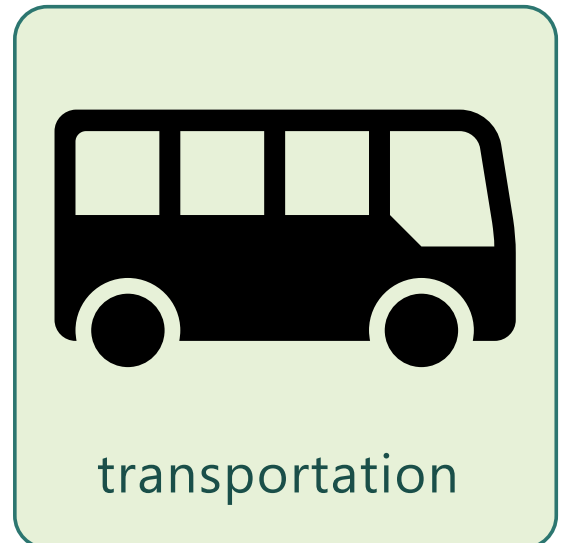
- Finds that all environmental impacts can be reduced to a **less-than-significant level with mitigation**
- Focuses on three environmental impact topics: *transportation and circulation, noise and vibration, and air quality*
- Public comment period: August 2—October 16, 2023

Mitigation measures will be required for the following topics:

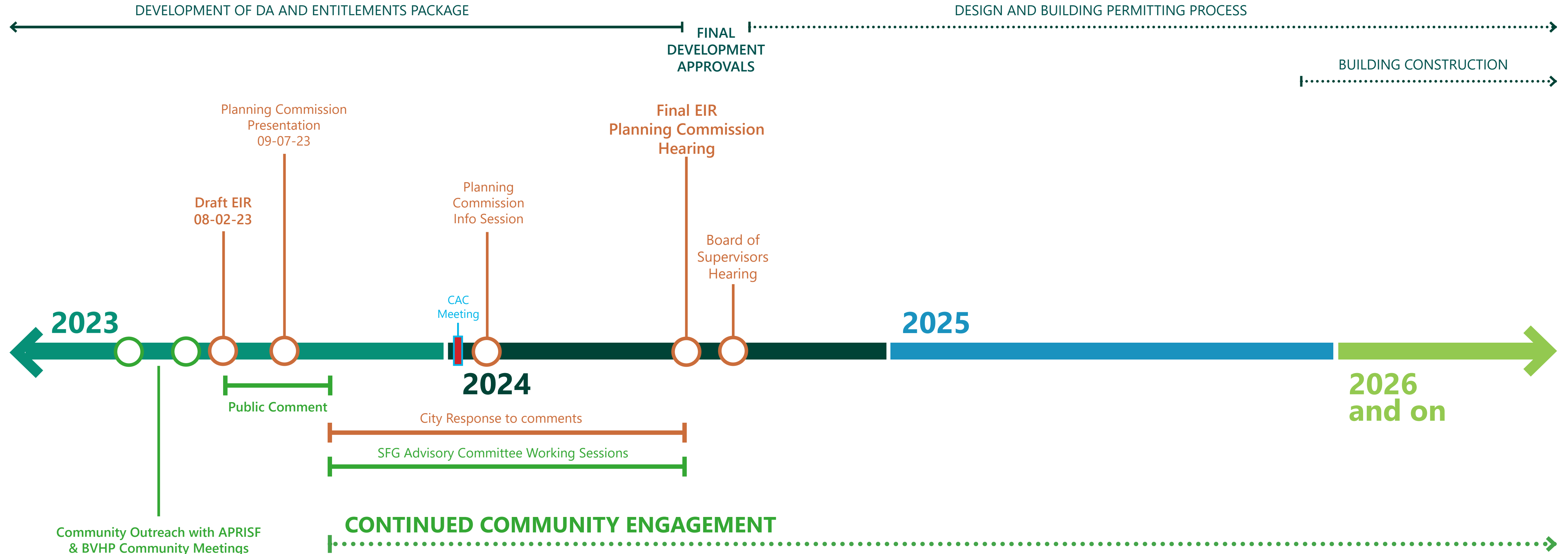
- **Air quality:** *measures include electrification of equipment, generator specifications, CalGreen Tier 2 building standards, OEMP*
- **Noise & vibration:** *measures to attenuate noise from equipment*
- **Cultural, tribal cultural, & paleontological resources:** *monitoring, treatment of any resources that are discovered*
- **Wind:** *installing and maintaining trees*

Overall approach to analysis:

- EIR analyzes potential impacts by studying a use mix that is realistic and that assumes an intensive level of vehicle trips (i.e. about 2/3 of space is assumed parcel delivery service)
- All impacts are analyzed in relation to existing conditions, including existing air quality conditions in the Bayview
- Cumulative analysis looks at impacts of the project as well as other proposed projects in the vicinity, and overall growth under City planning projections



SF GATEWAY : WHERE WE'RE HEADING



SF GATEWAY : COMMUNITY ENGAGEMENT

SF Gateway team continues outreach to key stakeholders including organizations immediately adjacent to the site and other key groups from the Bayview Hunters Point community

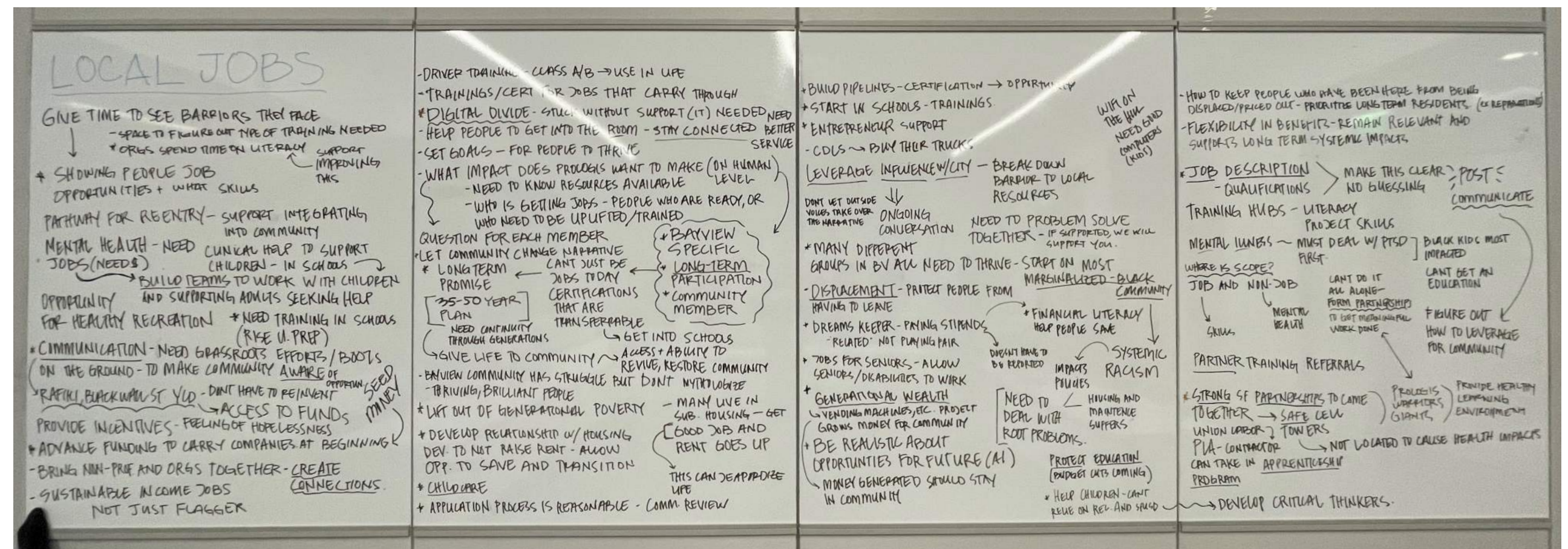
The SF Gateway Advisory Committee was formed by Prologis as an opportunity for in depth discussions and feedback regarding community needs and potential benefits.



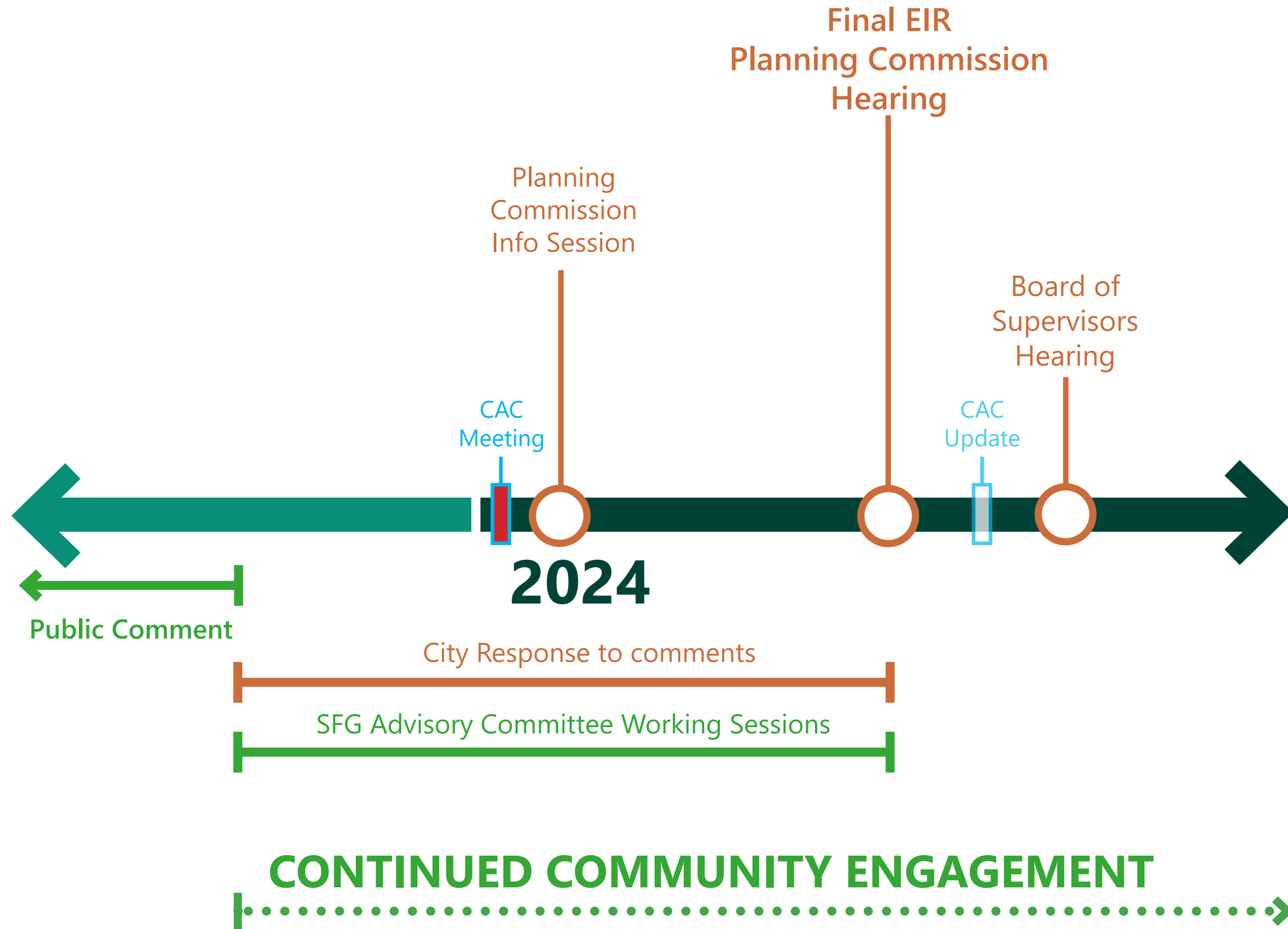
Bayview Hyperlocal Contractors

From The Heart
SF Black Wall Street
YCAT-C
Marie Harrison Community Foundation

One Loud
Meals on Wheels
SF Market
EDOT



SF GATEWAY : WHERE WE'RE HEADING





THANK YOU!