



# Your Guide to the Plan

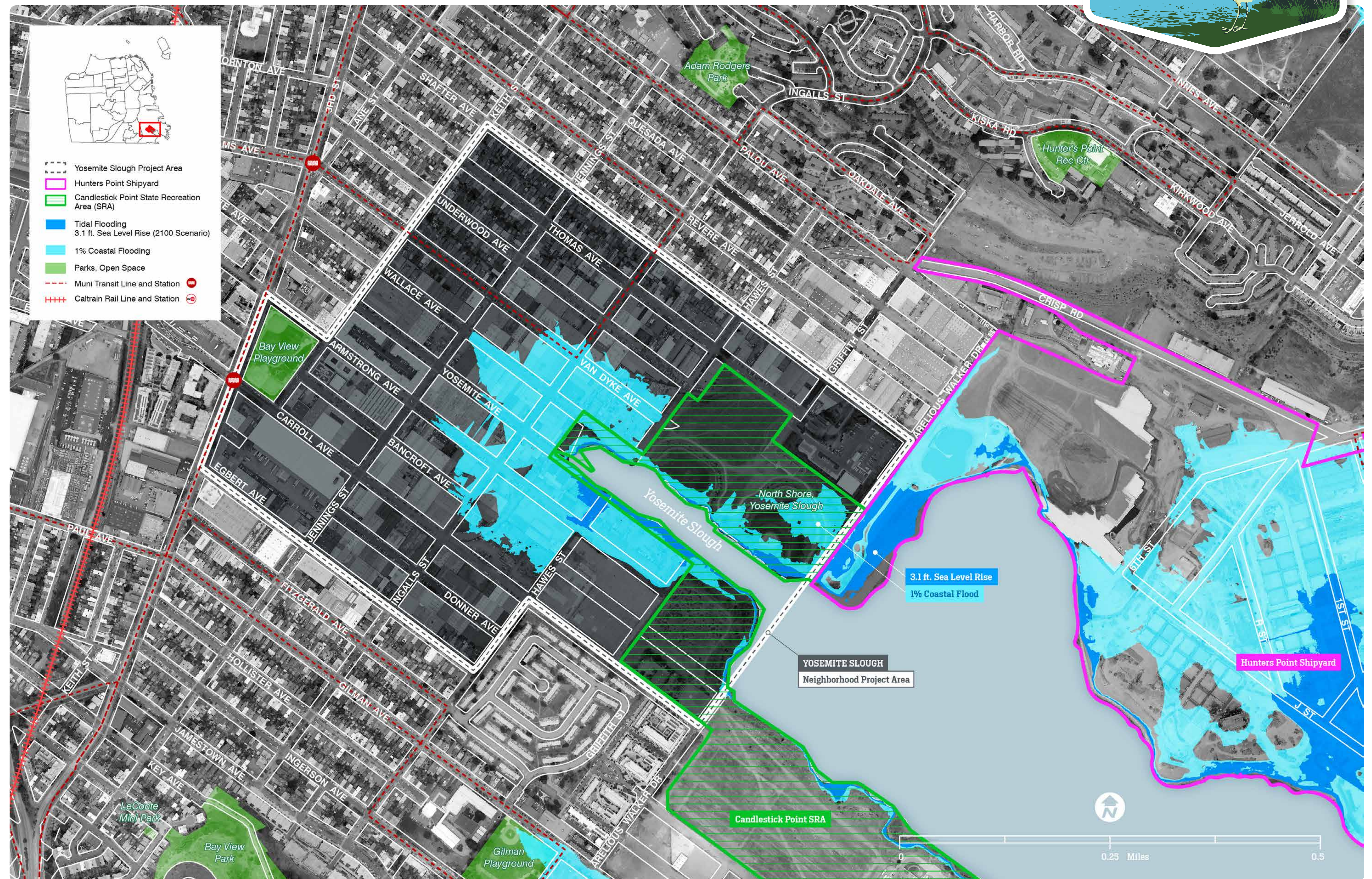


## What is YSNAP?

The Yosemite Slough Neighborhood Adaptation Plan (YSNAP) will outline strategies to prepare the neighborhood around Yosemite Slough to adapt to sea level rise and coastal flooding. YSNAP will assess potential risks and impacts focusing on strategies that would protect the community from 3.1 feet of projected sea level rise by 2100.

Success in this work depends on learning from the decades of community activism focused on environmental justice in Bayview Hunters Point.

This plan is funded by the Governor's Office of Land Use and Climate Innovation.



## Project Timeline

2023

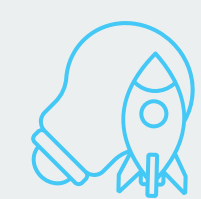
WINTER



Research

2024

SPRING



Project Launch

SUMMER



Initial Outreach

FALL



Outreach & Analysis

WINTER



Outreach & Analysis

2025

SPRING



Outreach & Analysis

SUMMER



Outreach & Analysis

FALL



Draft Plan

WINTER



Finalize Plan

We are here



San Francisco  
Planning

SFEI  
SAN FRANCISCO ESTUARY FEDERATION

En2action  
engage • empower • act

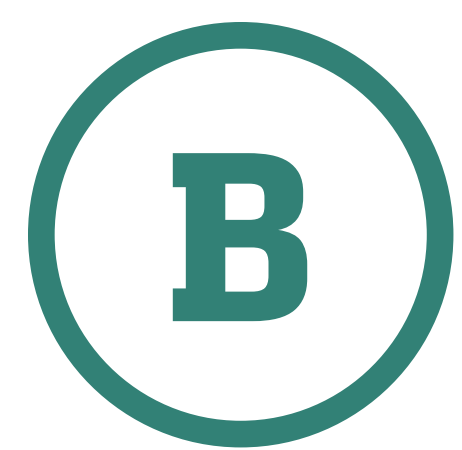


CA Governor's Office of  
Land Use and  
Climate Innovation



[sfplanning.org/ysnap](https://sfplanning.org/ysnap)





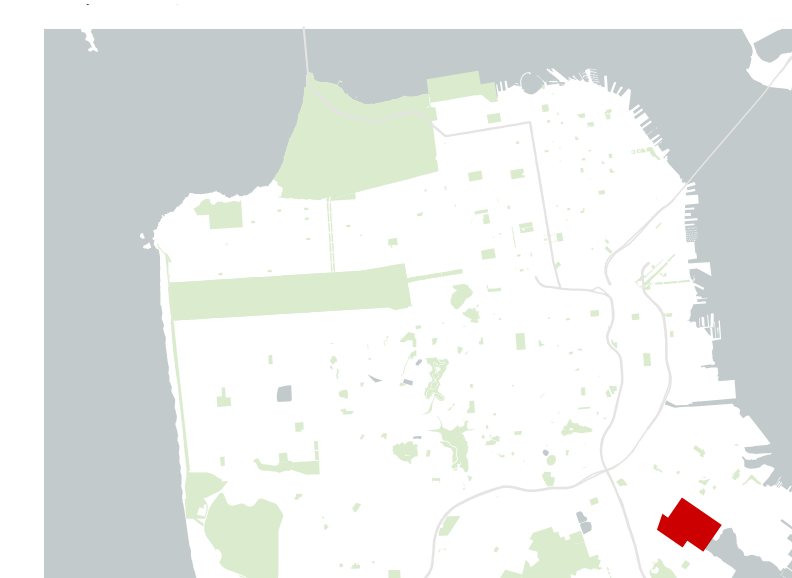
# Scenarios for a Resilient Future

The Yosemite Slough Neighborhood Adaptation Plan process is sponsored by the City and funded by the Governor's Office of Land Use and Climate Innovation. Adaptation scenarios are conceptual only and do not represent an adopted plan. They are used to determine community priorities and inform strategies that address sea level rise expected by 2050 and 2100. California State Parks owns the immediate shoreline; any planning will be coordinated with State Parks.

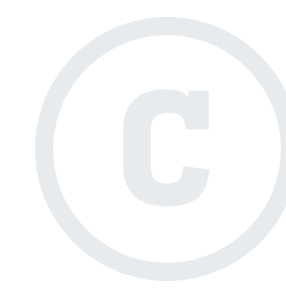


## SCENARIO 1: LIVING SEAWALL

Also includes Wetlands Restoration, Ecotone Slope Enhancement, and Stormwater Management

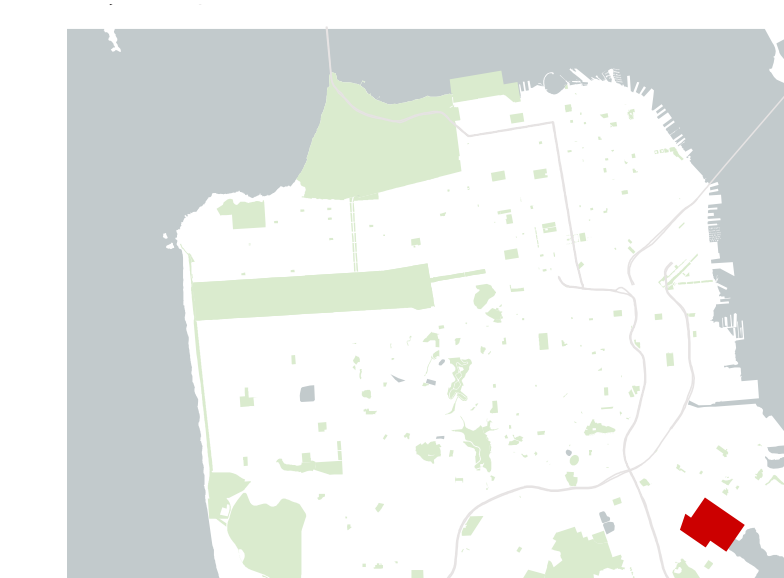


- Project Boundary
- Existing Buildings
- Existing and Planned Open Spaces
- Existing Recreational Bike and Pedestrian Trails
- Proposed Bay Trail
- Living Seawall
- Ecotone Slope Enhancement
- Restored Wetlands
- Public Access Point



## SCENARIO 2: ECOTONE LEVEE

Also includes Wetlands Restoration, Ecotone Slope Enhancement, and Stormwater Management



- Project Boundary
- Existing Buildings
- Existing and Planned Open Spaces
- Existing Recreational Bike and Pedestrian Trails
- Proposed Bay Trail
- Ecotone Levee
- Ecotone Slope Enhancement
- Restored Wetlands
- Public Access Point



San Francisco  
Planning

SFEI  
SAN FRANCISCO ESTUARY FEDERATION

En2action  
engage • empower • act



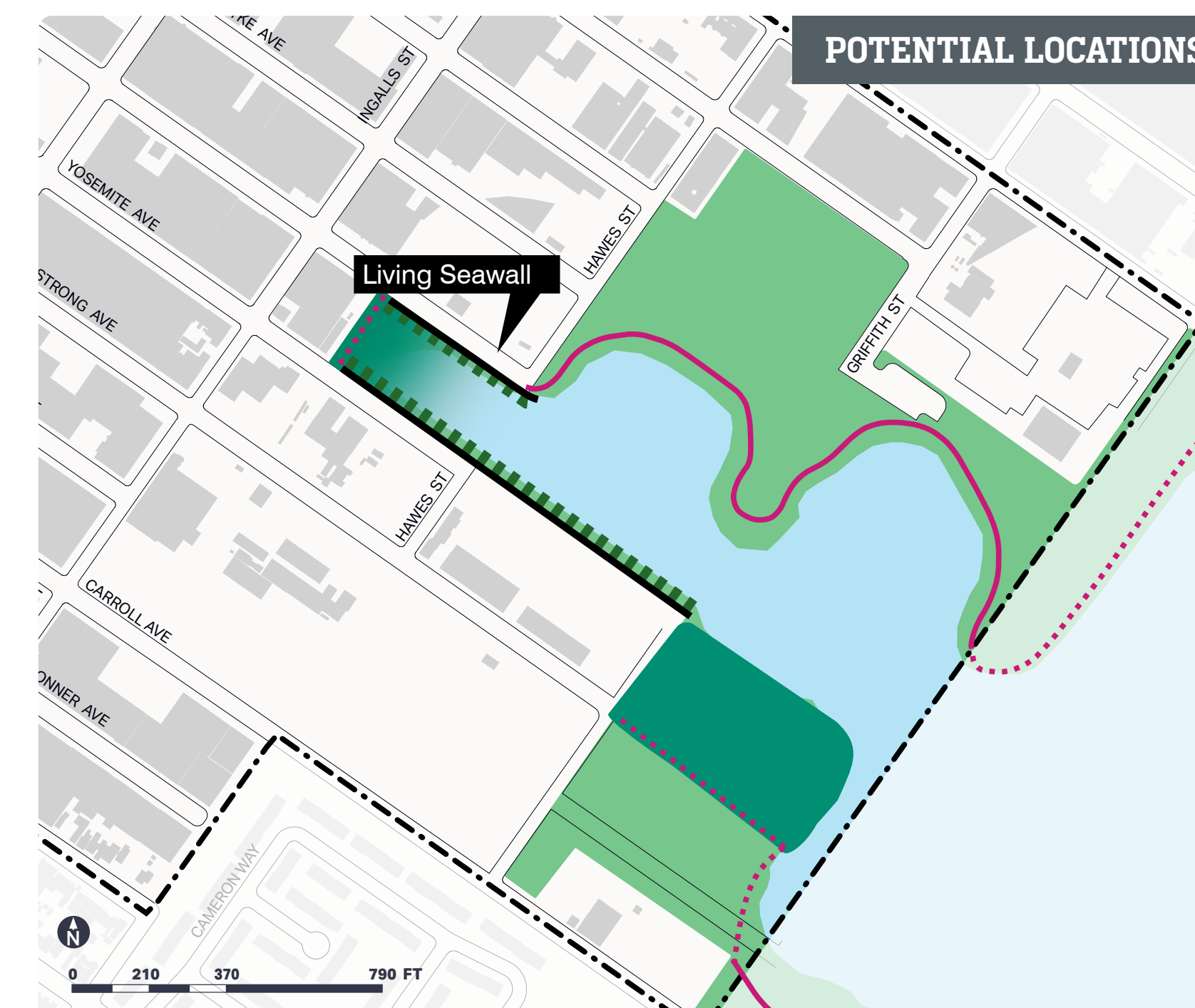
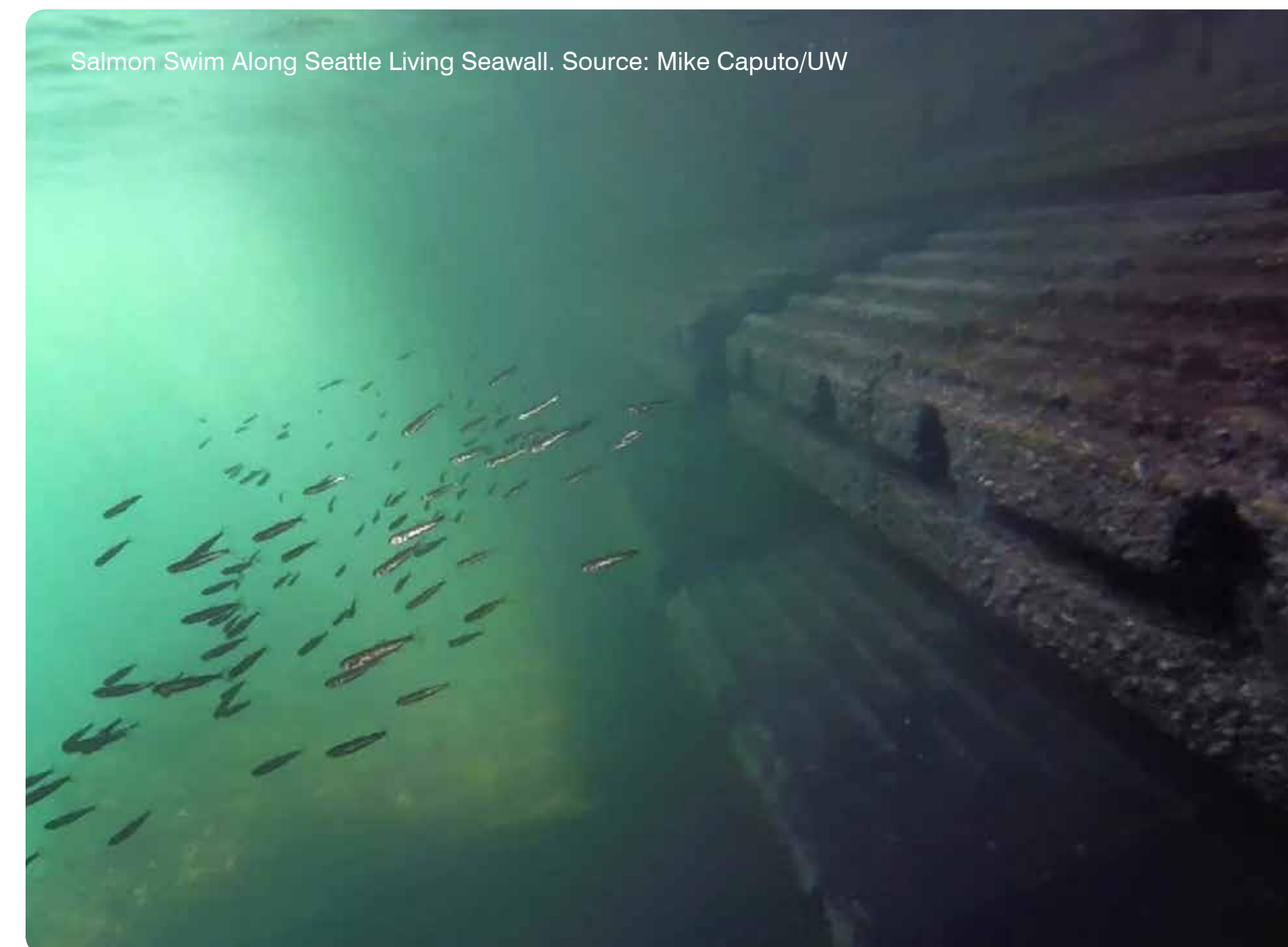
[sfplanning.org/ysnap](https://sfplanning.org/ysnap)





# Scenario 1: Living Seawall

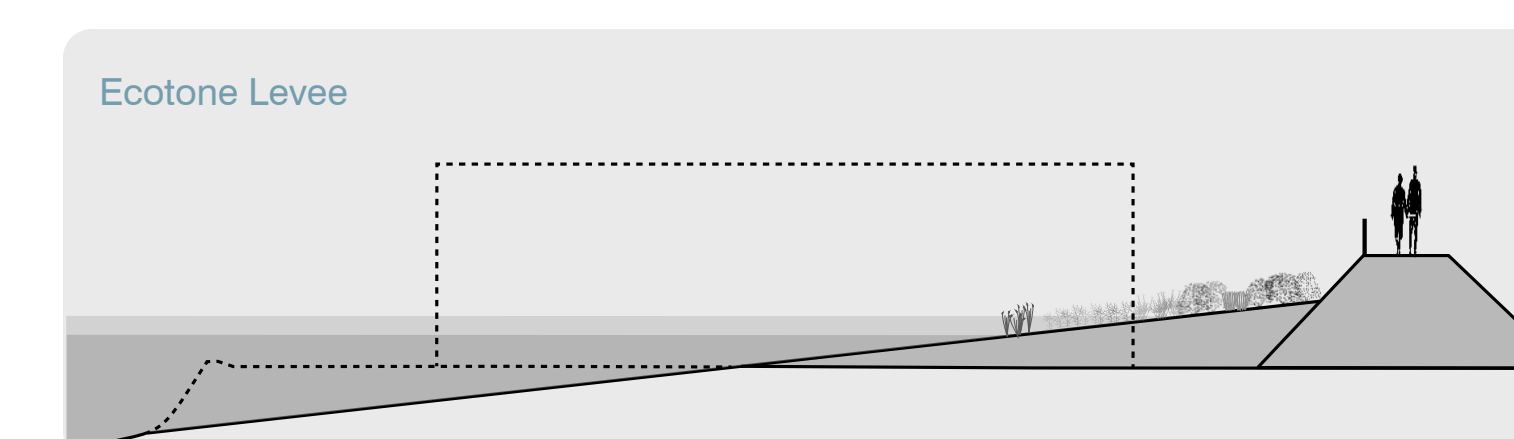
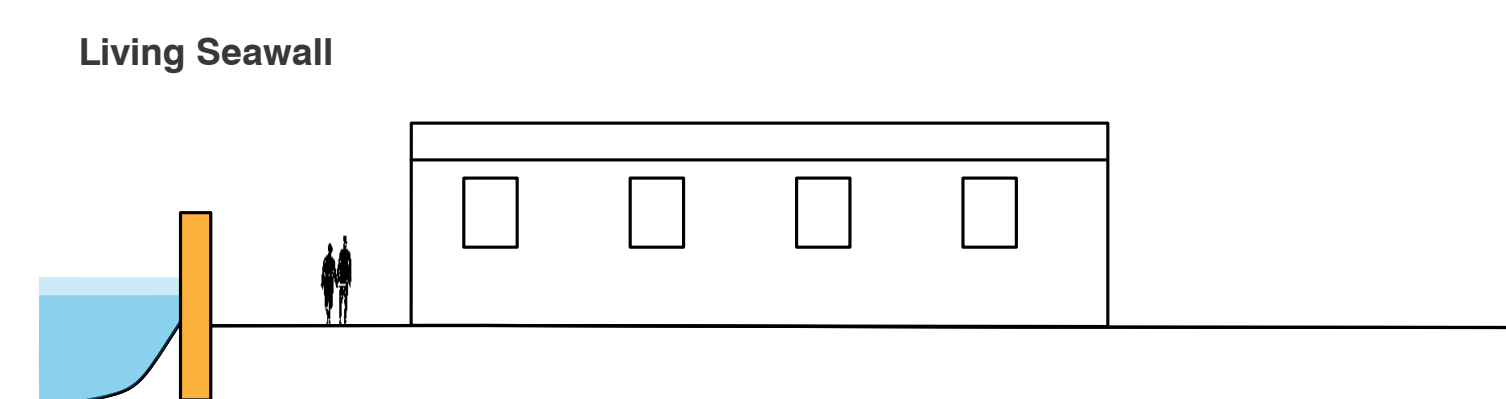
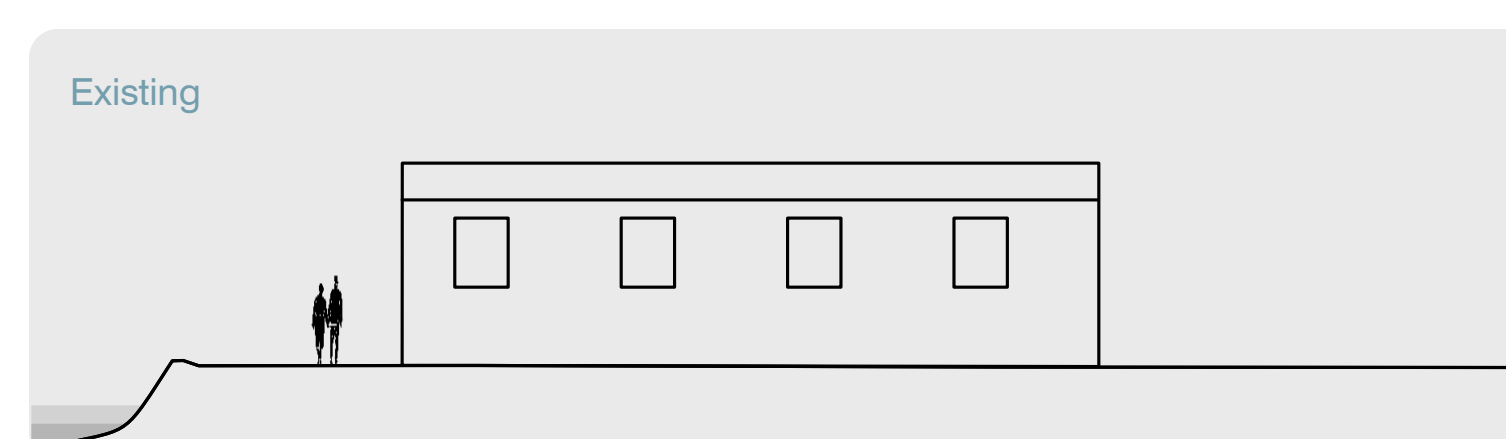
A Living Seawall has textured surfaces for sea life and plants. It would be on the North and South Shorelines to reduce waves and prevent flooding. Wetlands Restoration, Ecotone Slope Enhancements, and Stormwater Management would support protecting the neighborhood from flood hazards. Adaption scenarios are conceptual and intended for community discussion purposes only.



What do you think?



## Comparison of Existing Conditions and Scenario Options



The Yosemite Slough Neighborhood Adaptation Plan (YSNAP) process is sponsored by the City and funded by the Governor's Office of Land Use and Climate Innovation. Adaptation scenarios are conceptual only and do not represent an adopted plan. They are used to determine community priorities and inform strategies that address sea level rise expected by 2050 and 2100. California State Parks owns the immediate shoreline; any planning will be coordinated with State Parks.



San Francisco  
Planning

SFEI  
SAN FRANCISCO ESTUARY INSTITUTE

En2action  
engage • empower • act



[sfplanning.org/ysnap](https://sfplanning.org/ysnap)





# Scenario 2: Ecotone Levee

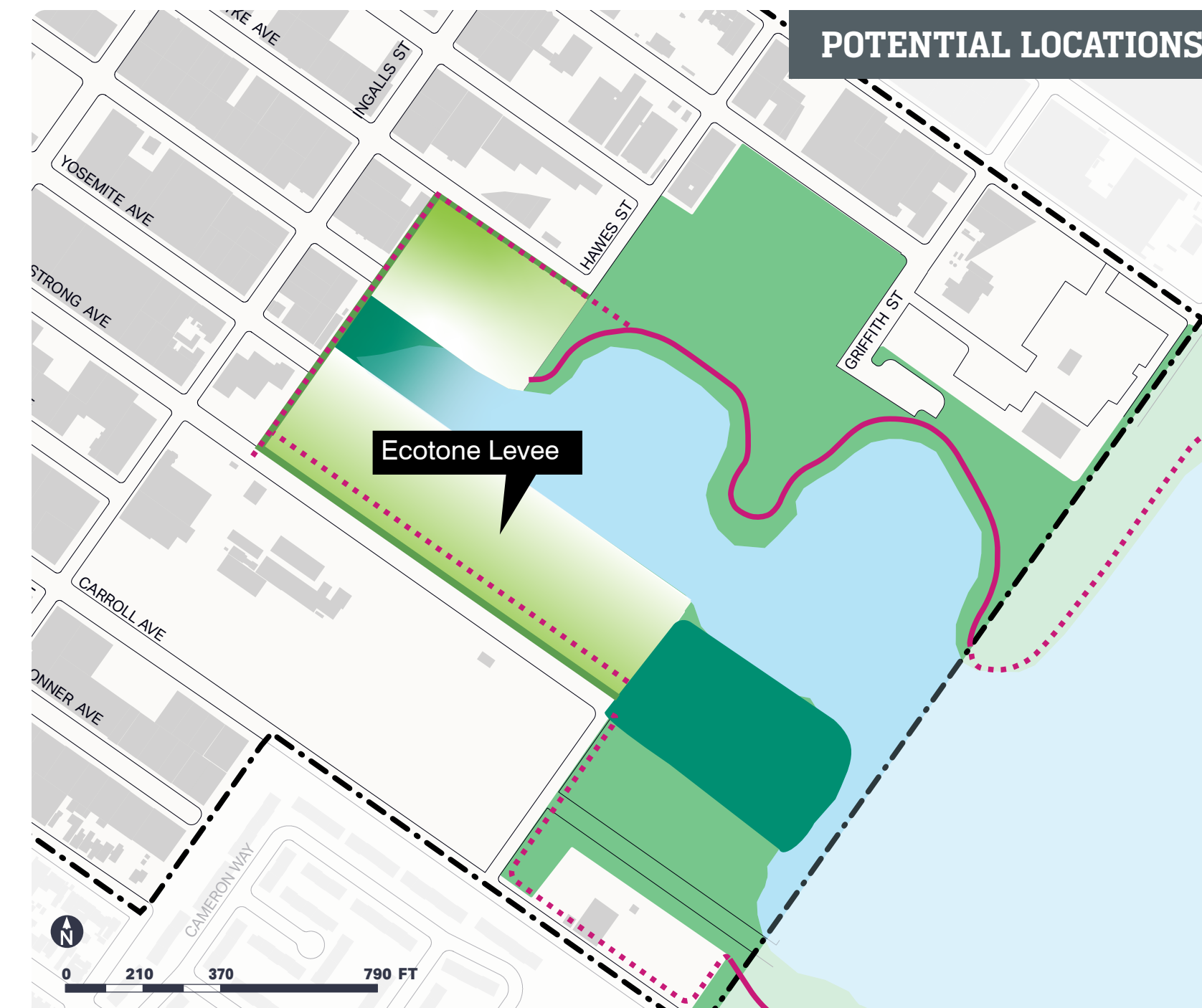
An Ecotone Levee has a gentle, planted slope that transitions from the Bay to the land. It would be on the North and South Shorelines to reduce waves and prevent flooding. Wetlands Restoration, Ecotone Slope Enhancements, and Stormwater Management would support protecting the neighborhood from flood hazards. Adaption scenarios are conceptual and intended for community discussion purposes only.



Ecotone levee at Sears Point, Sonoma. Source: USACE, Julian Meisler-Sonoma Land Trust

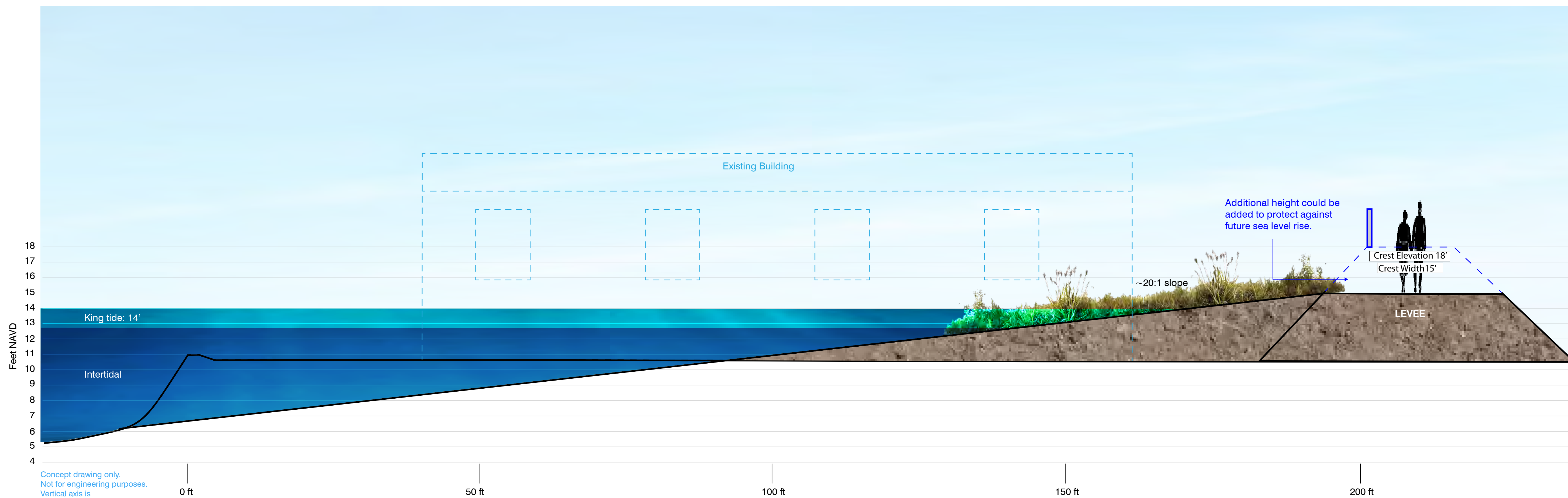


Oro Loma Ecotone (Horizontal) Levee. Source: Oro Loma Sanitary District



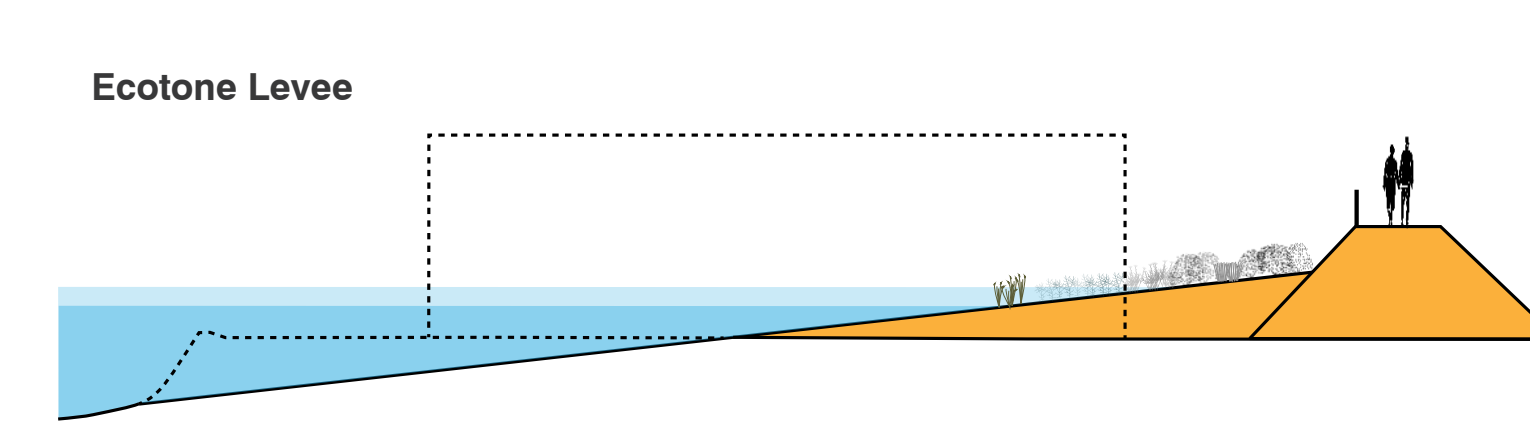
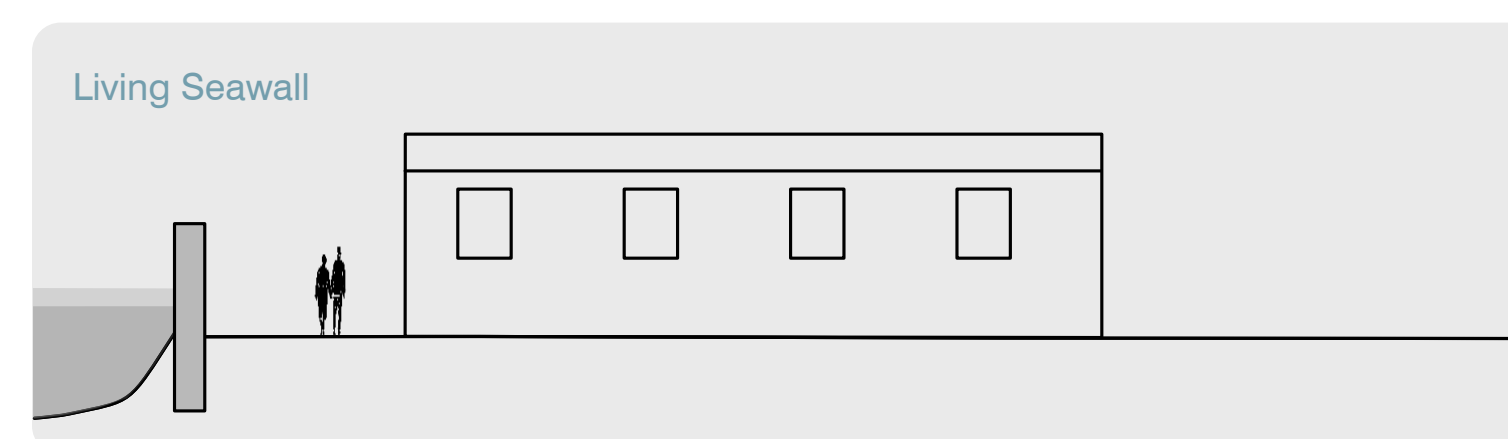
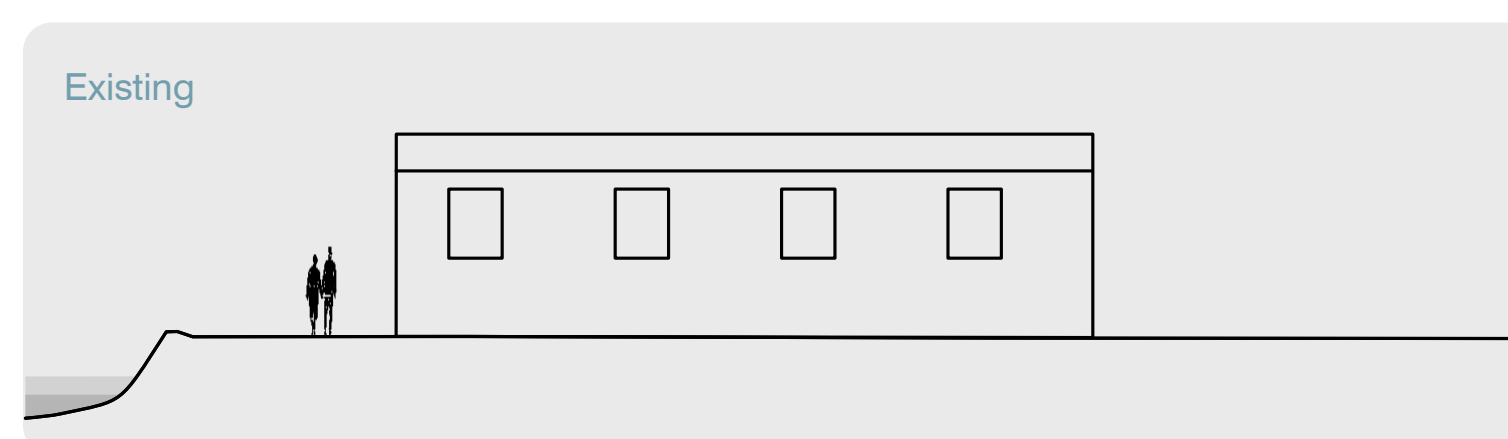
POTENTIAL LOCATIONS

What do you think?



Concept drawing only.  
Not for engineering purposes.  
Vertical axis is  
exaggerated ~2.5x.  
King tide = 1-year extreme tide

## Comparison of Existing Conditions and Scenario Options



The Yosemite Slough Neighborhood Adaptation Plan (YSNAP) process is sponsored by the City and funded by the Governor's Office of Land Use and Climate Innovation. Adaptation scenarios are conceptual only and do not represent an adopted plan. They are used to determine community priorities and inform strategies that address sea level rise expected by 2050 and 2100. California State Parks owns the immediate shoreline; any planning will be coordinated with State Parks.



San Francisco  
Planning

SFEI  
SAN FRANCISCO ESTUARY INSTITUTE

En2action  
engage · empower · act



CA Governor's Office of  
Land Use and  
Climate Innovation



[sfplanning.org/ysnap](https://sfplanning.org/ysnap)





# What matters most to you?



## Would you prefer a scenario that...

is **simple and straightforward**  
(less change, faster, and  
cheaper to implement)

or **is more complex and  
transformational** (requires more  
time, construction-related disruptions,  
harder to fund)?

Place a dot on the  
scale bars below.



**maintains the existing shoreline  
for business activities** (less open  
space, less habitat, cheaper)

or **improves water quality and  
wildlife habitat** (industry retreats  
from shoreline, may require land  
acquisition)?



**maintains current access  
points and roadways** (fewer  
changes, less maintenance)

or **creates access points, biking, and  
walking trails** (more debris cleanup,  
planting maintenance)?



**maintains existing land uses**  
(no changes to current business  
activities)

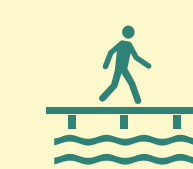
or **creates more open space**  
(requires moving business activities  
and/or land acquisitions)?



## What features matter most?

When planning for sea level rise, what matters most to you? Place a dot in  
up to 3 boxes to show which features are most important.

Place a dot in up to 3 boxes to show  
which features are most important.



**Building dedicated  
access points to the  
water**



**Maintain current  
business activity**



**Improving shoreline  
habitat**



**Being adaptable to  
future coastal flood  
projections**



**Cleaning  
contaminated areas**



**Minimizes operations  
and maintenance  
costs**



**Minimizing costs  
for design and  
construction**



**Minimizing  
construction impacts**



**Other: \_\_\_\_\_**



San Francisco  
**Planning**

**SFEI**  
SAN FRANCISCO ESTUARY FEDERATION

**En2action**  
engage · empower · act



CA Governor's Office of  
Land Use and  
Climate Innovation



[sfplanning.org/ysnap](https://sfplanning.org/ysnap)

