



Everyone should receive a **name tag, comment card, and raffle number** at the registration desk.

Help yourself to **dinner & drink!**

Check out the **browse boards!**

We'll begin at **5:50pm.**



**Public Workshop #3**  
**16 September 2025**



**San Francisco**  
**Planning**

**En2action**  
engage · empower · act

**SFEI**  
SAN FRANCISCO ESTUARY INSTITUTE



Grant funded  
by:



CA Governor's Office of  
**Land Use and**  
**Climate Innovation**



An aerial photograph of an industrial area. In the upper left, there are several large industrial buildings and parking lots filled with vehicles. A large, dark body of water, possibly a reservoir or a large pond, occupies the center of the image. To the right of the water, there is a construction site with dirt mounds, some equipment, and a few small buildings. The background shows more industrial structures and a city skyline in the distance.

## AGENDA

- 1 Welcome
- 2 Project Overview
- 3 Small Group Discussion [ACTIVITY]
- 4 Big Group Report Back [ACTIVITY]
- 5 Wrap Up



San Francisco  
**Planning**

# Tonight's Goals



**Share what we've heard from past outreach & what we've learned through technical analysis**



**Hear your feedback on two possible adaptation scenarios (elements, preferences, & priorities)**



**Discuss the project's next steps (advanced planning, securing funding, further outreach)**

# Comment Card



- If you have a question or comment, please wait until the group activity or after the workshop.
- **Write your question or thought on a comment card and submit it to the project team.**
- You can let us know if you want direct follow up.



# 2

## PROJECT OVERVIEW





# Yosemite Slough Neighborhood Adaptation Strategy



- Yosemite Slough Project Area
- Hunters Point Shipyard
- Candlestick Point State Recreation Area (SRA)
- Parks, Open Space
- Muni Transit Line and Station
- Caltrain Rail Line and Station



YOSEMITE SLOUGH  
Neighborhood Project Area

Hunters Point Shipyard

Candlestick Point SRA



0.25 Miles

0.5



# 6.6 Feet of Sea Level Rise – Exposed Assets





# Sea Level Rise Flooding



Heron's Head



Heron's Head



Illinois Street

California King Tides Project

# Project Area



Yosemite Slough – March and August 2025



# Project Area



Armstrong Ave – August 2025

# Project Area



Yosemite Ave – August 2025



# Project Timeline



Winter  
2024



Winter  
2025

Spring  
2025

Summer  
2025

Fall  
2025

## Community Engagement

- Website & Newsletter
- Community Ambassadors
- Video Campaign
- Walking Tours
- Community Events
- Citizen Advisory Committee
- Meetings
- Public Workshops
- Focus Groups

## Technical Analysis

- Existing Conditions
- Vulnerabilities & Consequences
- Goals and Objectives
- Coastal Flood Hazards Database
- Assets & Systems
- Strategy Evaluation
- Evaluate Scenarios

## Strategy Development

- Community Priorities

**Completed Tasks**  
**Ongoing Tasks**

# SINCE THE LAST WORKSHOP





# Public Workshop on November 13<sup>th</sup>, 2024



# Public Workshop on May 13<sup>th</sup>, 2025



# What Have We Heard?



## COMMUNITY SUPPORT

- 1 Nature-based adaptation measures
- 2 Protecting against both coastal and stormwater flooding
- 3 Easy to maintain and adapt over time
- 4 Improving public health

## OTHER FEEDBACK

- 5 Interagency coordination
- 6 Opportunities for local jobs
- 7 More info to address environmental pollution and contamination
- 8 Mixed support & concern for increasing access to the water



# TECHNICAL RESULTS





# Yosemite Slough Neighborhood Adaptation Strategy



- Yosemite Slough Project Area
- Hunters Point Shipyard
- Candlestick Point State Recreation Area (SRA)
- Parks, Open Space
- Muni Transit Line and Station
- Caltrain Rail Line and Station



Neighborhood

Head of Slough

North Shoreline

South Shoreline

YOSEMITE SLOUGH  
Neighborhood Project Area

Candlestick Point SRA

Hunters Point Shipyard

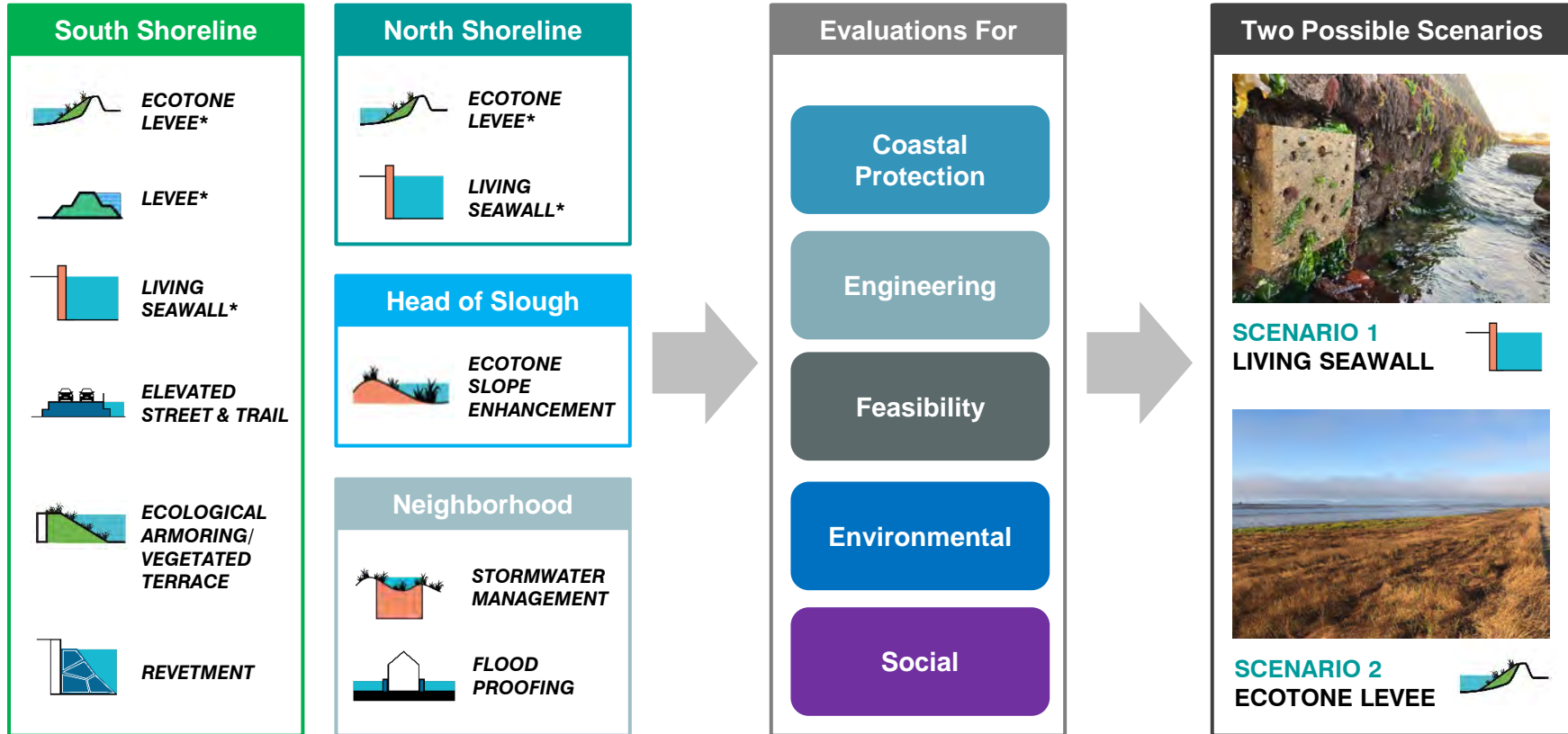


0.25 Miles

0.5 Miles



# Developing Measures Into Scenarios



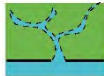


# Both Scenarios Include:



## South Shoreline

### Wetlands Restoration



Wetlands Restoration on North Shoreline  
Source: State Parks

## Head of Slough

### Ecotone Slope Enhancement



Ecotone Slope  
Source: Elkhorn Slough Ecological Reserve

## Neighborhood

### Stormwater Management



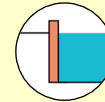
Rain Garden  
Source: SFPUC

*The Yosemite Slough Neighborhood Adaptation Plan (YSNAP) process is sponsored by the City and funded by the Governor's Office of Land Use and Climate Innovation. Adaptation scenarios are conceptual only and do not represent an adopted plan. They are used to determine community priorities and to inform strategies that address sea level rise expected by 2050 and 2100. California State Parks owns the immediate shoreline; any planning will be coordinated with State Parks.*

# Scenario 1: Living Seawall

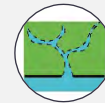


\* per Candlestick Point State Recreation Area General Plan

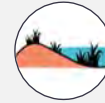


**Living Seawall** along south shoreline and northwest shoreline

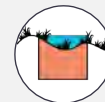
**A coastal defense wall with textured and natural materials to promote biodiversity**



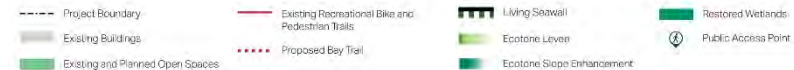
**Wetlands Restoration** in the south shoreline



**Ecotone Slope Enhancement** at the head of the slough



**Stormwater Management** in the neighborhood



*The Yosemite Slough Neighborhood Adaptation Plan is sponsored by the City and will be coordinated with State Parks and other stakeholders. Scenarios are conceptual and for discussion purposes only.*



# Scenario 1: Living Seawall



## Pros & Cons

- Wall height may limit views of water from adjacent properties
- Somewhat adaptable for higher sea level rise scenarios
- Complementary to State Parks planning
- More affordable scenario

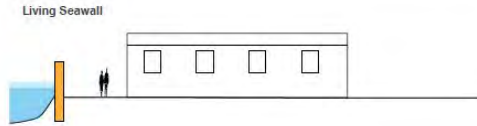
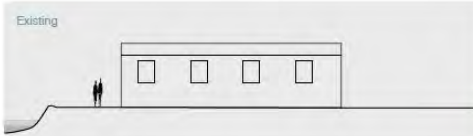
Living Seawall in San Francisco  
Source: Smithsonian Environmental Research Center



# Scenario 1: Living Seawall



## Comparison of Existing Conditions and Scenario Options



The Yosemite Slough Neighborhood Adaptation Plan is sponsored by the City and will be coordinated with State Parks and other stakeholders. Scenarios are conceptual and for discussion purposes only.

# Scenario 2: Ecotone Levee

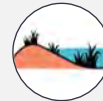


**Ecotone Levee** along south shoreline and northwest shoreline

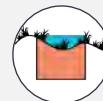
**A sloped area with vegetation that transitions between the Bay and inland areas, backed by a hardened flood control feature**



**Wetlands Restoration** in the south shoreline



**Ecotone Slope Enhancement** at the head of the slough



**Stormwater Management** in the neighborhood



*The Yosemite Slough Neighborhood Adaptation Plan is sponsored by the City and will be coordinated with State Parks and other stakeholders. Scenarios are conceptual and for discussion purposes only.*

# Scenario 2: Ecotone Levee



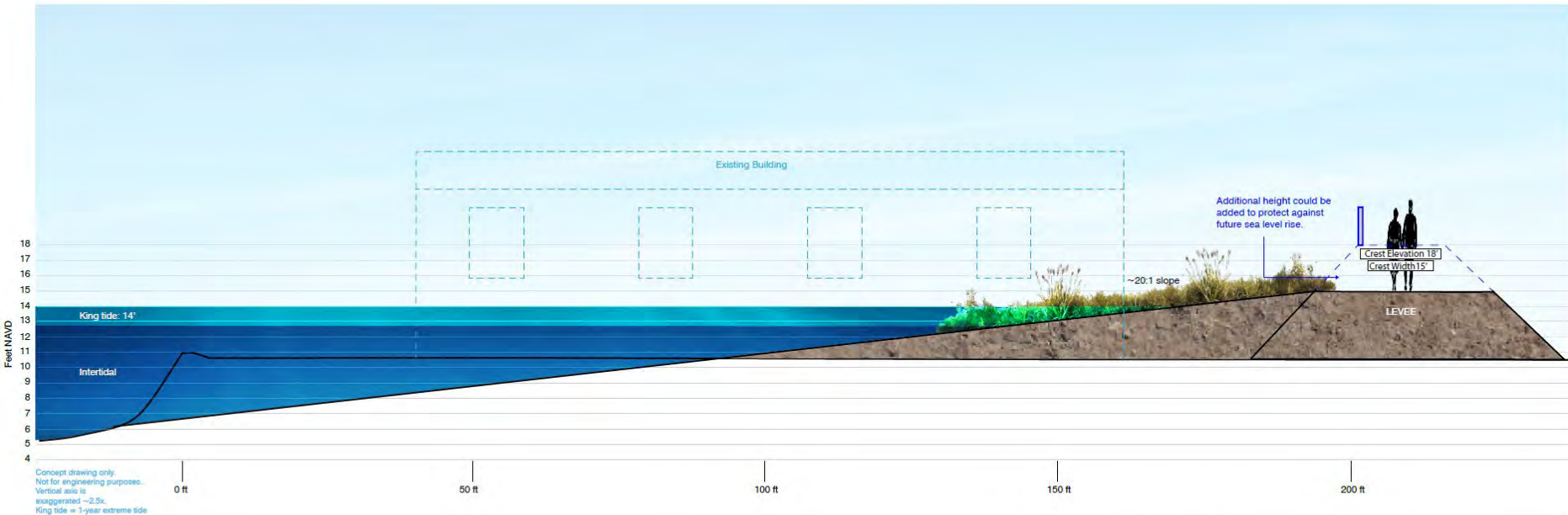
## Pros & Cons

- Requires more space, may require purchasing property in the long term
- Higher costs to remediate soil and create slope than seawall
- Improved connectivity with the Bay Trail
- Improves water quality
- Creates continuous band of wetlands and wildlife habitat around Yosemite Slough

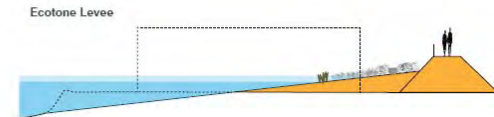
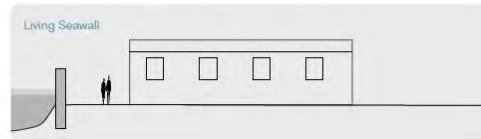
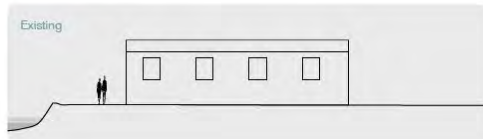




# Scenario 2: Ecotone Levee



## Comparison of Existing Conditions and Scenario Options



The Yosemite Slough Neighborhood Adaptation Plan is sponsored by the City and will be coordinated with State Parks and other stakeholders. Scenarios are conceptual and for discussion purposes only.

# Side-by-Side

--- Project Boundary  
 Existing Buildings  
 Existing and Planned Open Spaces

Existing Recreational Bike and Pedestrian Trails  
 Proposed Bay Trail

Living Seawall  
 Ecotone Levee  
 Ecotone Slope Enhancement

Restored Wetlands  
 Public Access Point



**SCENARIO 1: LIVING SEAWALL**



**SCENARIO 2: ECOTONE LEVEE**

The Yosemite Slough Neighborhood Adaptation Plan (YSNAP) process is sponsored by the City and funded by the Governor's Office of Land Use and Climate Innovation. Adaptation scenarios are conceptual only and do not represent an adopted plan. They are used to determine community priorities and to inform strategies that address sea level rise expected by 2050 and 2100. California State Parks owns the immediate shoreline; any planning will be coordinated with State Parks.

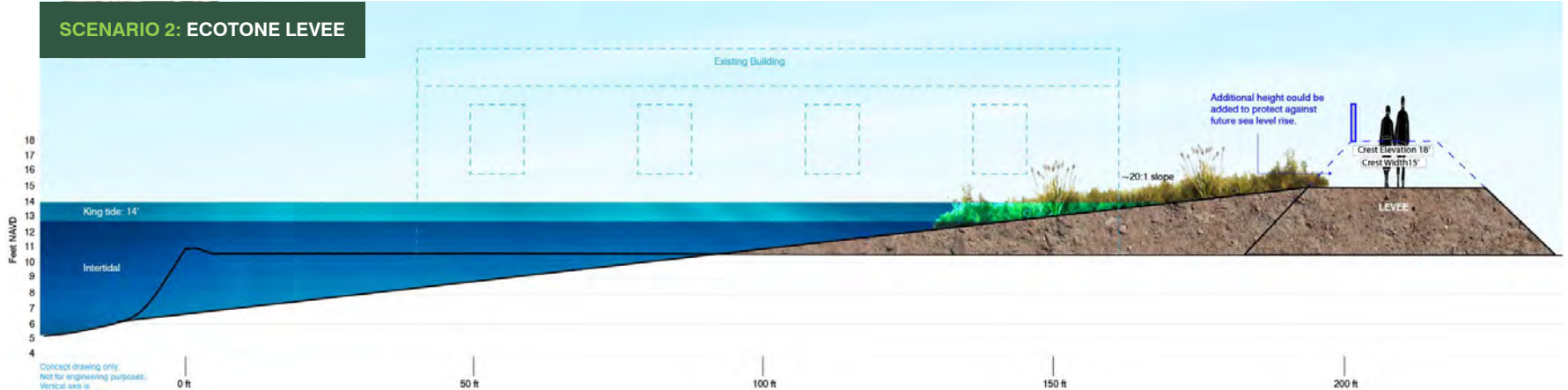
# Side-by-Side



## SCENARIO 1: LIVING SEAWALL



## SCENARIO 2: ECOTONE LEVEE



Concept drawing only.  
Not for engineering purposes.  
Vertical axis is  
magnified ~2 ft  
King tide = 1-year extreme tide

The Yosemite Slough Adaptation is sponsored by the City and will be coordinated with State Parks and other stakeholders. Scenarios are conceptual and for discussion purposes only.



3

# SMALL GROUP DISCUSSION



# Discussion Guide



- What **questions** do you have about the *Living Seawall* or *Ecotone Levee* scenario?
- What **elements** do you like the most about the *Living Seawall* or *Ecotone Levee* scenario? What elements do you care less about?
- Can you **imagine yourself visiting** the Yosemite Slough shoreline in either or both scenarios described? Why or why not?
- What **next steps** are most important to you?

# Instructions



- Choose one person for the Big Group Report Out.
- Engage with the boards:
  - What Do You Think? (post it notes)
  - Which Scenario Would You Prefer? (dot stickers)
  - What Are Your Top Features? (dot stickers)
- Share your reasoning & listen to each other! 😊



# Head to your table!



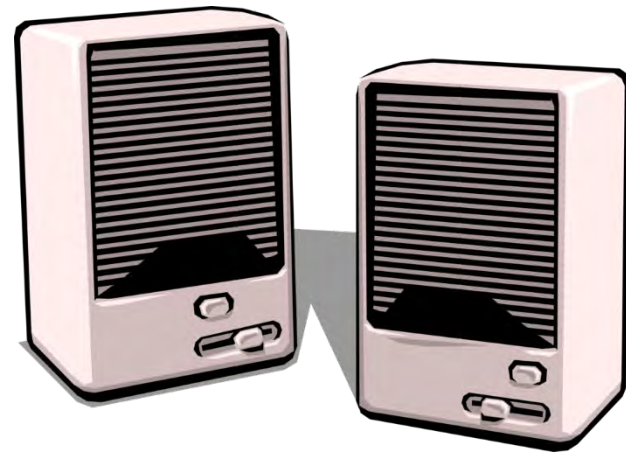
# 4

## BIG GROUP REPORT OUT



# Let's hear from you!

- Please **introduce** yourself
- 1 thing that your group **agreed upon**
- 1 thing that gave your group some **new perspective**





5

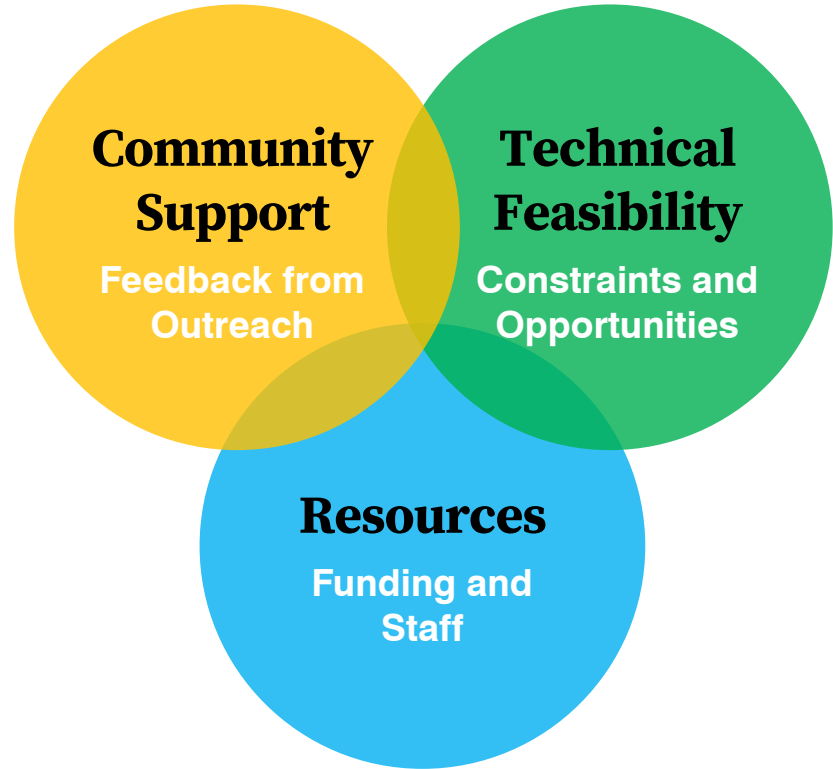
## WRAP UP



# What's Next?

**The plan is to  
protect the people  
who live & work in  
Bayview Hunters  
Point.**

**Climate Adaptation**



**San Francisco Bay  
Shoreline Adaptation  
Plan**

**San Francisco  
Waterfront Flood Study**

**San Francisco  
Coastline Adaptation  
Plan**

**Yosemite Slough  
Neighborhood Adaptation  
Plan**



0 0.5 1 Mile



# Stay In Touch!



**Sign up for our newsletter  
to stay updated!**

**[sfplanning.org/YSNAP](https://sfplanning.org/YSNAP)**



# How was tonight's workshop?



## Please complete an evaluation form on your way out.

## Thank you!



# THANK YOU FOR JOINING TONIGHT!

**YOSEMITE  
SLOUGH**

*Neighborhood Adaptation  
Plan*

Danielle Ngo, Project Manager  
[danielle.ngo@sfgov.org](mailto:danielle.ngo@sfgov.org)

Project website:  
[www.sfplanning.org/ysnap](http://www.sfplanning.org/ysnap)



**San Francisco  
Planning**



