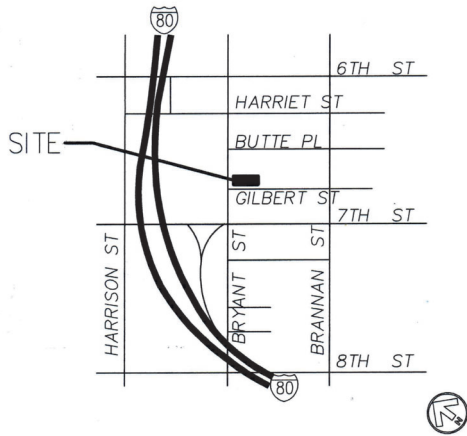
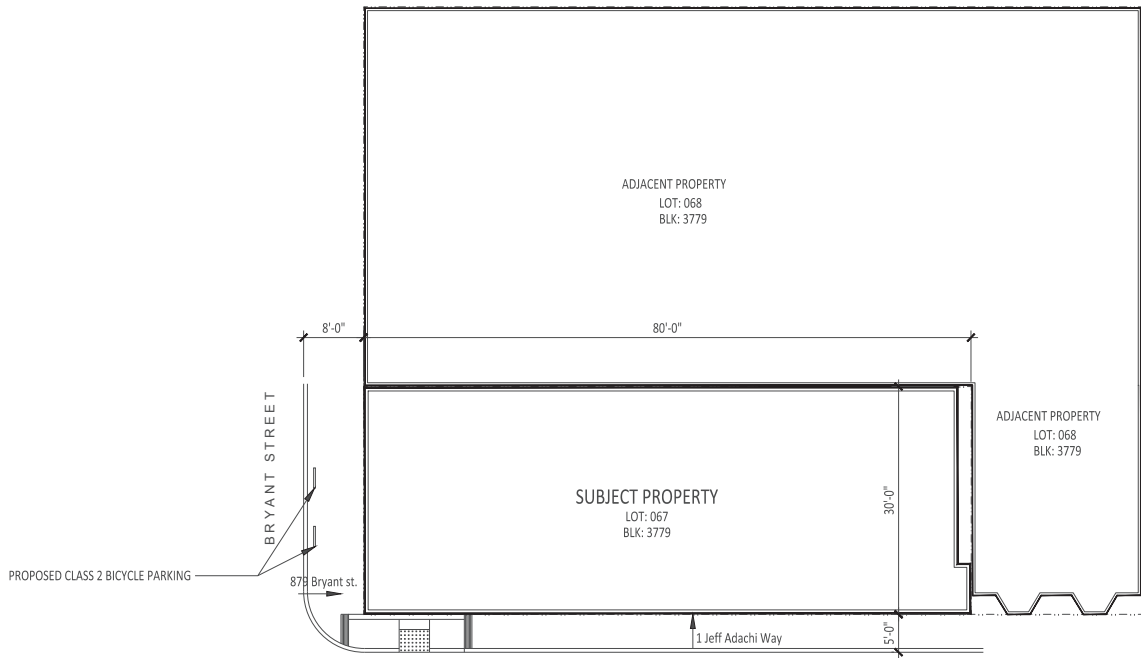


NOTICE: As an instrument of service, the drawings to the property of the Architect may be used only for this Project. Modification to this drawing may be made only by the Architect.

copyright © 2020 Peter Petrucci



1 LOCATION MAP  
N.T.S.



2 SITE PLAN  
1"=10'



## Job Information

Job: 877 Bryant St.  
Site: 879 Bryant St.  
Lot Size: 2,395 Sq. Ft.  
Zoning: SALI  
Code: 2019 California Building Code  
2019 California Electrical Code  
2019 California Mechanical Code  
2019 California Plumbing Code  
2019 California Green Building Code  
2019 California Fire Code  
Local City Building Code and Amendments  
Occupancy: B, F1 NON-VOLTALE ,  
Const. Type: V-B  
Historic Rating: C  
Lot: 067  
Block: 3779

## Sheet Index

- A0.0 Cover Sheet
- A0.1 Existing & Proposed Floor Plans
- A0.2 Existing & Proposed Elevations
- A2.0 Millwork, Equipment

## Project Description

**LAND USE CHANGE**  
Request for Change in Use from Non-Retail Professional Services and Restaurant to Cannabis Micro-business including Retail Dispensary and Delivery; Distribution, and Non-Volatile manufacturing. Permit application under way with San Francisco Office of Cannabis and California State.  
No change in building square footage

## Planning Information

879 Bryant Street  
San Francisco , California 94103

Combined Square Footage of Cannabis Use is 5,781 sq.ft.

Narrative Description of Use: Cannabis Micro-business.

Floor Levels for Use: Basement, First & Second floor ONLY  
Previous use of tenant space: Restaurant and Bail Bonds

Is site vacant: Yes

If vacant, how long: 1/31/20

San Francisco Activity Types

retailer (medical and adult use), manufacturer (nonvolatile), distributor

State of California Activity Types

Storefront Retailer: Type 10, Distribution: Type 11, Manufacturer 1: Type 6



Peter Petrucci  
A.I.A. N.C.A.R.B.  
1165 Francisco No. 7  
San Francisco, Calif.  
415 - 674 - 8039



## REVISION

Bryant & Gilbert LLC  
1 Jeff Adachi Way/879 Bryant Street  
San Francisco, Calif.

## FOR SFDBI USE ONLY

## DESCRIPTION:

Cover

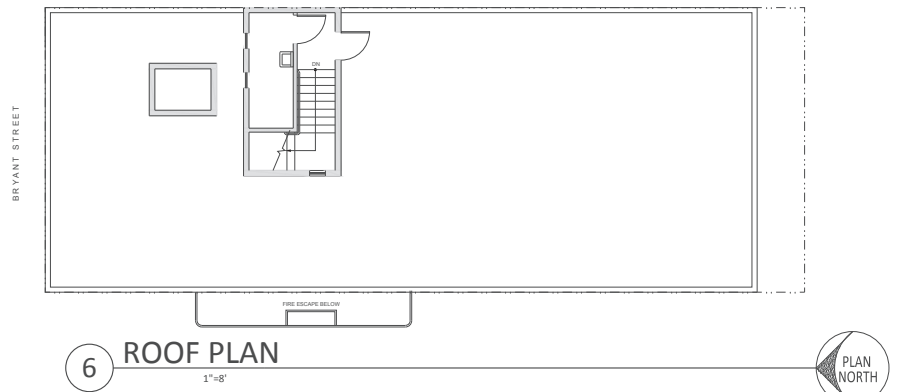
JOB NUMBER: 21-042  
DRAWN BY: PP  
SCALE: -

A0.0

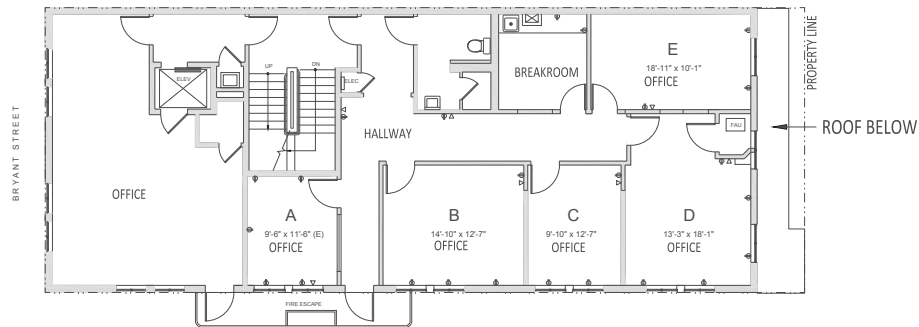
DATE: 4.19.21

NOTICE: As an instrument of service, the drawings to the property of the architect and may be used only for this project. Modification to this drawing may be made only by the architect.

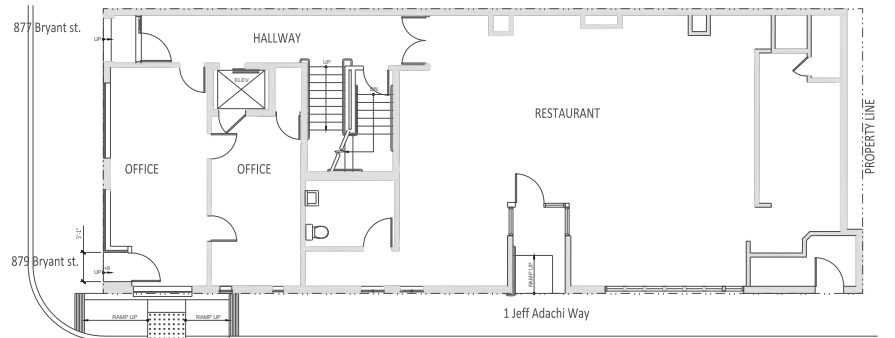
Copyright © 2020 Peter Petrucci



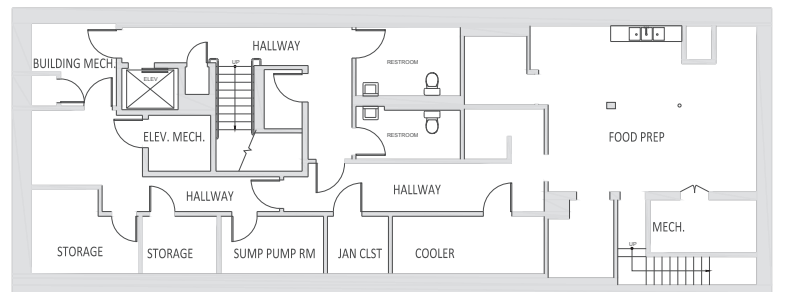
6 ROOF PLAN



5 EXISTING 2ND FLOOR PLAN/3RD FLR SIM.



4 EXISTING FIRST FLOOR PLAN



3 EXISTING BASEMENT PLAN

#### EQUIPMENT LEGEND

- (A) MERCHANDISING REFRIGERATOR
- (B) COUNTER AND DISPLAY
- (C) EDIBLE MANUFACTURING MACHINE
- (D) MULTI-POINT LOCK SECURED STEEL DOOR - KEY OR ELECTRONIC ACCESS RELEASE ACTIVATION ( DETAIL G/A2.0)

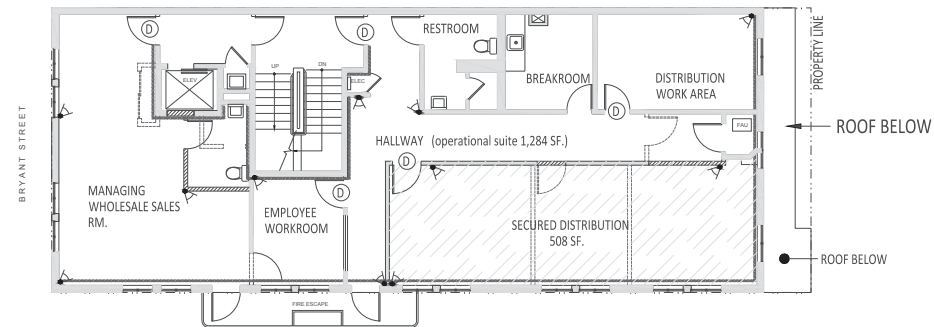
➤ SECURITY CAMERAS (EXTERIOR CAMERAS ATTACHMENT THROUGH WALL)

SEE SHEET A2.0 FOR EQUIPMENT SPECIFICATION

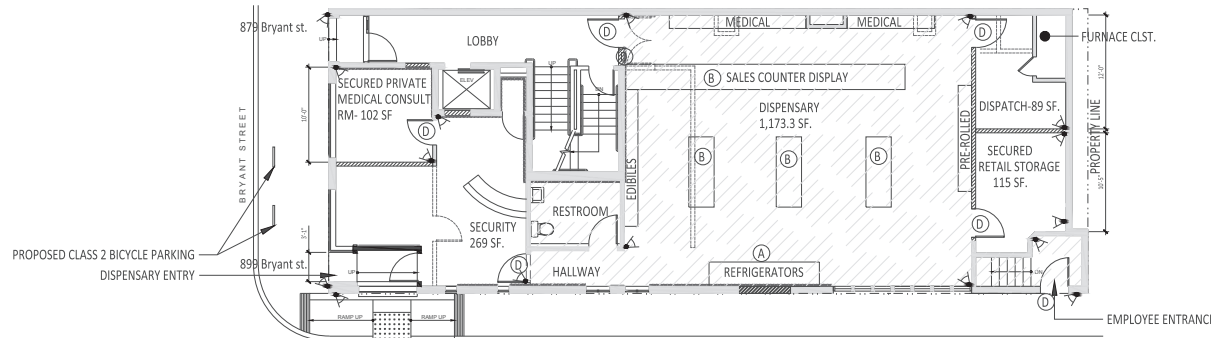
#### WALL LEGEND

- NEW 2X6 WD STUD WALL WITH 5/8" GYP BD. EA. SIDE SOUND BATT INSUL.
- NEW BM 75 (EXPANDED METAL LATH) LINED WALL
- WALLS FOR DEMOLITION
- EXISTING WALLS TO REMAIN

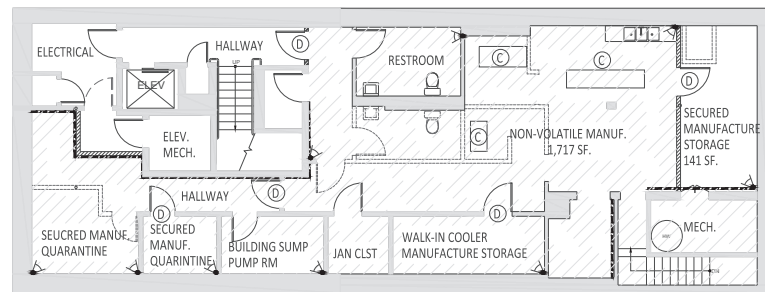
NO WORK/NO CHANGE OF USE ON 3RD FLOOR OR ROOF



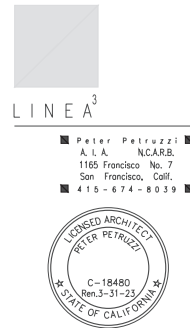
5 PROPOSED 2ND FLOOR PLAN



4 PROPOSED FIRST FLOOR PLAN



3 PROPOSED BASEMENT PLAN



Bryant & Gilbert LLC  
1 Jeff Adachi Way/879 Bryant Street  
San Francisco, Calif.

FOR SFDBI USE ONLY

DESCRIPTION:

Proposed  
Plans

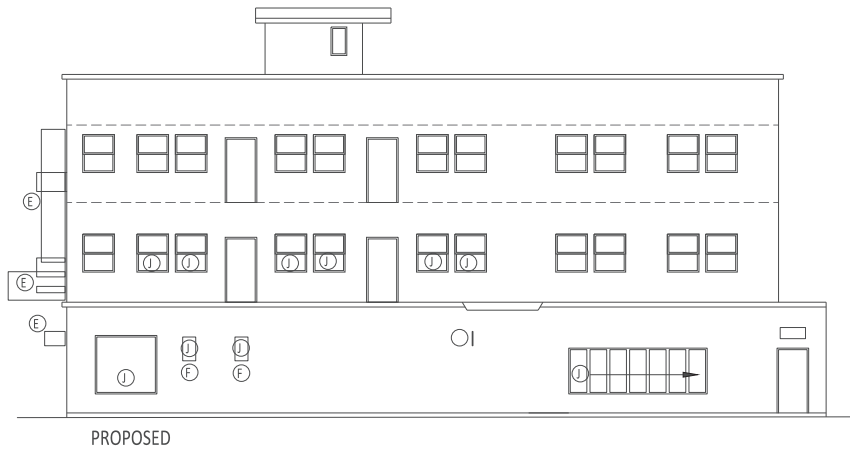
JOB NUMBER: 21-042  
DRAWN BY: PP  
SCALE: -

A0.1

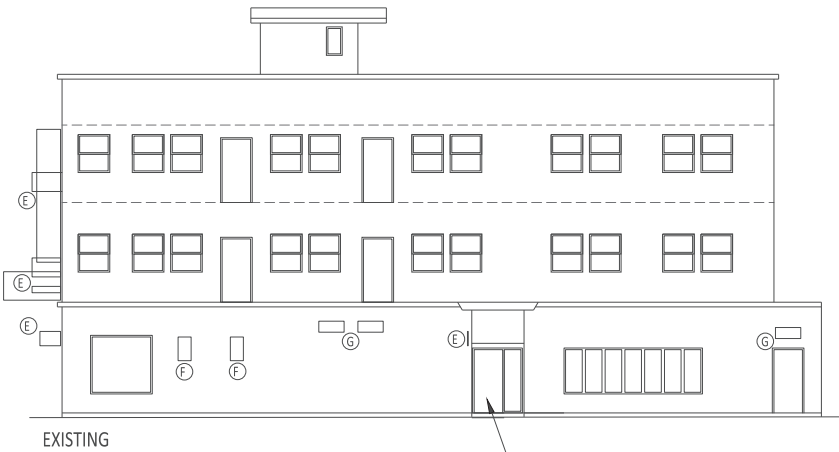
DATE: 4.19.21

NOTICE: As an instrument of service, the drawings to the property of the Architect and may be used only for this Project. Modification to this drawing may be made only by the Architect.

copyright © 2020 Peter Petrucci



PROPOSED



EXISTING

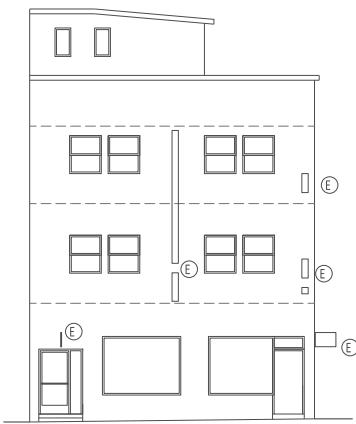
## 2 WEST ELEVATION

1"=8'

ALL GROUND FLOOR GLAZING SHALL BE MAINTAINED TRANSPARENT- NO FROSTING OR TINTING



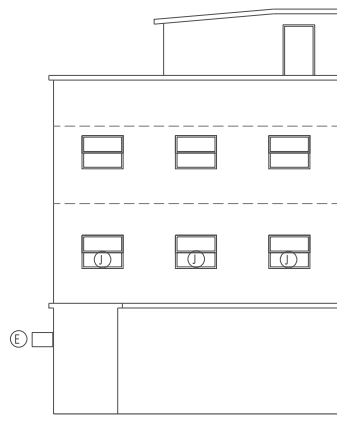
PROPOSED



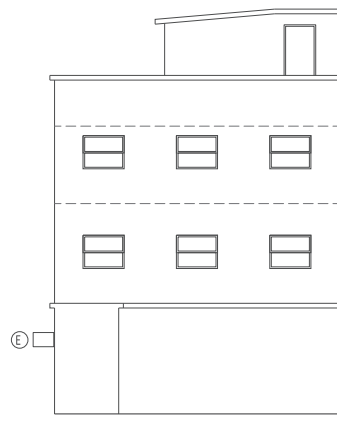
EXISTING

## 1 NORTH ELEVATION

1"=8'



PROPOSED



EXISTING

## 4 SOUTH ELEVATION

1"=8'

### ELEVATION LEGEND

- (E) EXISTING ILLUMINATED FLAG SIGNS TO REMAIN
- (F) EXISTING JALOUSIE WINDOWS
- (G) EXISTING VENT LOUVERS
- (H) RENOVATE ENTRY FOR ADA COMPLIANCE, VERTICAL PUSH BAR LOCATED INSIDE ENTRY ALCOVE- NOT ON FACE OF BUILDING. SEE DETAIL F/A2.0 FOR ATTACHMENT
- (I) INSTALL SECURITY GATES ON INSIDE OF EXISTING WINDOWS F



REVISION

Bryant & Gilbert LLC  
1 Jeff Adachi Way/879 Bryant Street  
San Francisco, Calif.

FOR SFDBI USE ONLY

DESCRIPTION:  
Elevations

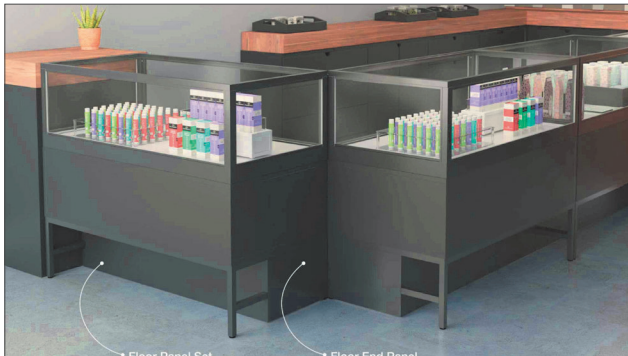
JOB NUMBER: 21-042  
DRAWN BY: PP  
SCALE: -

A0.2

DATE: 4.19.21

EQUIPMENT LEGEND

- (A) MERCHANDISING REFRIGERATOR  
(B) COUNTER AND DISPLAY  
(C) EDIBLE MANUFACTURING MACHINE  
SEE SHEET A2.0 FOR EQUIPMENT SPECIFICATION



DISPLAY COUNTERS

**GDM-37-HC-LD**

- The result of 41 years of manufacturing of glass door merchandisers.
- Factory engineered, self-contained, capillary tube system using environmentally friendly R290 hydrocarbon refrigerant that has zero (0) ozone depletion potential (ODP), 0 global warming potential (GWP).
- Overhead, factory balanced, refrigeration system holds 37°F to 38°F (3°C to 3.3°C).
- Exterior - non-poll or chip black powder coated cold rolled steel, durable and permanent.
- Interior - attractive, NSF approved, white aluminum interior liner with stainless steel floor.
- Self-closing doors. Counter-balanced weight system for smooth, even, positive closing.
- "Low-C" double pane thermal insulated glass door assemblies with internal plastic channel frames. The latest in energy efficient technology.
- LED interior lighting provides more even lighting throughout the cabinet. Safety shutoff.
- Entire cabinet structure is foam-in-place using a high density, polyurethane insulation that has zero ozone depletion potential (ODP) and zero global warming potential (GWP).

Bottom mounted units feature:

- This door's lower shelf to maximize product visibility.
- Storage on top of cabinet.
- Easily accessible condenser coil for cleaning.

**ROUGH-IN DATA**

Chart dimensions rounded up to the nearest "W" (width) and "H" (height) (depth does not include "W" (width) for slide door handles).

Model	Doors	Shelves	Cabinet Dimensions (inches) (mm)			Voltage	Amps	NEMA Config	Cond. Length (ft.) (m)	Crated Weight (lb.) (kg)
			W	D	H					
GDM-37-HC-LD	2	8	43 1/2	29 3/4	78 1/4	115/60/1	6.5	5-15P	10	365
			1105	753	1998	N/A			3.05	180

MERCHANDISING REFRIGERATOR

11/25/2019 Welcome to the MACTEC Packaging Technologies

**MACTEC**  
Packaging Technologies

**Products**



**MT1300H**

- Machine Series: MT1300H
- Machine Length: Approx. 60.00"
- Machine Width: 26"
- Approx. Weight: 845 lbs (Depending on Options)
- Forming Area: 2.37' x 4.37' Max.
- Index: 0.5"
- Wendwidth: 5.20" Max.
- Product Feed Area: 30"
- Forming Depth: 6.00" Max.
- Speed: Variable Up to 40 inches per Minute
- Electrical Requirements: 110-120V
- Air Consumption: 10-12 CFM
- Max. Forming Material OD: 12.00"
- Max. Locking Material OD: 14.00"



**MT1250K**


- Machine Series: MT1250K
- Machine Length: Approx. 56.00"
- Machine Width: 26"
- Approx. Weight: 810 lbs (Depending on Options)
- Forming Area: 2.37' x 4.37' Max.
- Index: 0.5"
- Wendwidth: 5.20" Max.
- Product Feed Area: 30"
- Forming Depth: 6.00" Max.
- Speed: Variable Up to 40 inches per Minute
- Electrical Requirements: 110-120V
- Air Consumption: 10-12 CFM
- Max. Forming Material OD: 12.00"
- Max. Locking Material OD: 14.00"



**MT1250B**

- Machine Series: MT1250B
- Machine Length: Approx. 56.00"
- Machine Width: 26"
- Approx. Weight: 810 lbs (Depending on Options)
- Forming Area: 2.37' x 4.37' Max.
- Index: 0.5"
- Wendwidth: 5.20" Max.
- Product Feed Area: 30"
- Forming Depth: 6.00" Max.
- Speed: Variable Up to 40 inches per Minute
- Electrical Requirements: 110-120V
- Air Consumption: 10-12 CFM
- Max. Forming Material OD: 12.00"
- Max. Locking Material OD: 14.00"


EDIBLE MANUFACTURING



**i-Touch<sup>®</sup> Invisible Hand Fingerprint**

D8 - ZM  
Smart Series

Default Opening mode:  
**fingerprint card Password key**  
Optional:  
Bluetooth unlock  
Wifi Remotely unlock



SECURE DOOR & LOCKING MECHANISM

**INGRESS<sup>®</sup> Mounting Instructions**

**INGRESS<sup>®</sup> is shipped fully assembled!**

- Slide the actuator out from the SWITCH BASE (as packaged) for base mounting.
- This unit is not designed to mount to any junction box. Use the enclosed hardware to mount directly to a vertical surface. Conduit access points (2) in the base are located at typical site conditions for wiring convenience.
- Mark the locations of the ANCHORS or MACHINE SCREWS (for bollard mount). Install the ANCHORS supplied with unit.
- Position the SWITCH BASE to be level and plumb (using 4 ft. level) at the desired location (wall mount). Adjust JACK SCREWS, using large regular screw driver to prevent the base from conforming to irregularities in the wall.
- Wall mount: Install the supplied ANCHOR SCREWS through the JACK SCREW and SWITCH BASE and into the appropriate ANCHORS. Bollard mount: Drill and tap bollard for 1/4"-20 machine screws. Check to make sure the BASE remains level and plumb.
- Wire SWITCH as required.
- Hard-wired:** Using supplied wirenuts, connect the wires from the switch harness to the power source wires. **Wireless:** Using supplied wirenuts, connect the wires from the switch harness to SWTRAN M. The LED light should not face the installer; it has to face the base! This ensures RF transmission. Use Velcro (in transmitter package) to secure SWTRAN M to the upper portion of the INGRESS<sup>®</sup> base as shown.
- Slide the ACTUATOR back into the SWITCH BASE. Compress the SWITCH SPRING as the ACTUATOR passes the SWITCH. The HANGER PINS should rest in the slots at the top of the SWITCH BASE. SEE FIG. 2.
- Position the END CAP onto the top of the SWITCH BASE. Attach with the supplied spanner security screws. SEE FIG. 2.
- SPECIAL TOOL NEEDED: #8 Spanner screwdriver bit**

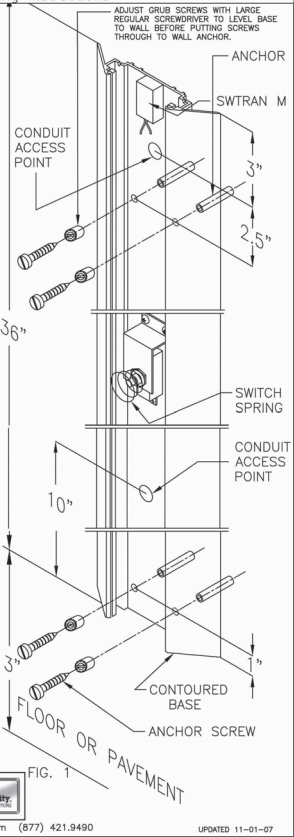
**PARTS BAG:**

- (4) Ribbed drywall anchors
- (4) Lag screw masonry anchors
- (1) 1-1/4" slotted anchor screws
- (4) 1/4"-20 Stainless flathead machine screws
- (2) Wirenuts

**FIG. 2**

**FIG. 1**

Wick Industries, Inc. www.wick.com (877) 421.9490 UPDATED 11-01-07



ATTACHMENT POWER ACTUATOR

**LINEA<sup>3</sup>**

Peter Petrucci  
A.I.A. N.C.A.R.B.  
1165 Francisco No. 7  
San Francisco, Calif.  
415 - 674 - 8039

REGISTERED ARCHITECT  
PETER PETRUCCI  
C-18480  
Ren.3-31-23  
STATE OF CALIFORNIA

REVISION

**Bryant & Gilbert LLC**  
1 Jeff Adachi Way/879 Bryant Street  
San Francisco, Calif.

FOR SFDBI USE ONLY

DESCRIPTION:

Proposed Display

JOB NUMBER: 21-042  
DRAWN BY: PP  
SCALE: -

**A2.0**

DATE: 4.19.21